



# Flat 11 Westcroft 16 West Street

Reigate RH2 9BS

£1,415 PCM

PURE-RESi are delighted to offer this luxury one double bedroom apartment situated on the third floor. Entering the property the hallway leads you through to the spacious open plan living area with light oak effect wood laminate flooring. The kitchen is fitted with white high gloss base and wall units and appliances which include; integrated oven, vitroceramic hob, fridge/freezer, washer/dryer and dishwasher. The double bedroom includes built-in wardrobes and fitted carpets while the luxury bathroom suite is fitted with a monsoon shower over the bath and finished off with Porcelanosa tiling. The property also benefits from triple glazed windows throughout a secure video door entry system and an allocated parking space.

Westcroft is a modern, high specification apartment block in the heart of Reigate. Situated just a short walk from the station the location is perfect, especially if you need to commute by train every day or want to wander in to town to shop or visit the many pubs and restaurants. Step in to a welcoming and modern foyer, the stairs lead you up to these high specification apartments. With luxuriously appointed kitchens and bathrooms these are arguably the finest rental apartments available in the town.

PURE RESi homes are designed & built exclusively for renters. As a tenant of ours you will benefit from the security and peace of mind only a professional landlord can offer. Longer term letting, dedicated management & maintenance teams and access to a Tenants App providing useful documents and feedback features are just some of the benefits of renting from us.

- Luxury Modern Apartment
- Fully Fitted Kitchen With Dishwasher
- Video Entryphone
- Second Floor (No Lift)
- Allocated Underground Car Parking
- Triple Glazed Windows
- Town Centre Location
- Superfast Broadband Available
- Built Exclusively For Renters
- Council Tax Band C

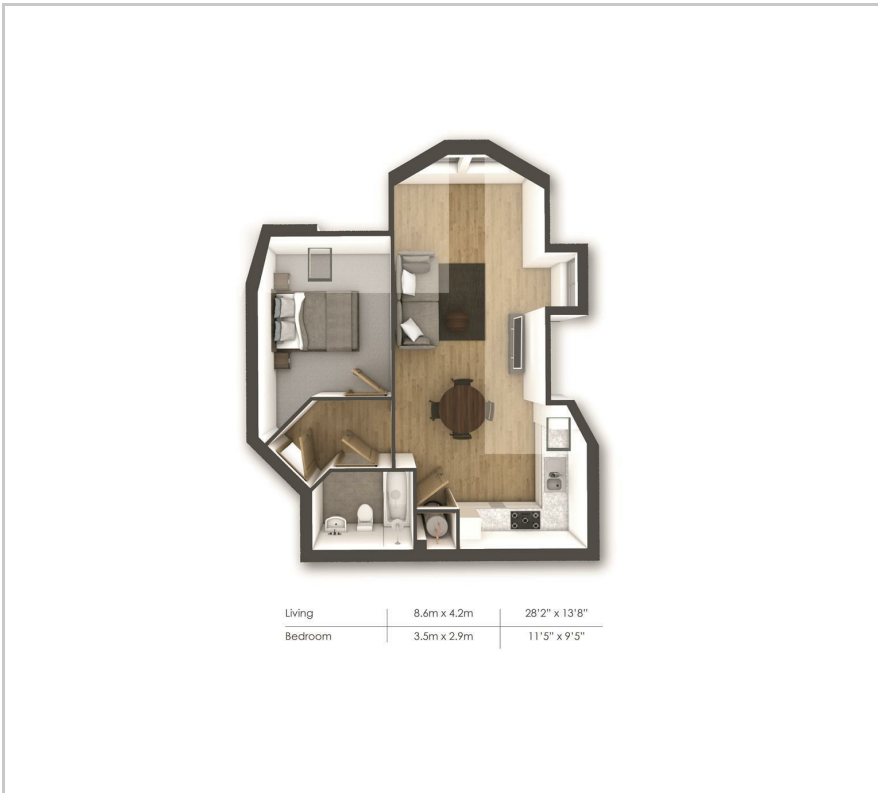
## Viewing

Please contact Pure Resi on 01306 888000 to arrange a viewing appointment for this property or if you require any further information.

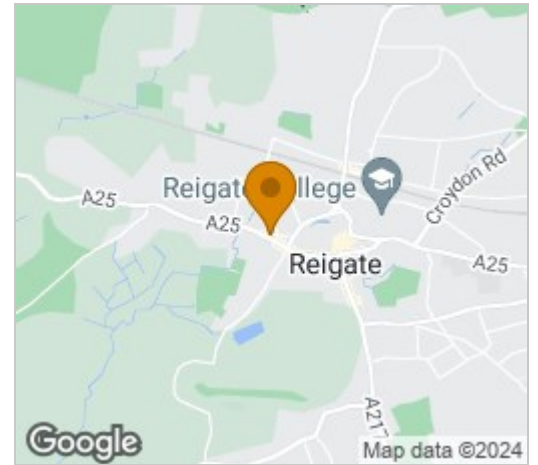




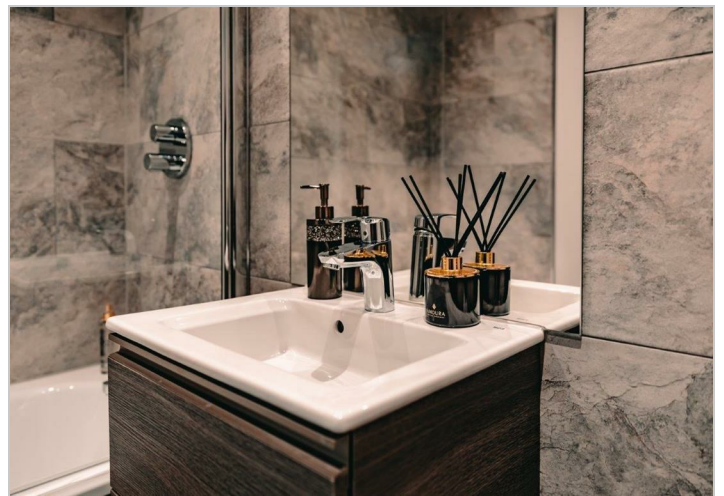
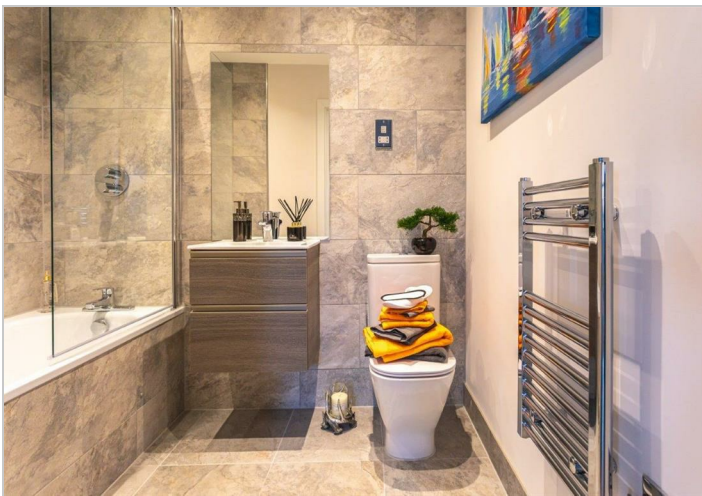
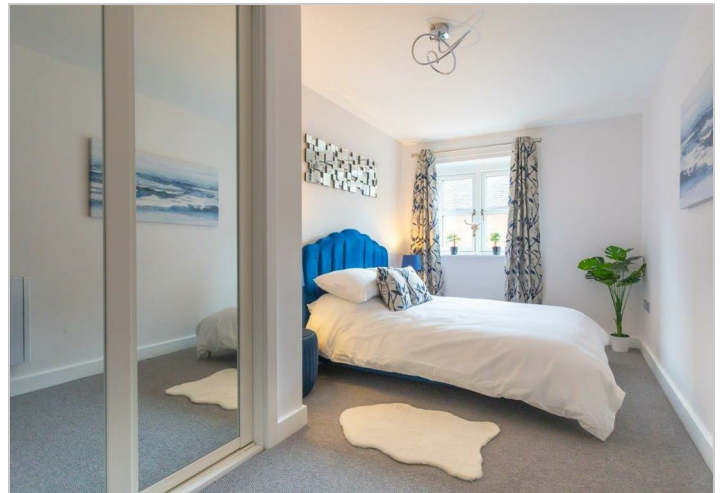
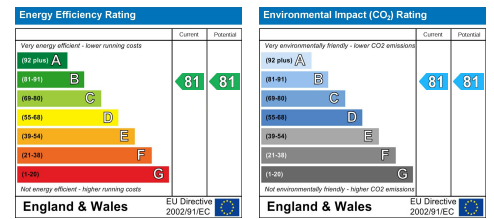
## Floor Plan



## Area Map



## Energy Efficiency Graph



These particulars, whilst believed to be accurate are set out as a general outline only for guidance and do not constitute any part of an offer or contract. Intending purchasers should not rely on them as statements of representation of fact, but must satisfy themselves by inspection or otherwise as to their accuracy. No person in this firm's employment has the authority to make or give any representation or warranty in respect of the property.