



WE WOULD LIKE TO POINT OUT THAT OUR PHOTOGRAPHS ARE TAKEN WITH A DIGITAL CAMERA WITH A WIDE ANGLE LENS. These particulars have been prepared in all good faith to give a fair overall view of the property. If there is any point which is of specific importance to you, please check with us first, particularly if travelling some distance to view the property. We would like to point out that the following items are excluded from the sale of the property: Fitted carpets, curtains and blinds, curtain rods and poles, light fittings, sheds, greenhouses - unless specifically specified in the sales particulars. Nothing in these particulars shall be deemed to be a statement that the property is in good structural condition or otherwise. Services, appliances and equipment referred to in the sales details have not been tested, and no warranty can therefore be given. Purchasers should satisfy themselves on such matters prior to purchase. Any areas, measurements or distances are given as a guide only and are not precise. Room sizes should not be relied upon for carpets and furnishings.

COMPUTER-LINKED OFFICES THROUGHOUT WEST WALES and Associated office in Mayfair, London

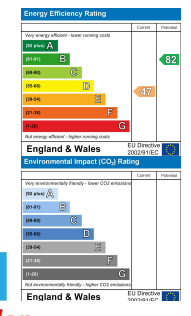


Hyfrydle High Street, Llandysul, SA44 4DN

- For Sale By Auction
- 3 Bedrooms
- Convenient Location
- Ideal Investment / FTB
- Close to Amenities
- Town House
- 3 Storey House
- Character Features
- Electric Heating
- EPC Rating: E

By Auction **£99,000**

COMPUTER-LINKED OFFICES THROUGHOUT WEST WALES and Associated office in Mayfair, London





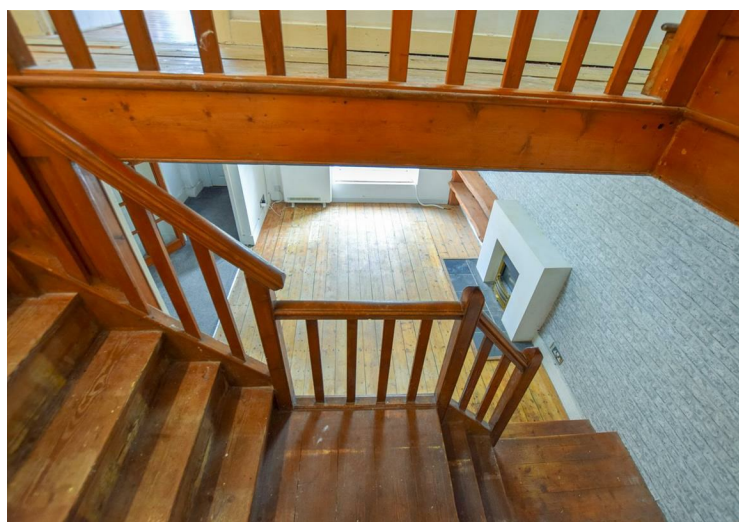
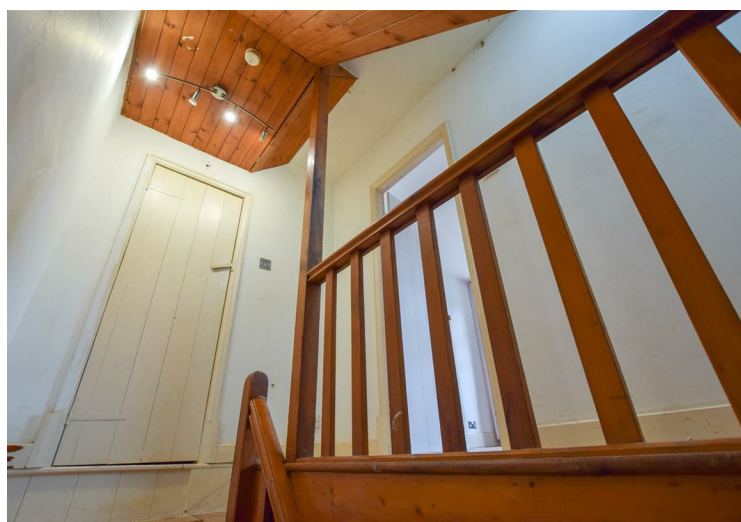
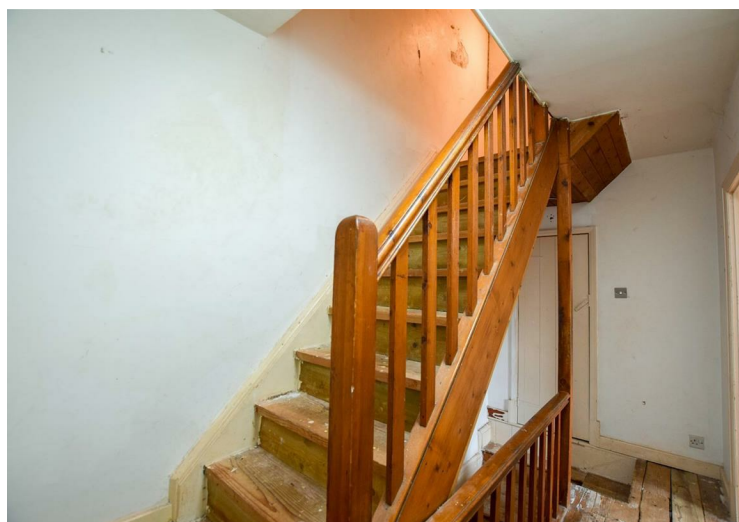
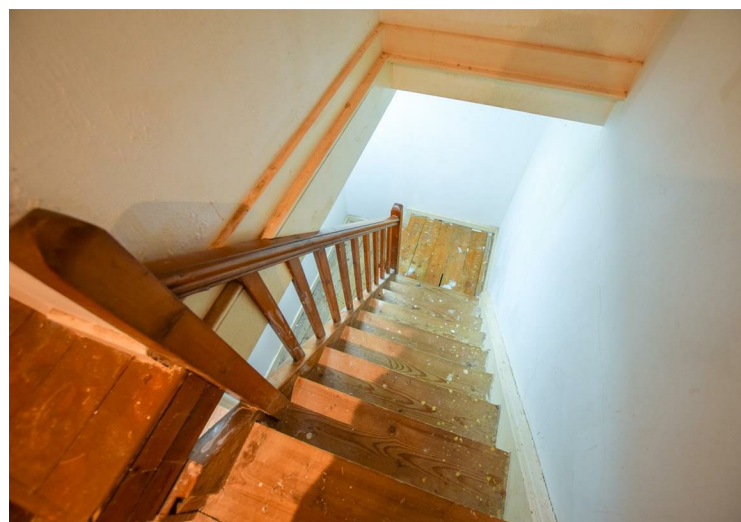
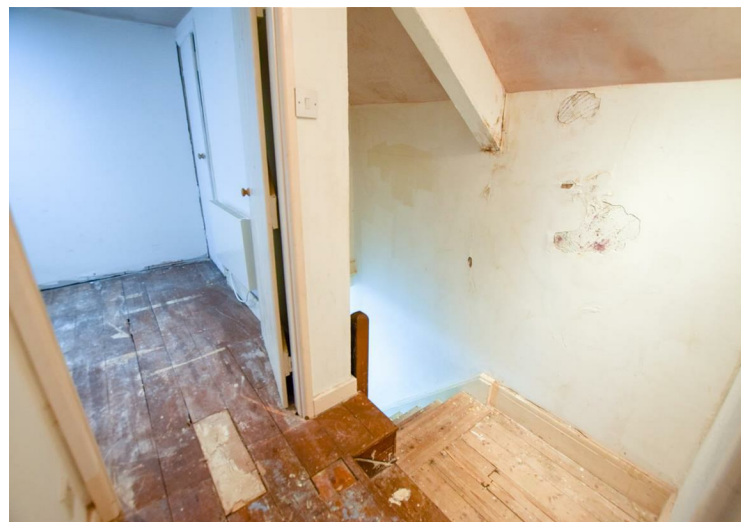
FOR SALE BY AUCTION

A mid-terrace, three-story house in the convenient location of High Street, Llandysul.

The property would make an ideal investment or First-time Buyer property - the layout briefly comprises a front entrance door leading into a reception lobby with a glazed door into the lounge which has a modern coal-effect electric fire, tiled hearth, wood-panelled ceiling, understairs storage cupboard, stairs to split-level landing with doorway to the kitchen, which is fitted with a range of modern base and larder cupboards, granite-effect worktops, stainless steel sink unit, plumbing for washing machine, vent for dryer and plumbing for dishwasher, sunken spotlights. The Family bathroom is also on the ground floor and has a w.c., vanity unit, bath with an electric shower over, and a heated towel rail.

On the first floor, the landing area is equipped with an airing cupboard and a bedroom. The second floor has bedroom 2, with a built-in wardrobe, and bedroom 3 with a window to front, and provides access to the loft.

Llandysul, also spelt Llandyssul, is a small town and community in the county of Ceredigion, Wales. As a community it consists of the townships of Capel Dewi, Horeb, Pontsian, Pren-gwyn, Tregroes, Rhydowen and the town of Llandysul itself. Llandysul lies in south Ceredigion in the valley of the River Teifi and is visited for its fishing and canoeing.



WhatThreeWords Reference: Chip.Blunders.Certainly

See our website www.westwalesproperties.co.uk in our TV channel to view our location videos about the area.