

Castle Street
Nether Stowey
Bridgwater
TA5 1LW



JOSEPH CASSON
the estate agency your home deserves





£210,000

- Link-Detached Period Cottage
 - Two Double Bedrooms
 - One Bathroom
 - Two Reception Rooms
 - Kitchen
 - Courtyard Garden
- Quiet Location Along A Private Drive
 - Desirable Village Setting
 - No Onward Chain

Discover this charming two-bedroom period cottage nestled on a private drive in the sought-after village of Nether Stowey.

Featuring a lovely courtyard garden and no onward chain, this property offers great potential with some modernisation needed.

ACCOMMODATION

This charming cottage is in need of some updates.

The ground floor features an entrance hallway, kitchen, lounge, and dining room. Upstairs are two bedrooms and a bathroom.

Outdoors, you'll find a courtyard garden with vehicle access through double wooden gates and a stone shed.

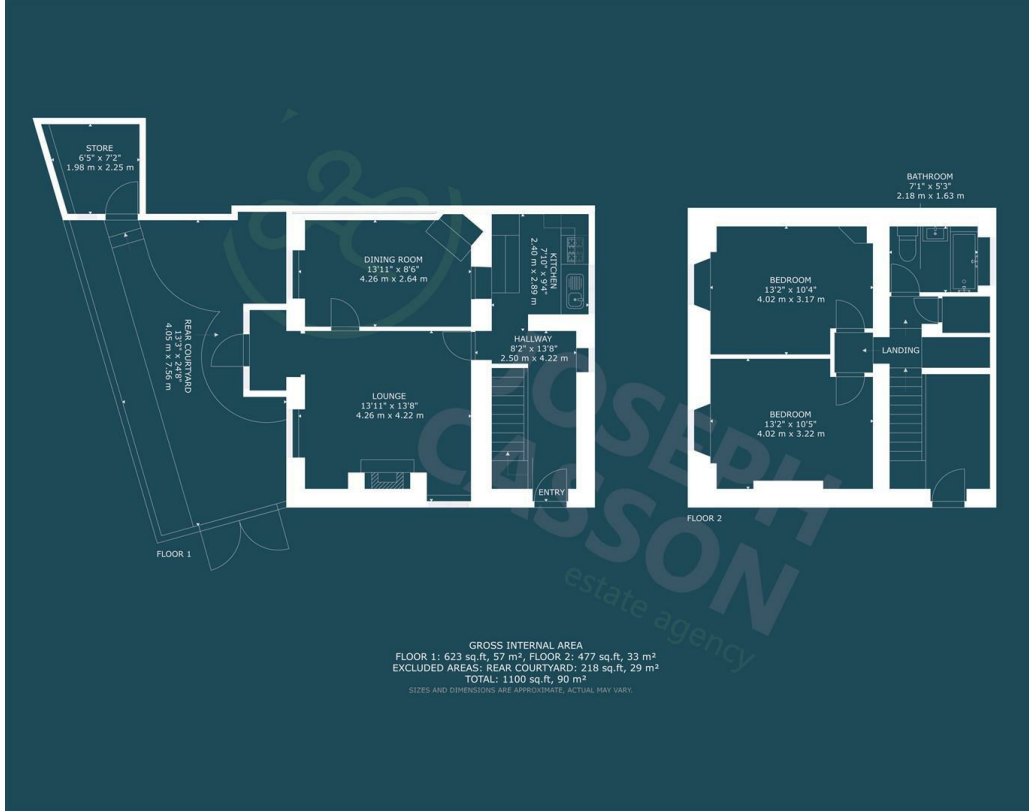
Please note: The owner acknowledges there are damp issues, and we have reflected this in the asking price.

LOCATION

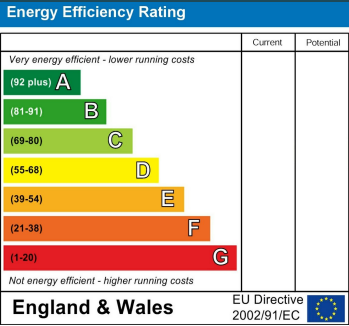
The historic village of Nether Stowey has many facilities, including a library, shop, restaurant, butchers, three public houses and Quantock Medical Centre.

The Quantock Hills offer a wide range woodland and moorland walks. Slightly further away, the bustling market town of Bridgwater offers a wider range of amenities and has excellent transport links to the M5 motorway and mainline rail link.





Council Tax Band
C



Agents Note: Whilst every care has been taken to prepare these particulars, they are for guidance purposes only. All measurements are approximate and are for general guidance purposes only and whilst every care has been taken to ensure their accuracy, they should not be relied upon and potential buyers/tenants are advised to recheck the measurements



Joseph Casson Estate Agency -
Bridgwater
1 Friarn Lawn
Bridgwater
Somerset
TA6 3LL

Contact
01278258005
office@josephcasson.co.uk
www.josephcasson.co.uk



JOSEPH CASSON
the estate agency your home deserves