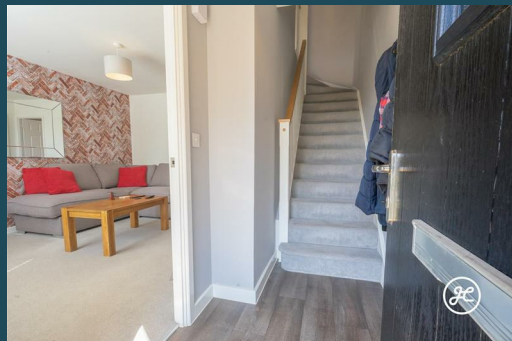


Campion Way
Bridgwater
TA5 2FB




JOSEPH CASSON
the estate agency your home deserves





£264,500

- Modern Semi-Detached Property
- Constructed By Bloor Homes in 2020
 - Three Bedrooms
 - Two Bathrooms
 - Lounge
- Open-Plan Kitchen/Diner
 - Utility & Cloakroom
 - Garage & Driveway
- NHBC Buildmark Warranty
 - EPC Rating: B

Welcome to this stunning modern property nestled in the heart of Wilstock Village. Boasting a picturesque view of the park, a low maintenance and secure rear garden, a convenient garage, and a spacious driveway, this home is a true gem. Located in Bloor Home's newest phase of the highly desirable Wilstock Village development, this property offers the perfect blend of comfort and style. Don't miss out on the opportunity to make this beautiful house your new home.

ACCOMMODATION

This double glazed, gas centrally heated property briefly comprises: an entrance hallway, lounge, a stunning kitchen/dining room with a utility area, and a cloakroom. On the first floor, there are three bedrooms and a contemporary family bathroom. The primary bedroom also features an en-suite shower room and integrated wardrobes.

Outside, there is ample parking on own driveway, a single garage, and an enclosed low-maintenance rear garden with side access.

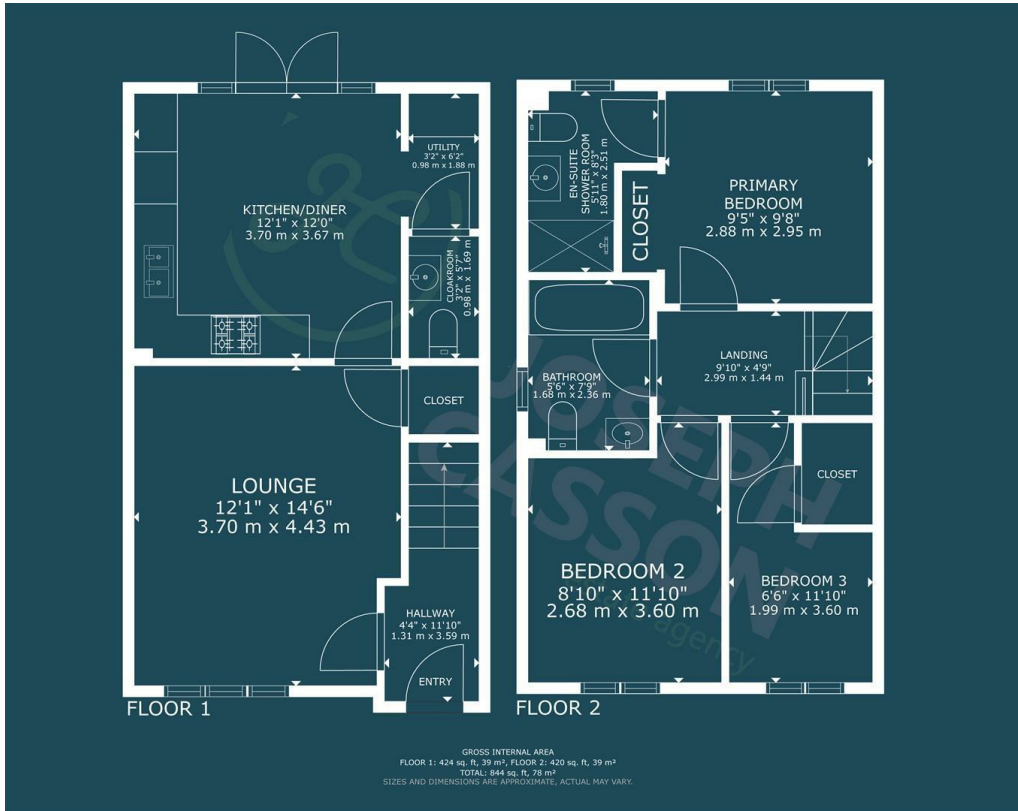
Development management charge: £142.00 per annum.

LOCATION

Wilstock Village is a stunning development of family homes situated at the foot of Quantock Hills that has retained an area of nearby nature walks with excellent transport links to the M5 and A38, and on the edge of the town of North Petherton.

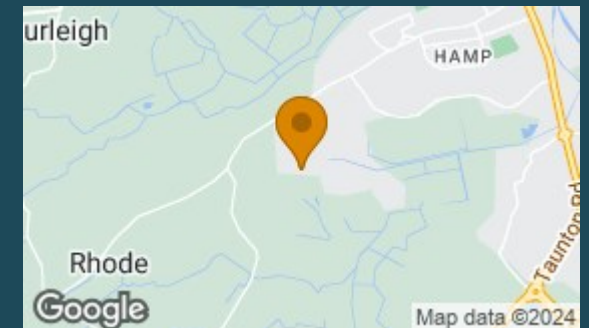
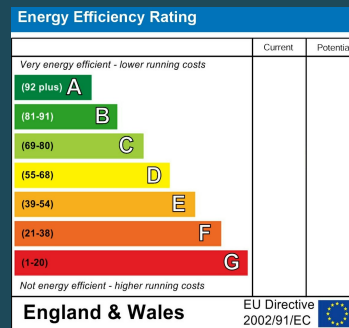
North Petherton offers a range of shops and facilities with the bustling town of Bridgwater just a mile away which is home to an abundance of amenities comprising of a varied mix of local individual shops alongside high street stores.



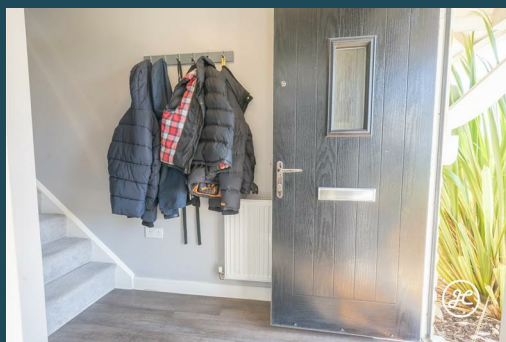


Council Tax Band

C



Agents Note: Whilst every care has been taken to prepare these particulars, they are for guidance purposes only. All measurements are approximate and are for general guidance purposes only and whilst every care has been taken to ensure their accuracy, they should not be relied upon and potential buyers/tenants are advised to recheck the measurements



Joseph Casson Estate Agency -
Bridgwater
1 Friarn Lawn
Bridgwater
Somerset
TA6 3LL

Contact
01278258005
office@josephcasson.co.uk
www.josephcasson.co.uk



JOSEPH CASSON

the estate agency your home deserves