



Meadway, Rustington, BN16 2DD

Freehold

Detached Chalet Bungalow • Three Double Bedrooms • Sought-After Sea Estate • Integral Garage and Driveway • Recently Rendered • Secluded Rear Garden • Less than a Mile to Rustington Beach! • Approx. 1369 sq. ft (127.1 sq. m)

Cooper Adams

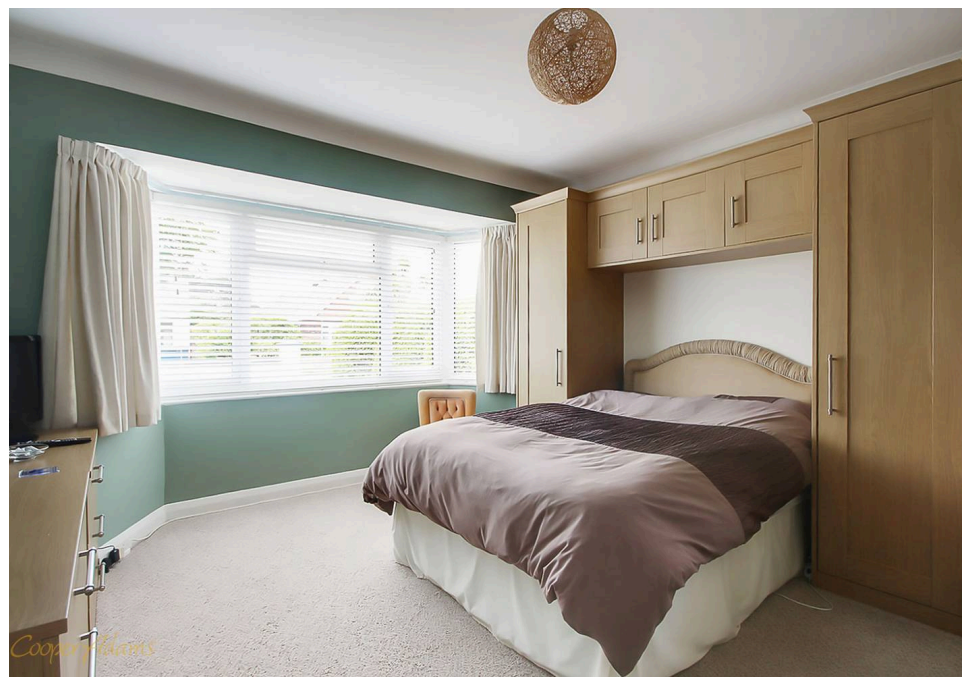
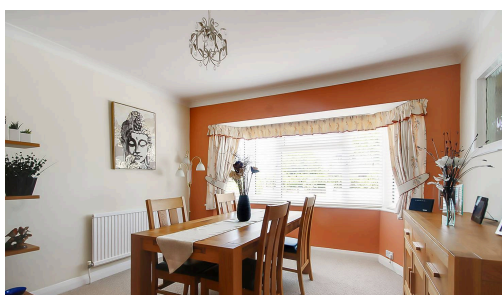
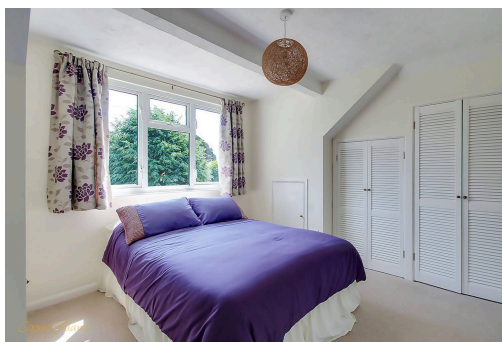
Nestled in the sought-after Sea Estate, this impressive detached chalet bungalow combines comfort, style, and a prime coastal location. The rear kitchen features sleek cream units, stunning solid wood worktops, and ample storage, while the lounge provides a warm, inviting atmosphere complete with a feature fireplace and space for a dining table and chairs. Boasting three double bedrooms, this home is designed for flexible living. Two bedrooms are conveniently located on the ground floor, including built in wardrobes to the primary bedroom, and the second is currently used as a dining room - while the third is upstairs. Recently rendered for a fresh, modern look, the property also offers an integral garage and a driveway for ample parking. The secluded rear garden provides a serene retreat, perfect for relaxing or entertaining. Located less than a mile from the stunning Rustington Beach, this home offers the best of coastal living in a highly desirable area.

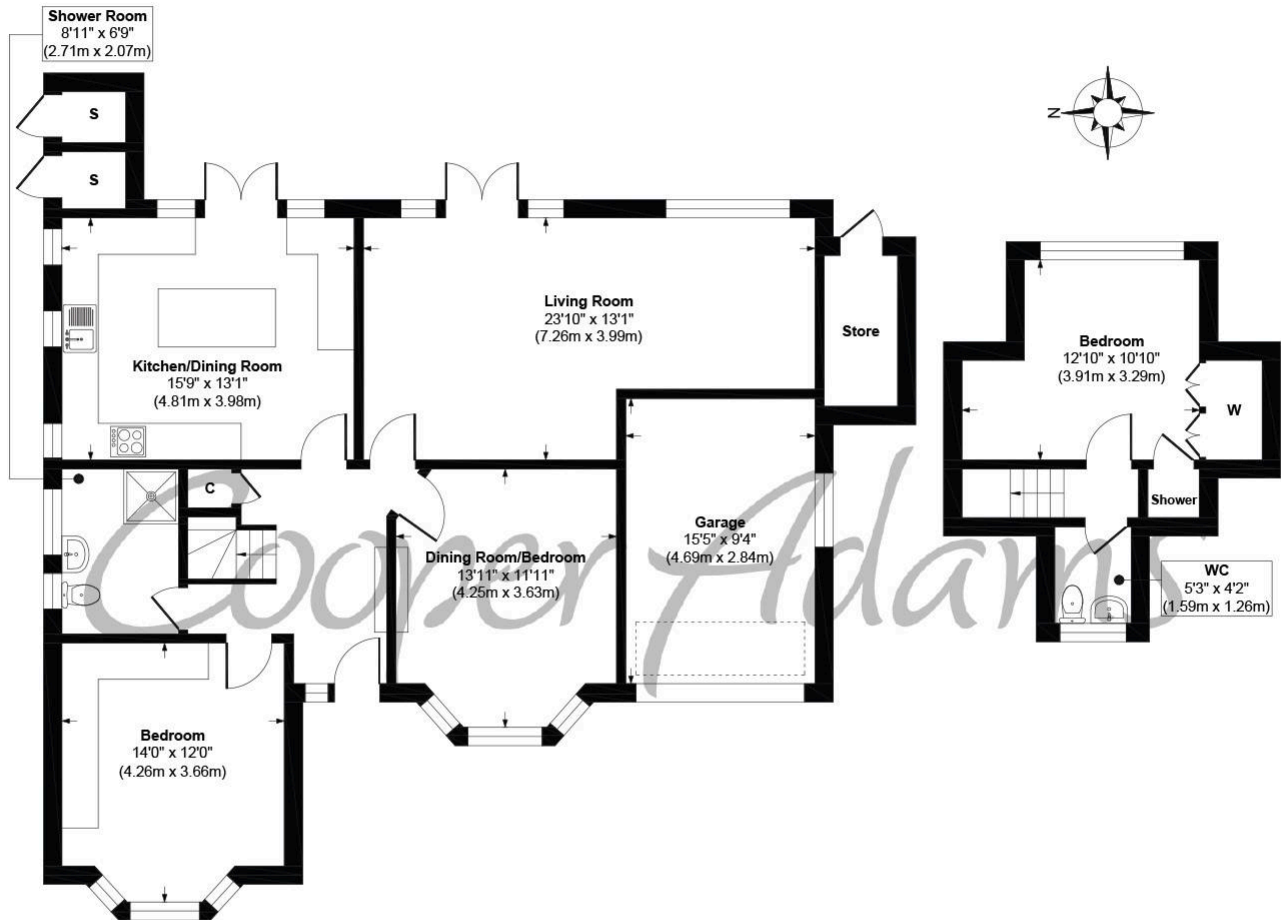
This property is "Legally Prepared." Cooper Adams has gathered key documents, including the title, plans, property forms, warranties, and EPC. Buyers must request these before offering.

The seller requires a 'Reservation Agreement' to protect serious buyers as they



Rustington, a charming seaside village in West Sussex, offers a welcoming community, excellent shops, restaurants, and nearby leisure activities like sailing and golf. Its unspoiled pebble beach is perfect for peaceful walks, providing a serene escape just minutes away. Ideally located for all amenities, Rustington is a delightful place to live and unwind.





Ground Floor
Approximate Floor Area
1167 sq. ft
(108.39 sq. m)

First Floor
Approximate Floor Area
202 sq. ft
(18.75 sq. m)

Meadway, Rustington
Approx. Gross Internal Floor Area 1369 sq. ft / 127.14 sq. m

Illustration for identification purposes only, measurements are approximate, not to scale

Copyright © Cooper Adams

Council Tax band: E, EPC Energy Efficiency Rating: D

This material is protected by laws of copyright which is owned by Cooper Adams. Whilst every attempt has been made to ensure the accuracy of these details and floor plan contained here, they do not constitute any offer or contract or part thereof. All measurements are always maximum measurements into bay windows, alcoves and for L shaped rooms. No guarantee is given on total square footage taken from the floor plan. The details, pictures, maps and floor plans are for illustration purposes only and not to scale. Any appliances and/or services have not been tested. Cooper Adams is a trading name of Cooper Adams Estates Limited registered at Bishopstone. Registered in England and Wales. Our registered number is 07127482. Our VAT Number is 982847172.

Lettings | Sales | Free valuations | Land & New Homes | Mortgages

FULL DETAILS OF THE MATERIAL INFORMATION ARE ON OUR WEBSITE - VIEWING STRICTLY BY APPOINTMENT WITH COOPER ADAMS

FOR MORE PHOTOS AND TO BOOK A VIEWING VISIT OUR WEBSITE - Tel: 01903 791 792 - www.cooper-adams.com