

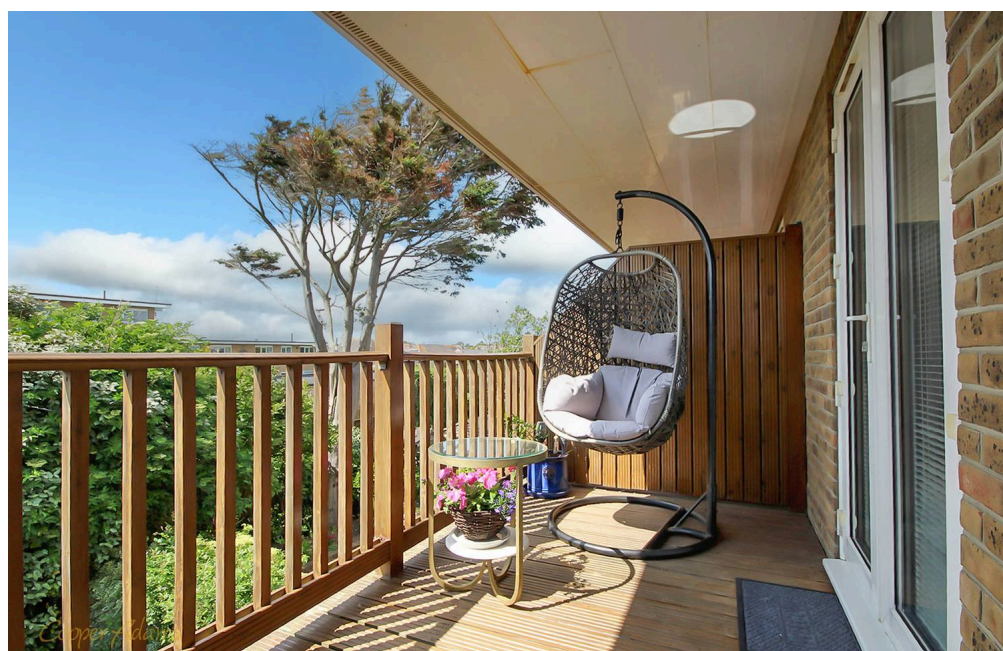
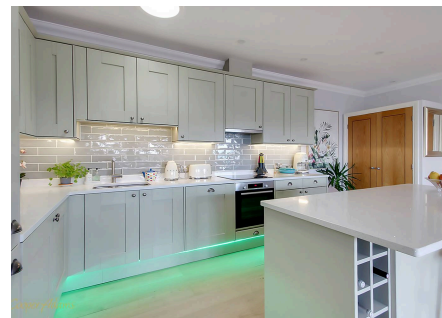
Sea Avenue, Rustington, BN16 2DL

Leasehold

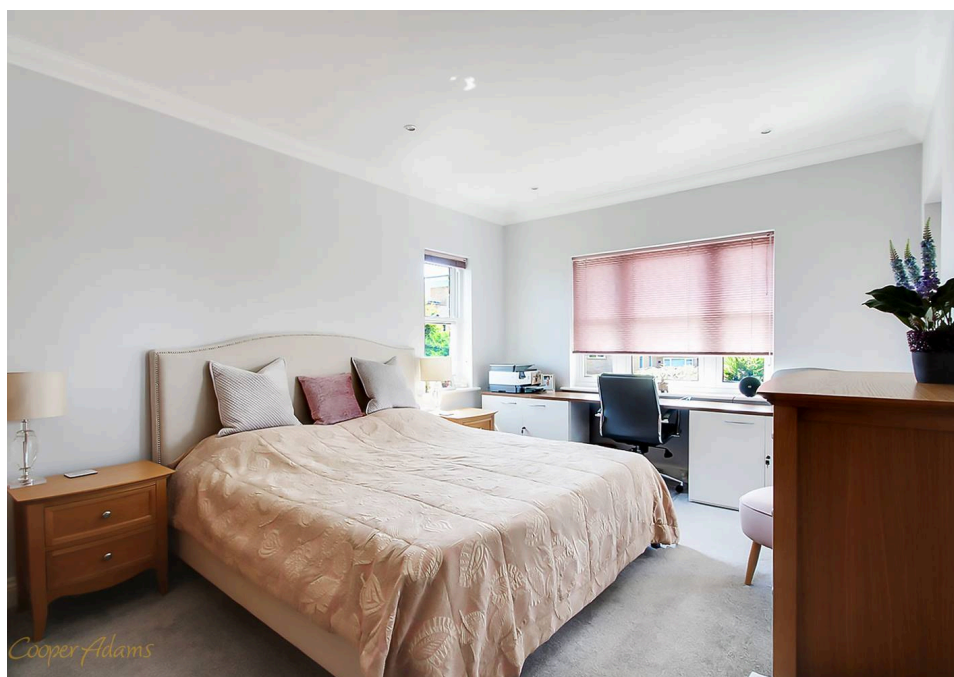
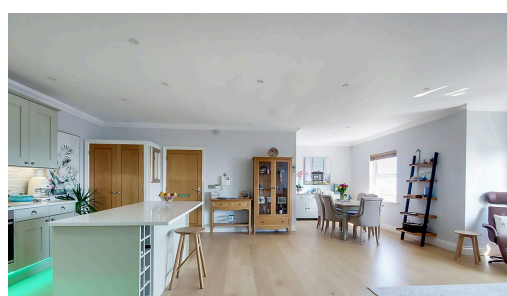
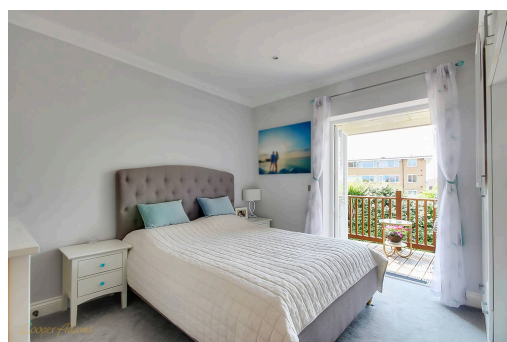
A Tastefully Modernised First-Floor Apartment • Two Double Bedrooms • Sea Views from the Living Room, master bedroom & Balcony! • LONG LEASE with No Ground Rent • Stunning Open-Plan Living Areas • Underfloor Heating Throughout • Secure Gated Parking with Visitor Spaces Available • Huge Loft • Just 50 metres from Rustington beach and a short stroll to Waitrose and all that Rustington village offers • Approx. 883 sq. ft (82 sq. m)

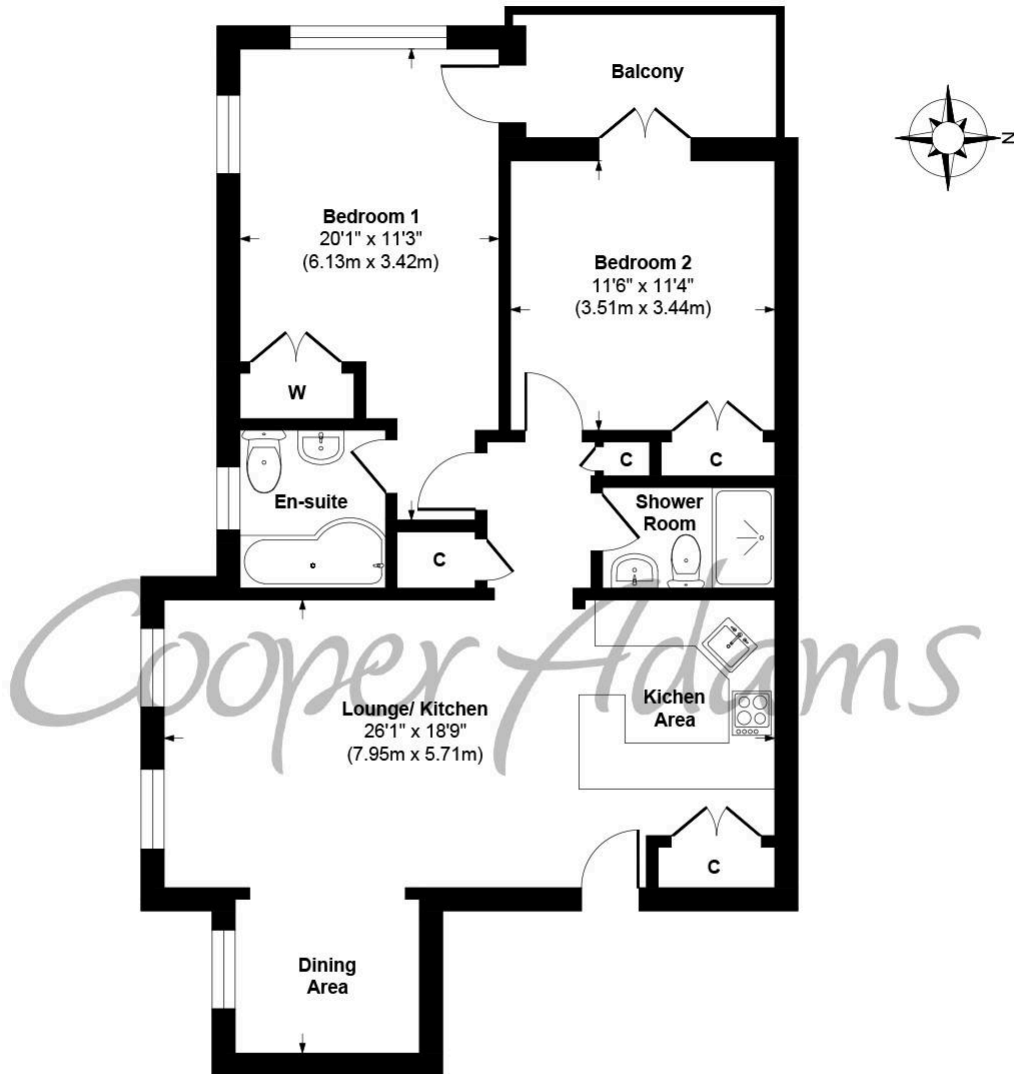
Cooper Adams

Situated on the tree lined and peaceful Sea Avenue in Rustington discover this stunning two double bedroom apartment, perfectly positioned in a gated development just moments from Rustington's beautiful beach! With captivating sea views from the living room, the open plan living area features 3 enormous south facing windows, a new luxurious fire place, real teak flooring and new lighting system and a private west-facing balcony to enjoy the sunsets, this home offers a seamless blend of modern design and coastal charm. The open-plan living area features a sleek, contemporary kitchen with the highest quality stone worktops hand made by Windsor's of Rustington in September 2024 complete with high-quality integrated appliances. The primary bedroom is complemented by a stylish en-suite with ceramic tiles of the highest quality (ex show house), and the property benefits from secure gated parking with visitor spaces. Additionally, the property benefits from underfloor heating throughout, and a large loft for convenience. The property also comes with Long Lease. If a life by the coast is what your heart desires, then this stunning apartment is certainly one to see!



Rustington, a charming seaside village in West Sussex, offers a welcoming community, excellent shops, restaurants, and nearby leisure activities like sailing and golf. Its unspoiled pebble beach is perfect for peaceful walks, providing a serene escape just minutes away. Ideally located for all amenities, Rustington is a delightful place to live and unwind.





First Floor
Approximate Floor Area
883 sq. ft
(82.00 sq. m)

Sea Avenue, Rustington

Approx. Gross Internal Floor Area 883 sq. ft / 82.00 sq. m

Illustration for identification purposes only, measurements are approximate, not to scale

Copyright © Cooper Adams

Council Tax band: F, EPC Energy Efficiency Rating: C, EPC Environmental Impact Rating: B

This material is protected by laws of copyright which is owned by Cooper Adams. Whilst every attempt has been made to ensure the accuracy of these details and floor plan contained here, they do not constitute any offer or contract or part thereof. All measurements are always maximum measurements into bay windows, alcoves and for L shaped rooms. No guarantee is given on total square footage taken from the floor plan. The details, pictures, maps and floor plans are for illustration purposes only and not to scale. Any appliances and/or services have not been tested. Cooper Adams is a trading name of Cooper Adams Estates Limited registered at Bishopstone. Registered in England and Wales. Our registered number is 07127482. Our VAT Number is 982847172.

Lettings | Sales | Free valuations | Land & New Homes | Mortgages

FULL DETAILS OF THE MATERIAL INFORMATION ARE ON OUR WEBSITE - VIEWING STRICTLY BY APPOINTMENT WITH COOPER ADAMS

FOR MORE PHOTOS AND TO BOOK A VIEWING VISIT OUR WEBSITE - Tel: 01903 791 792 - www.cooper-adams.com