

Cherry Avenue, Yapton, BN18 0LB

Freehold

Four Bedrooms • A Detached Family Home • Integral Garage • Driveway Parking for 3 Cars • Quiet Cul-de-Sac • Local Amenities only Half a Mile Away • Fantastic for First-Time Buyers or Investors • Approx. 1381 sq. ft (128.2 sq. m)

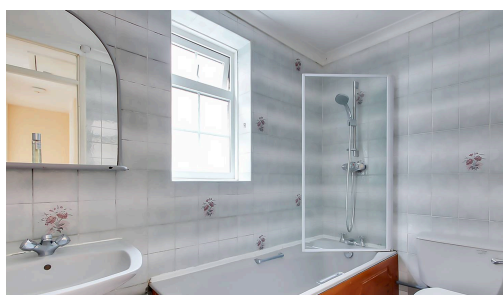
Cooper Adams

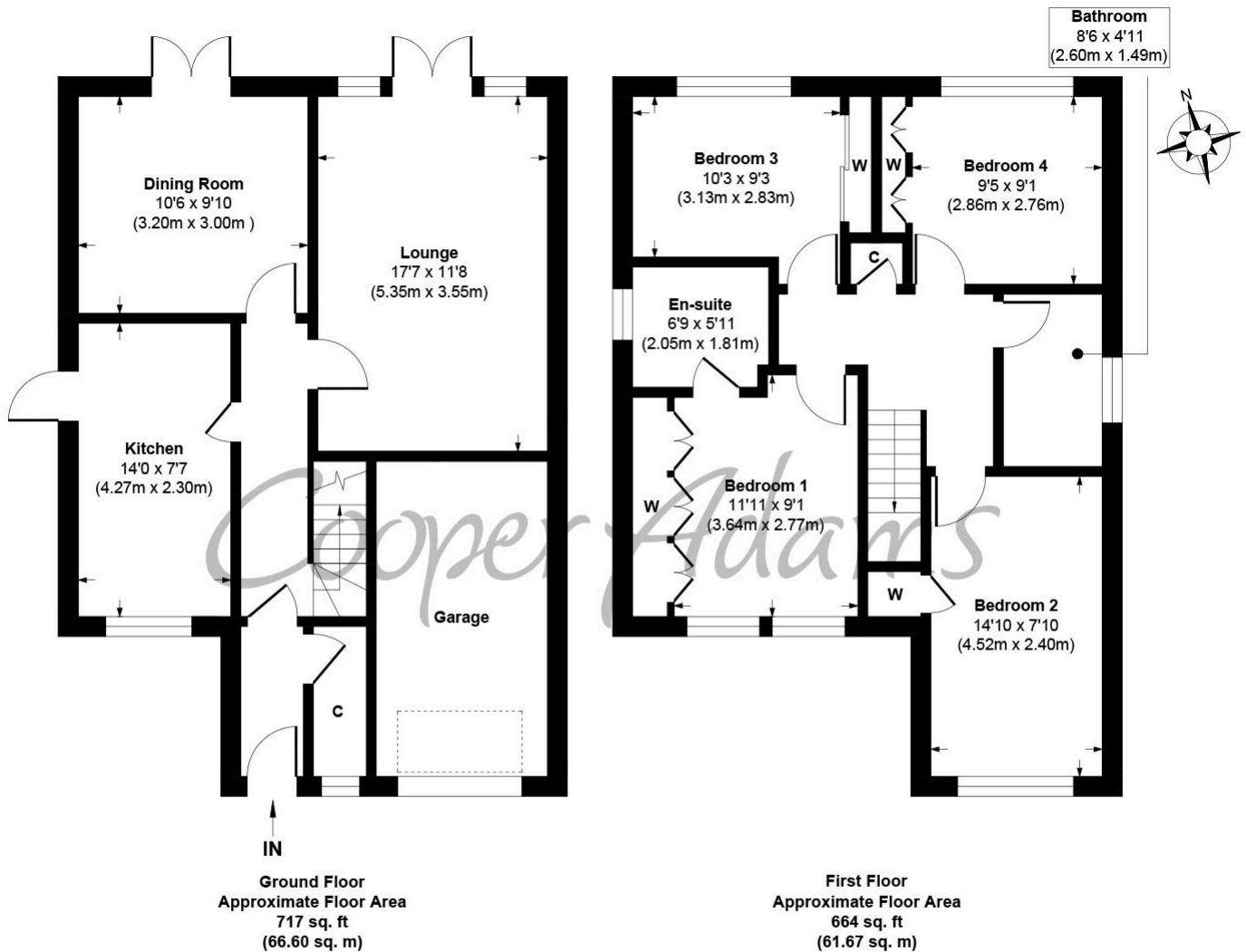
This spacious four-bedroom detached family home is located in a peaceful cul-de-sac, offering both privacy and convenience. Featuring an integral garage, providing secure parking or additional storage space, and is ideally situated just half a mile from local amenities, ensuring easy access to shops, schools, and essential services. The property is ready to move straight in, but for those with a flair for design, it also presents an exciting opportunity to unleash your creativity and transform it into your dream home. The property comprises a modern kitchen with integrated appliances, a living room, and a separate dining room, both offering direct access to the garden. The ground floor also includes a convenient WC. Upstairs, there are four bedrooms, a family bathroom, and an en-suite adjoining the primary bedroom.

Whether you're a first-time buyer or an investor seeking a property with rental potential, this home is certainly not one to miss. Its quiet location and versatile layout make it an appealing choice for a wide range of buyers.



Yapton is a charming West Sussex village nestled between Arundel and the coast. Just 3 miles away lies the historic town of Arundel, famous for its medieval castle, riverside walks, independent shops, and great selection of pubs and eateries. Head 4 miles south and you'll reach Littlehampton, offering award-winning beaches, a lively seafront, shops, cultural events, and leisure options like golf and the WAVE Sports Centre.





Cherry Avenue, Yapton

Approx. Gross Internal Floor Area 1381 sq. ft / 128.27 sq. m

Illustration for identification purposes only, measurements are approximate, not to scale

Copyright © Cooper Adams

Council Tax band: E, EPC Energy Efficiency Rating: D, EPC Environmental Impact Rating: E

This material is protected by laws of copyright which is owned by Cooper Adams. Whilst every attempt has been made to ensure the accuracy of these details and floor plan contained here, they do not constitute any offer or contract or part thereof. All measurements are always maximum measurements into bay windows, alcoves and for L shaped rooms. No guarantee is given on total square footage taken from the floor plan. The details, pictures, maps and floor plans are for illustration purposes only and not to scale. Any appliances and/or services have not been tested. Cooper Adams is a trading name of Cooper Adams Estates Limited registered at Bishopstone. Registered in England and Wales. Our registered number is 07127482. Our VAT Number is 982847172.

Lettings | Sales | Free valuations | Land & New Homes | Mortgages

FULL DETAILS OF THE MATERIAL INFORMATION ARE ON OUR WEBSITE - VIEWING STRICTLY BY APPOINTMENT WITH COOPER ADAMS

FOR MORE PHOTOS AND TO BOOK A VIEWING VISIT OUR WEBSITE - Tel: 01903 791 792 - www.cooper-adams.com