

Dingley Road, Rustington, BN16 3PY

Freehold

Three Bedrooms • A Mid-Terrace Family Home • SOUTH FACING GARDEN! • Chain Free • Driveway & Garage En-Bloc •  
Within Walking Distance to Rustington Village • Approx. 897 sq. ft (83.3 sq. m)

*Cooper Adams*

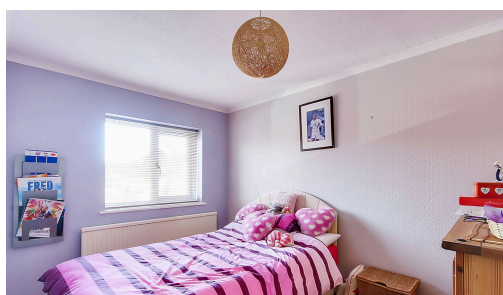
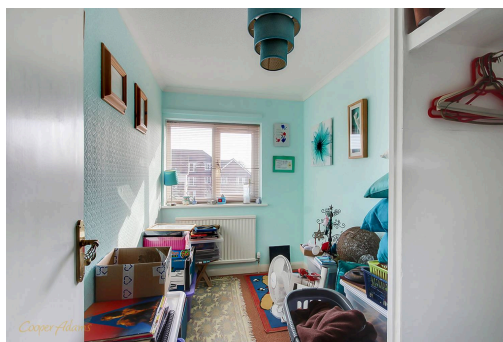


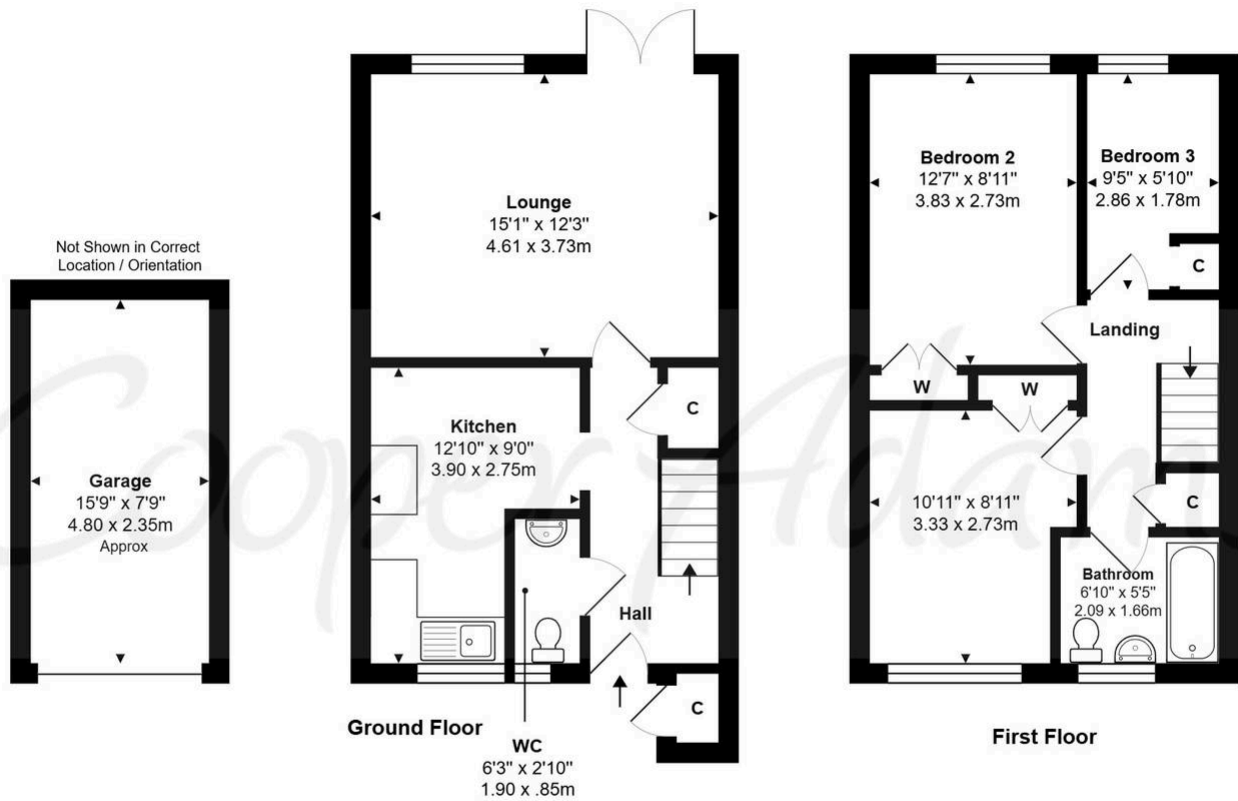
This three-bedroom family home offers practicality and comfort, featuring a garage en-bloc, a private driveway, and a low-maintenance south-facing rear garden. The bright living room opens to the garden through French doors, providing the perfect space to relax or entertain. The partially integrated kitchen features modern white cabinets and wood-effect laminate worktops, providing a sleek and contemporary feel. A convenient ground-floor cloakroom adds to the home's functionality. Upstairs, all three bedrooms include built-in storage, while the family bathroom is equipped with a bath, sink, and WC.

This property is "Legally Prepared." Cooper Adams has gathered key documents, including the title, plans, property forms, warranties, and EPC. Buyers must request these before offering. The seller requires a 'Reservation Agreement' to protect serious buyers as they proceed to exchange of contracts. Please be aware that probate will need to be granted before contracts can be exchanged.



Rustington, a charming seaside village in West Sussex, offers a welcoming community, excellent shops, restaurants, and nearby leisure activities like sailing and golf. Its unspoiled pebble beach is perfect for peaceful walks, providing a serene escape just minutes away. Ideally located for all amenities, Rustington is a delightful place to live and unwind.





Total Area: 897 ft<sup>2</sup> ... 83.3 m<sup>2</sup> (Includes Garage)

Whilst every attempt has been made to ensure the accuracy of the floor plan contained here, measurements are approximate and no responsibility is taken for error, omission or mis-statement.

This plan is for illustrative purposes only and should be used as such by any prospective purchaser.  
Created by Jtm 2025

Council Tax band: C, EPC Energy Efficiency Rating: C

This material is protected by laws of copyright which is owned by Cooper Adams. Whilst every attempt has been made to ensure the accuracy of these details and floor plan contained here, they do not constitute any offer or contract or part thereof. All measurements are always maximum measurements into bay windows, alcoves and for L shaped rooms. No guarantee is given on total square footage taken from the floor plan. The details, pictures, maps and floor plans are for illustration purposes only and not to scale. Any appliances and/or services have not been tested. Cooper Adams is a trading name of Cooper Adams Estates Limited registered at Bishopstone. Registered in England and Wales. Our registered number is 07127482. Our VAT Number is 982847172.

Lettings | Sales | Free valuations | Land & New Homes | Mortgages

FULL DETAILS OF THE MATERIAL INFORMATION ARE ON OUR WEBSITE - VIEWING STRICTLY BY APPOINTMENT WITH COOPER ADAMS

FOR MORE PHOTOS AND TO BOOK A VIEWING VISIT OUR WEBSITE - Tel: 01903 791 792 - [www.cooper-adams.com](http://www.cooper-adams.com)