



Albert Road, Rustington, BN16 3JS

Freehold

A Semi-Detached Family Home • Four Bedrooms • Secluded Rear Garden • Open Fireplace • Plenty of Original Victorian Features • Garden Workshop • Close to Local Amenities and Bus Links • Approx. 1199 sq. ft (111.4 sq. m)

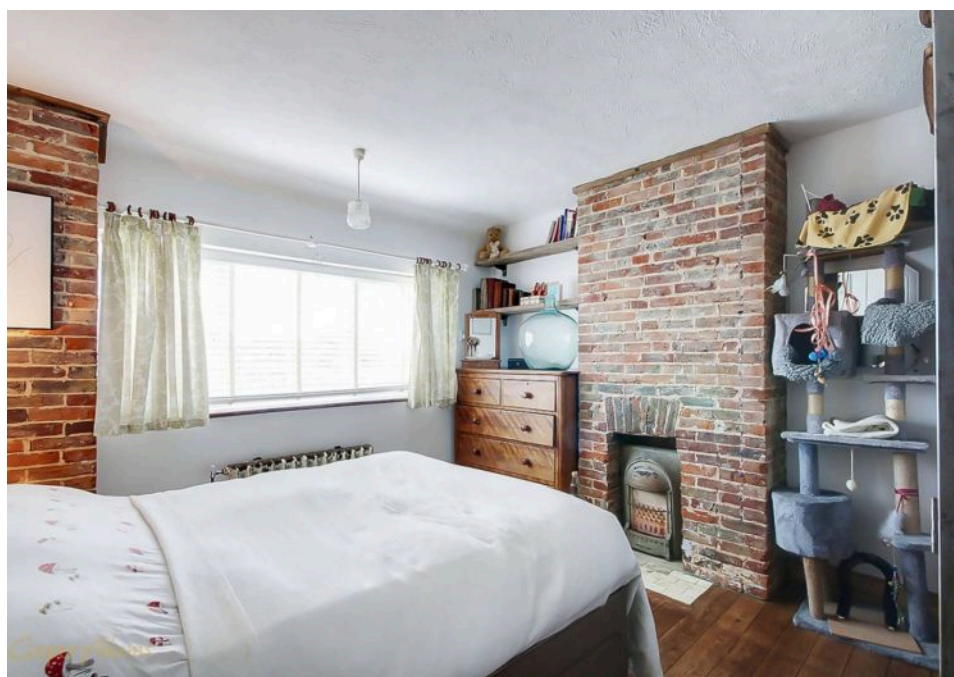
*Cooper Adams*

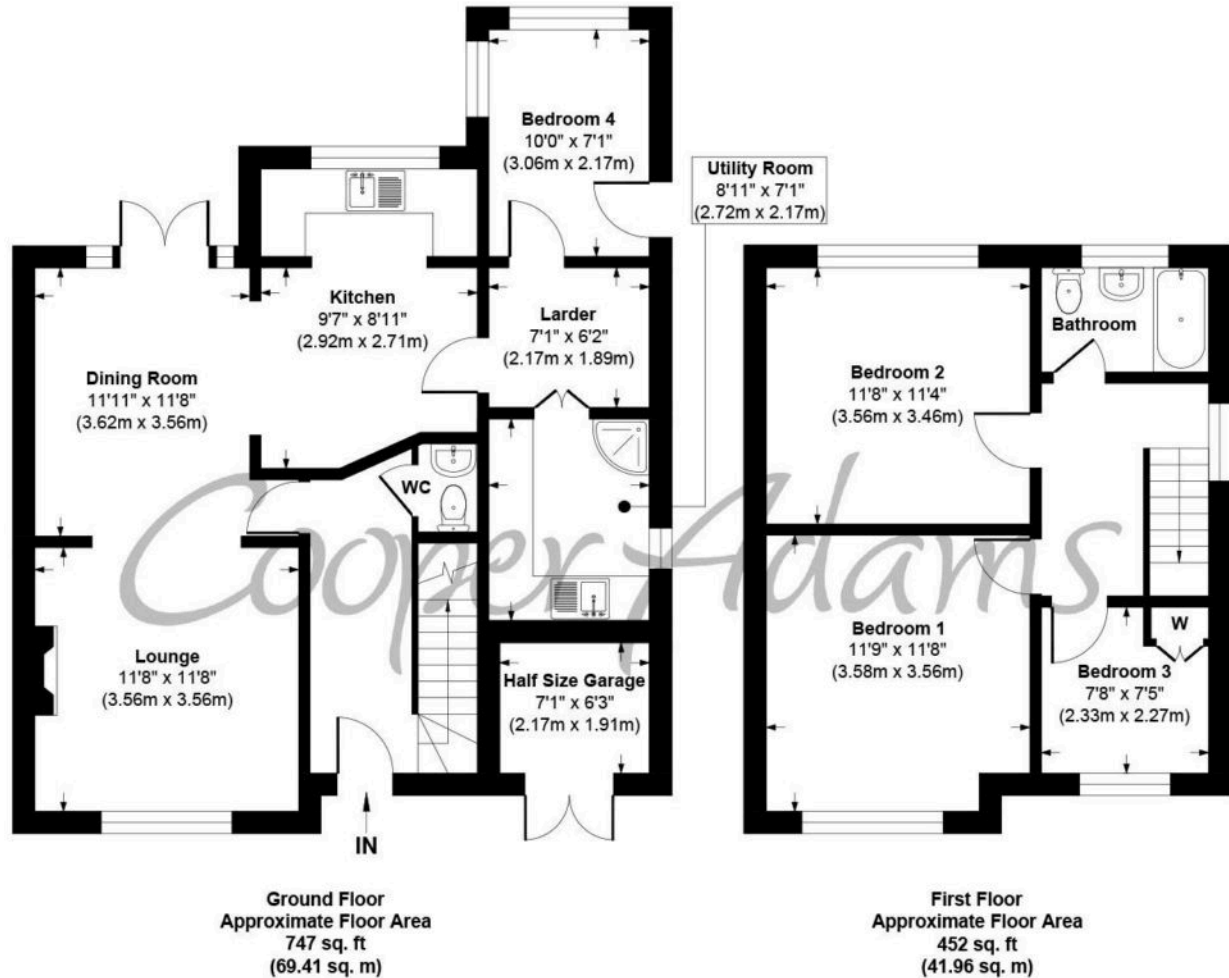
Discover this one-of-a-kind, four bed family home that seamlessly blends unique features with timeless charm. Every corner of this property tells a story, offering a warm and inviting atmosphere for modern living. The ground floor benefits from a south-facing living room with a working fireplace that provides a bright and cosy retreat, while the dining area showcases reclaimed beach groynes, adding a subtle coastal touch. The kitchen is highlighted by a retro 1950s New World Radiation cooker, classic wooden cupboards and a solid wood worktop. The larder and utility room provide ample space for further storage. Additionally, there is a versatile ground-floor bedroom, which could be used as a guest room or as an office for those who work from home. The hallway has custom-built shelving crafted from reclaimed scaffold boards and includes a WC and under-stairs storage for added convenience. Upstairs there are three bedrooms, two of which are doubles. The bathroom continues the property's classic aesthetic with a cast iron bath and high-level toilet cistern. Throughout the home there are also original Victorian radiators, baker light switches, and exposed brick walls, that perfectly compliments the home's charm.



With a perfect balance of character, individuality, and everyday practicality, this home certainly creates an inviting space that is ideal for family life.

Rustington, a charming seaside village in West Sussex, offers a welcoming community, excellent shops, restaurants, and nearby leisure activities like sailing and golf. Its unspoiled pebble beach is perfect for peaceful walks, providing a serene escape just minutes away. Ideally located for all amenities, Rustington is a delightful place to live and unwind.





Albert Road, Rustington

Chatsworth Approx. Gross Internal Floor Area 1199 sq. ft / 111.37 sq. m

Illustration for identification purposes only, measurements are approximate, not to scale

Copyright © Cooper Adams

Council Tax band: C, EPC Energy Efficiency Rating: D, EPC Environmental Impact Rating: D

This material is protected by laws of copyright which is owned by Cooper Adams. Whilst every attempt has been made to ensure the accuracy of these details and floor plan contained here, they do not constitute any offer or contract or part thereof. All measurements are always maximum measurements into bay windows, alcoves and for L shaped rooms. No guarantee is given on total square footage taken from the floor plan. The details, pictures, maps and floor plans are for illustration purposes only and not to scale. Any appliances and/or services have not been tested. Cooper Adams is a trading name of Cooper Adams Estates Limited registered at Bishopstone. Registered in England and Wales. Our registered number is 07127482. Our VAT Number is 982847172.

Lettings | Sales | Free valuations | Land & New Homes | Mortgages

FULL DETAILS OF THE MATERIAL INFORMATION ARE ON OUR WEBSITE - VIEWING STRICTLY BY APPOINTMENT WITH COOPER ADAMS

FOR MORE PHOTOS AND TO BOOK A VIEWING VISIT OUR WEBSITE - Tel: 01903 791 792 - [www.cooper-adams.com](http://www.cooper-adams.com)