



Kirdford Close, Rustington, BN16 2LW

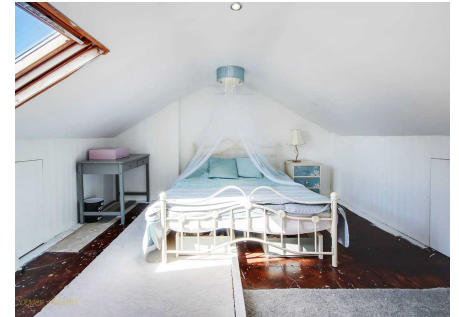
Freehold

End of Terrace Family Home • Three-Bedrooms • Conservatory • Loft Space/Storage Room • Garage en-Bloc • Low Maintenance Garden • Close to Fantastic Local Schools • Less Than a Ten Minute Walk to Rustington Beach • Conveniently Located Close to Rustington Village • Approx. 1151 sq. ft (106.9 sq. m)

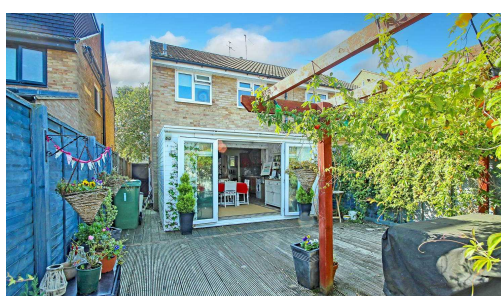
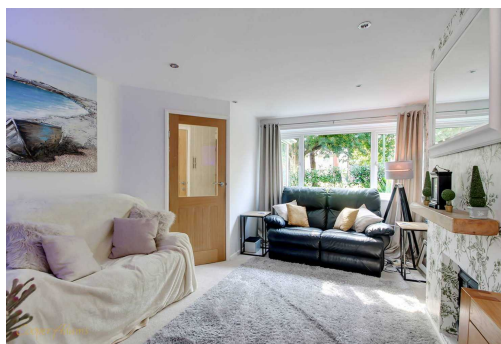
Cooper Adams

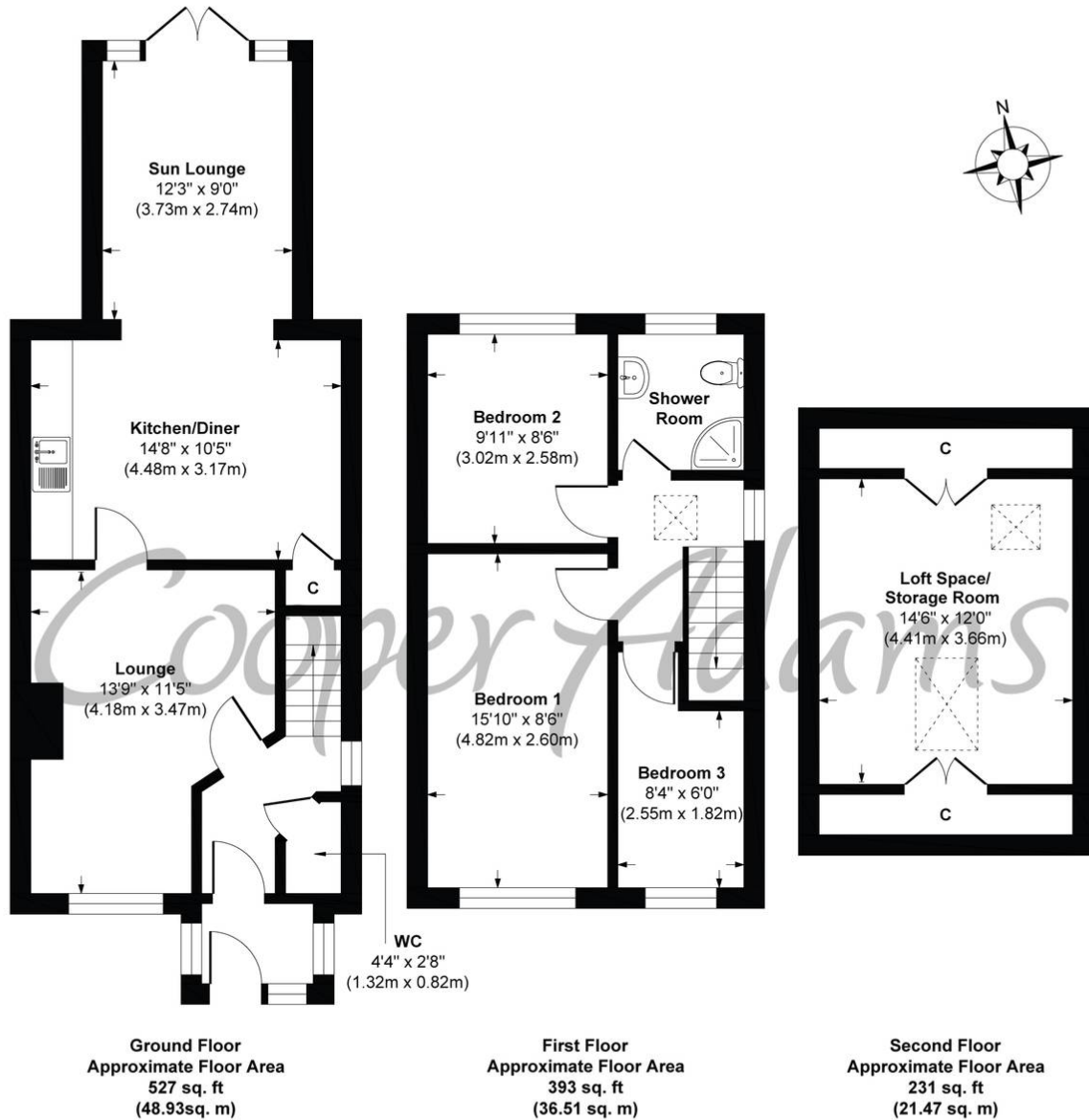
Take a look at this charming three-bedroom semi-detached house located in a quiet cul-de-sac in Rustington! Benefiting from a large open-plan kitchen/diner with a separate living room, new flooring throughout, a spacious loft/storage room and a low maintenance rear garden. There is also a garage en-bloc and off street parking available. This property would make a wonderful starter home for any young family looking to set down some roots close to the sea, or as a next step on the property ladder. Perfectly located between Rustington's beautiful beach and village this home really does offer the best of both worlds.

The seller requires a 'Reservation Agreement' to protect serious buyers as they proceed to exchange of contracts.



Rustington, a charming seaside village in West Sussex, offers a welcoming community, excellent shops, restaurants, and nearby leisure activities like sailing and golf. Its unspoiled pebble beach is perfect for peaceful walks, providing a serene escape just minutes away. Ideally located for all amenities, Rustington is a delightful place to live and unwind.





Kirdford Close, Rustington
Approx. Gross Internal Floor Area 1151 sq. ft / 106.91 sq. m

Illustration for identification purposes only, measurements are approximate, not to scale

Copyright © Cooper Adams

Council Tax band: C, EPC Energy Efficiency Rating: D, EPC Environmental Impact Rating: D

This material is protected by laws of copyright which is owned by Cooper Adams. Whilst every attempt has been made to ensure the accuracy of these details and floor plan contained here, they do not constitute any offer or contract or part thereof. All measurements are always maximum measurements into bay windows, alcoves and for L shaped rooms. No guarantee is given on total square footage taken from the floor plan. The details, pictures, maps and floor plans are for illustration purposes only and not to scale. Any appliances and/or services have not been tested. Cooper Adams is a trading name of Cooper Adams Estate Limited registered at Bishopstone. Registered in England and Wales. Our registered number is 07127482. Our VAT Number is 982847172.