



## Tasman Close, Rustington, BN16 2BD

Freehold

Two Double Bedrooms • Detached Bungalow • CHAIN FREE! • Secluded West-Facing Garden • Driveway & Garage • Within Minutes from Rustingtons Beach • Less Than a Mile to Rustington Village • Approx. 1211 sq. ft (112.5 sq. m)

*CHAIN FREE* Quiet Living! Located within the popular Ruston Park area is this two-bedroom detached bungalow boasting a sunny, secluded rear garden. Within a few minutes' walk from Rustington's beautiful beach and less than a mile to Rustington's village for local shops, eateries and more, this property certainly offers the best of both worlds. If a home by the sea is what your heart desires, then book your viewing to avoid disappointment.

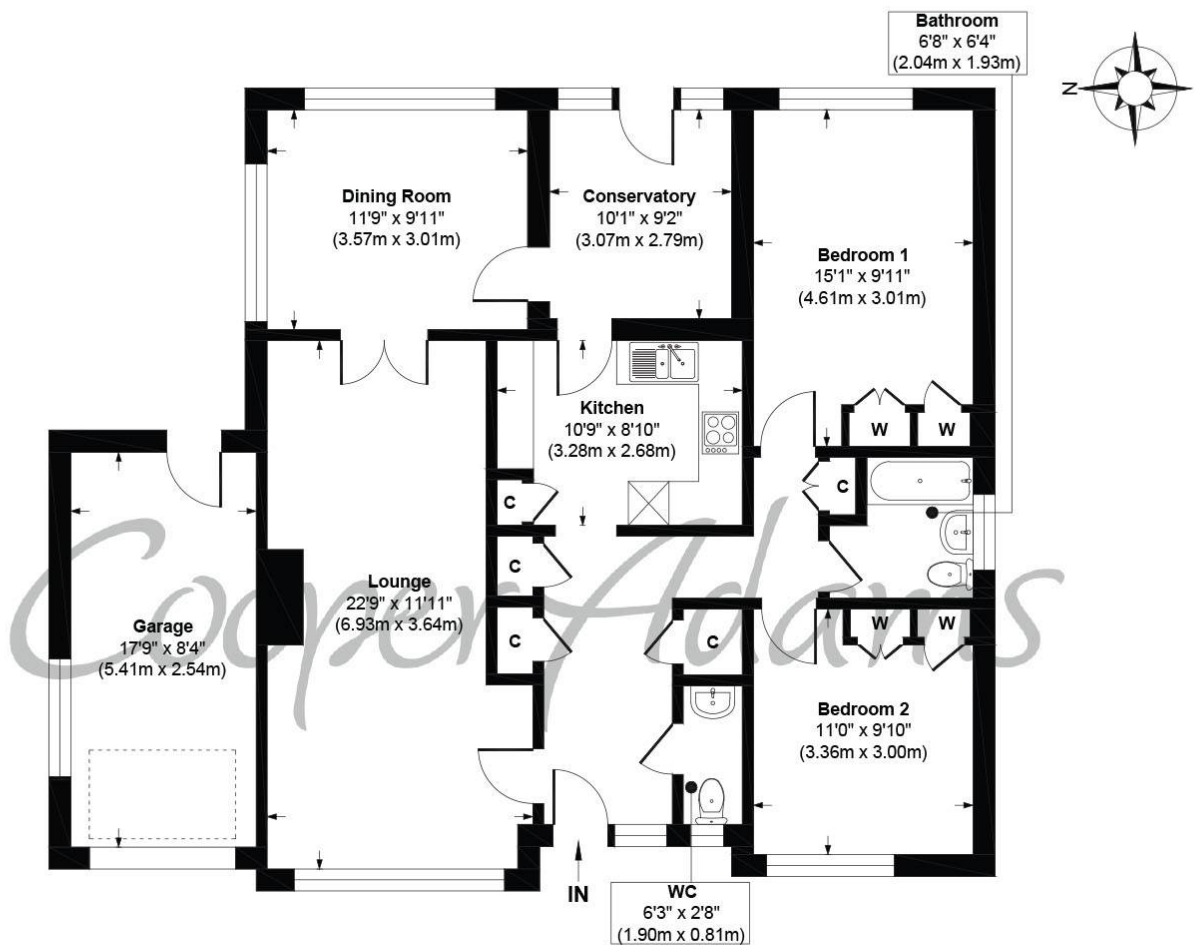
This property is "Legally Prepared." Cooper Adams has gathered key documents, including the title, plans, property forms, warranties, and EPC. Buyers must request these before offering.

The seller requires a 'Reservation Agreement' to protect serious buyers as they proceed to exchange of contracts.



Rustington, a charming seaside village in West Sussex, offers a welcoming community, excellent shops, restaurants, and nearby leisure activities like sailing and golf. Its unspoiled pebble beach is perfect for peaceful walks, providing a serene escape just minutes away. Ideally located for all amenities, Rustington is a delightful place to live and unwind.





Ground Floor  
 Approximate Floor Area  
 1211 sq. ft  
 (112.55 sq. m)

**Tasman Close, Rustington**  
**Approx. Gross Internal Floor Area 1211 sq. ft / 112.55 sq. m**

Illustration for identification purposes only, measurements are approximate, not to scale

Copyright © Cooper Adams