



Thirsk Road, Yarm, TS15 9WF
£156,000

NO CHAIN. Deceptively spacious 2 Bedroom 2 Bathroom Mews Cottage in a quiet Secure gated complex in the popular area of Kirklevington. Easy access to A19 and only 10-minute drive into the historic Yarm high street with lots of boutique shops, restaurants, and bars. The Cottage is modern and neutrally decorated throughout and benefits from a Spacious living room and separate kitchen with fitted units and space for table and chairs, French doors out onto a private rear garden and Wc. On the First Floor there is 2 large double bedrooms both with Ensuite bathrooms. Externally there is allocated and visitor parking and a lovely private small rear terrace. Access to secure bin store and bike store. Perfect First time buyers property. Service charges £491.36 per annum

Entrance Hall

Lounge

13' 9" x 11' 6" (4.19m x 3.50m)

Kitchen/Diner

14' 8" x 10' 4" (4.47m x 3.15m)

Wc

Bedroom 1

11' 7" x 10' 6" (3.53m x 3.20m)

Bedroom 1 Ensuite

8' 6" x 5' 6" (2.59m x 1.68m)

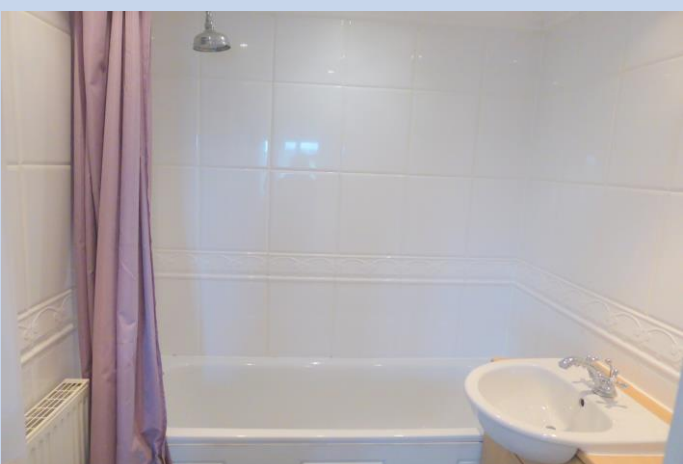
Bedroom 2

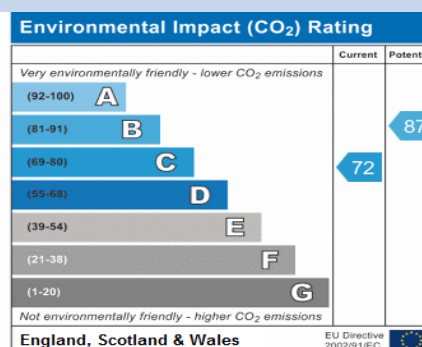
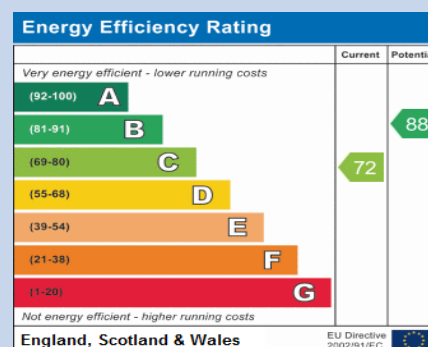
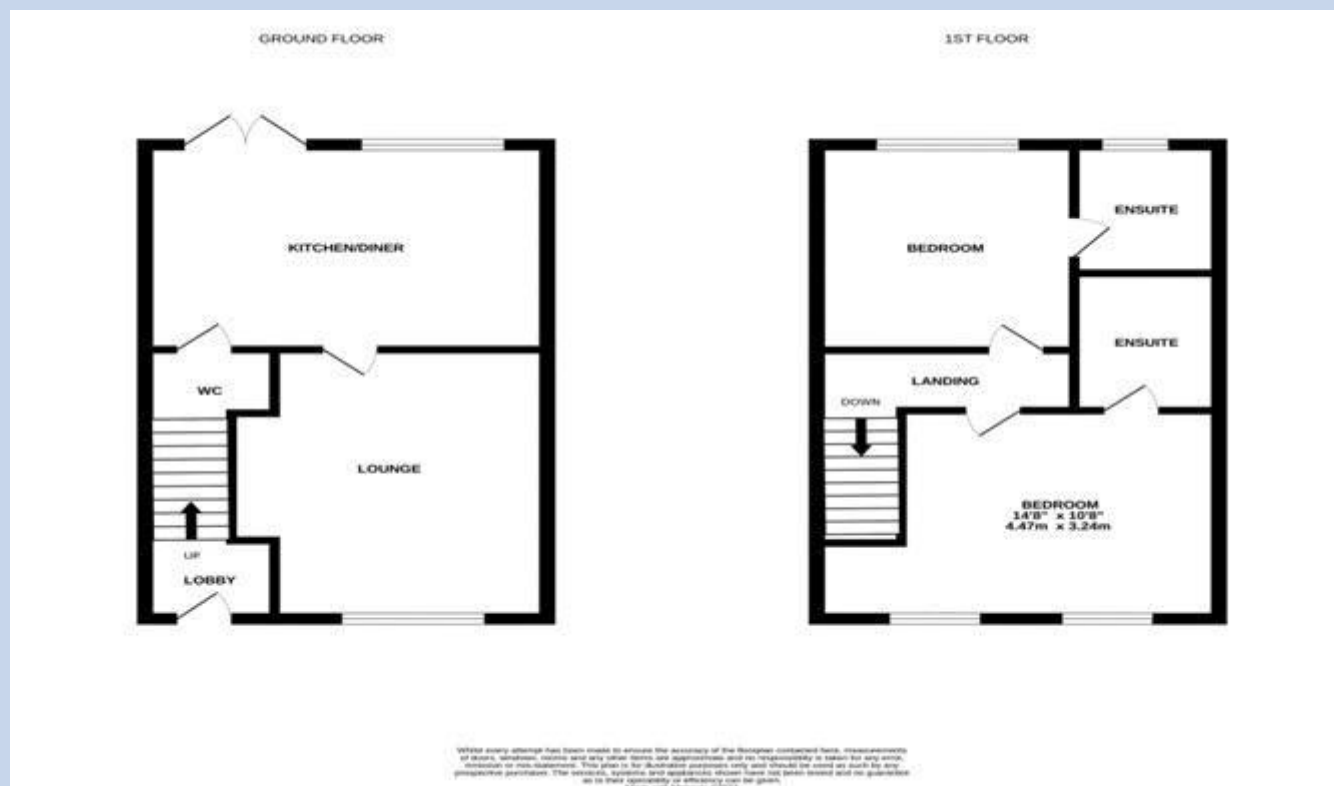
10' 6" x 8' 9" (3.20m x 2.66m)

Bedroom 2 Ensuite

6' 3" x 5' 7" (1.90m x 1.70m)







House Clickers Ltd
Tel: 01642789649 , enquiries@houseclickers.co.uk
www.houseclickers.co.uk