

 **HOUSE
CLICKERS**
YOUR LOCAL PROPERTY EXPERTS



High Church Wynd, Yarm, TS15 9BQ
£160,000

NO CHAIN. Guaranteed to Appeal to a variety of buyers this Superbly Presented Two Bedroom First Floor Apartment set within a Small Development of Eight Apartments off High Church Wynd in Yarm only walking distance to shops, bars and restaurants. The apartment has a lovely homely feel, neutrally decorated throughout and Finished to an exceptional standard. The Delightful Lounge has a fantastic feature Electric Fire and Access to a private Balcony, the Kitchen has a small breakfast bar and comes with Modern White High Gloss Units and a range of Appliances, there are two double bedrooms and a modern bathroom that has a rainforest power shower and white Three-Piece Suite. The apartment is Gas Central Heated and Double glazed and also benefits from Secure Communal Entrance and 1 Allocated Parking space. Currently rented at 750pcm

Lounge

12' 9" x 15' 5" (3.88m x 4.70m)

Kitchen

9' 11" x 6' 9" (3.02m x 2.06m)

Bedroom 1

10' 4" x 11' 9" (3.15m x 3.58m)

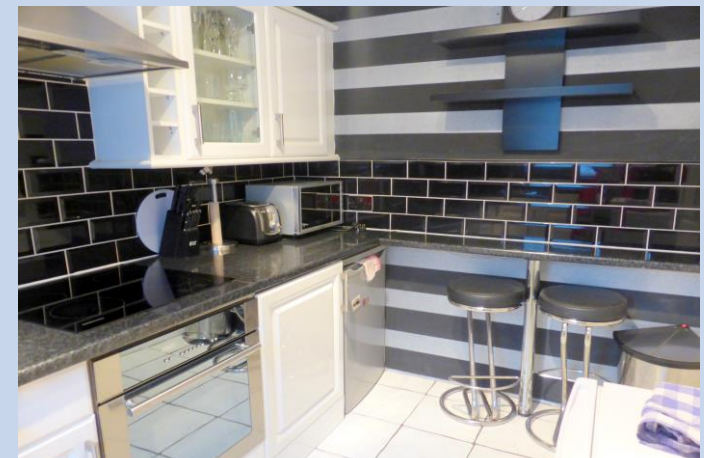
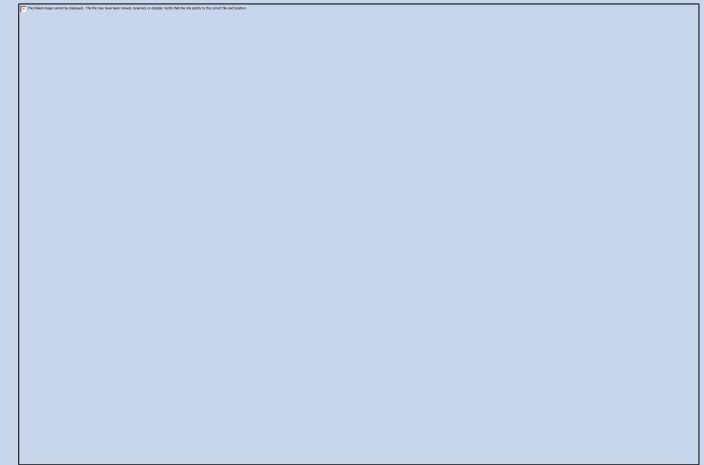
Bedroom 2

7' 11" x 10' 7" (2.41m x 3.22m)

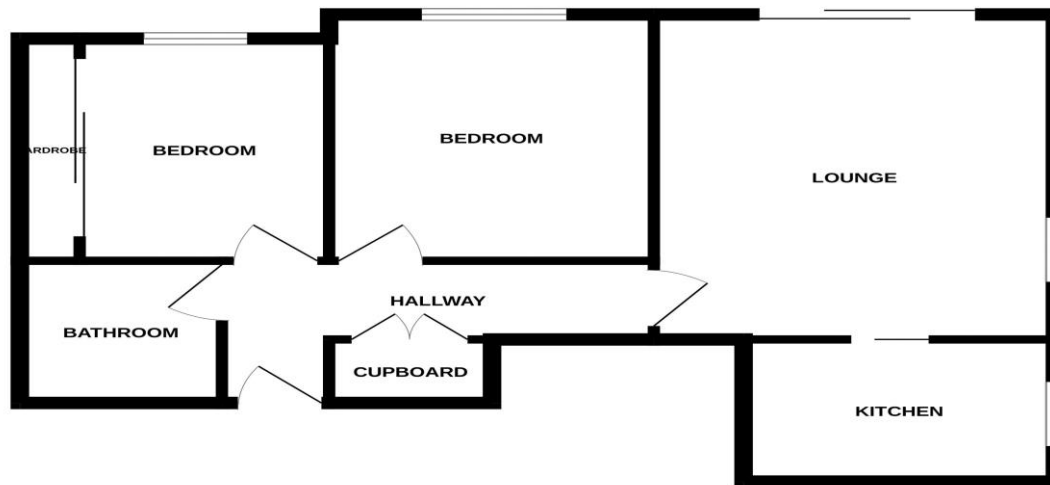
Bathroom

6' 5" x 6' 9" (1.95m x 2.06m)

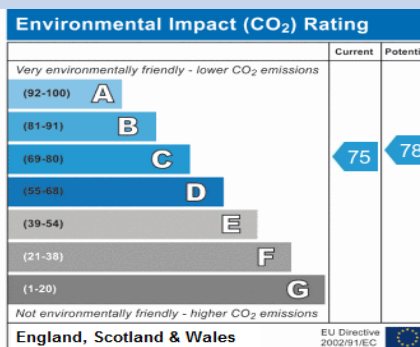
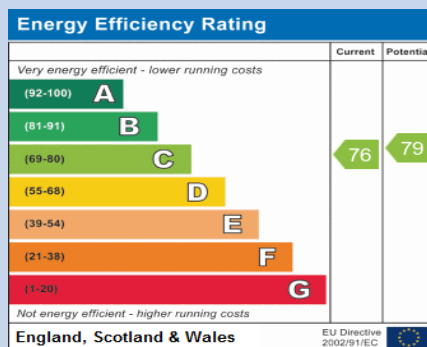




GROUND FLOOR
610 sq.ft. (56.7 sq.m.) approx.



TOTAL FLOOR AREA : 610 sq.ft. (56.7 sq.m.) approx.
Whilst every attempt has been made to ensure the accuracy of the floorplan contained here, measurements of doors, windows, rooms and any other items are approximate and no responsibility is taken for any error, omission or mis-statement. This plan is for illustrative purposes only and should be used as such by any prospective purchaser. The services, systems and appliances shown have not been tested and no guarantee as to their operability or efficiency can be given.
Made with Metropix ©2022



House Clickers Ltd
Tel: 01642789649, enquiries@houseclickers.co.uk
www.houseclickers.co.uk