

KENSINGTON GARDENS SQUARE

LONDON



£1,270 per week
TO LET

Breteuil
REMARKABLE HOMES

KENSINGTON GARDENS SQUARE



- Unique private access to garden Square
- 2 double bedrooms
- Period features
- Lift and on site building manager
- Modern, semi open-plan kitchen
- 2 bathrooms (one en suite)
- Wood flooring
- Furnished or unfurnished
- Available now

Beautiful apartment finished to a high standard. The modern reception room is a perfect place to entertain in style or relax in comfort. The 2 double bedrooms are perfect for sharers or anyone wanting a good guest room. Private access to the garden.

KENSINGTON GARDENS SQUARE

This is a beautiful apartment which has been finished to a high standard. It is on the 4th floor (with a lift) of this delightful, Grade II listed, portered building. The reception room has plenty of natural light and leafy views. It is a lovely space to either entertain in style or relax in comfort. The modern, semi open-plan, kitchen has everything you will need including a wine cooler. The 2 double bedrooms have ample storage and this along with the 2 modern bathrooms (one en-suite) make it ideal for friends sharing or anyone looking for a welcoming guest bedroom. The entire building has been sensitively renovated to give a lovely blend of modern finishes and period features. There is also direct private access through the building into the communal gardens so you can enjoy this peaceful oasis during the summer months ahead.

The apartment is ideally located in a quiet, residential part of the ever popular Bayswater area of Prime Central London. It is nestled amidst a fantastic array of eateries from casual Gastro pubs to award winning restaurants. It is close to Notting Hill and Westbourne Grove with its mix of eclectic, trendy shops and high end designer boutiques. It is an easy stroll to the wide open spaces of Hyde Park, perfect for a lazy day in the sun or going boating, cycling or horse riding. It has great transport links nearby making it easy to commute into the City or the West End or travel outside London.

Holding deposit: Equal to 1 weeks rent
Security deposit: Equal to 1 months rent
Borough: Westminster
Council tax band: G
EPC rating: C
Lease length: Minimum term of 6 months

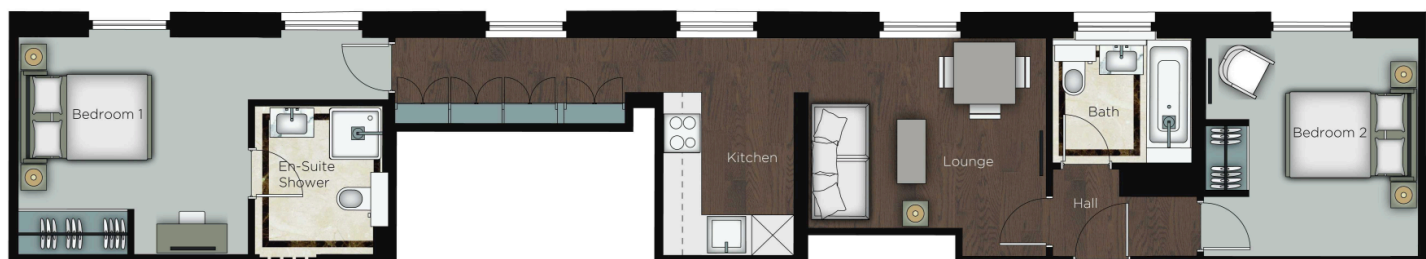
£1,270 per week

TO LET

These particulars do not form part of any offer or contract and must not be relied upon as statements or representations of fact. Any areas, measurements or distances are approximate. The text, photographs and plans are for guidance only and are not necessarily comprehensive. It should not be assumed that the property has all the necessary planning, building regulation or other consents and we have not tested any services, equipment or facilities. Purchasers must satisfy themselves by inspection or otherwise.

Breteil
REMARKABLE HOMES

KENSINGTON GARDENS SQUARE



£1,270 per week

TO LET

These particulars do not form part of any offer or contract and must not be relied upon as statements or representations of fact. Any areas, measurements or distances are approximate. The text, photographs and plans are for guidance only and are not necessarily comprehensive. It should not be assumed that the property has all the necessary planning, building regulation or other consents and we have not tested any services, equipment or facilities. Purchasers must satisfy themselves by inspection or otherwise.

Breteuil
REMARKABLE HOMES