

RYECROFT STREET

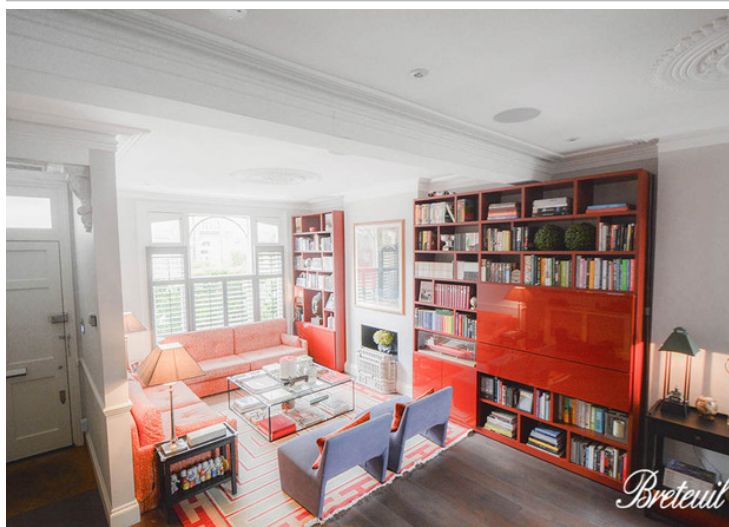
LONDON



£2,250 per week
TO LET

Breteuil
REMARKABLE HOMES

RYECROFT STREET



- 4 bedrooms
- 1 study/dressing room
- 2 reception rooms
- 3 bathrooms
- wooden floor
- integrated sound system
- garden
- Available TBC

Located in a famous Peterborough estate area, close to French schools Marie d'Orliac and Ecole des petits, short walking distance to Parsons Green tube station and all the amenities of Fulham, a spacious great condition family house comprising a spacious reception room, big eat-in kitchen, garden and guest loo on the ground floor, another reception area/media room and a utility room on the lower ground level, 4 double bedrooms, 1 study/dressing room, 3 bathrooms upstairs.

RYECROFT STREET

Located in a famous Peterborough estate area, close to French schools Marie d'Orliac and Ecole des petits, short walking distance to Parsons Green tube station and all the amenities of Fulham, a spacious great condition family house comprising a spacious reception room, big eat-in kitchen, garden and guest loo on the ground floor, another reception area/media room and a utility room on the lower ground level, 4 double bedrooms, 1 study/dressing room, 3 bathrooms upstairs.

£2,250 per week

TO LET

These particulars do not form part of any offer or contract and must not be relied upon as statements or representations of fact. Any areas, measurements or distances are approximate. The text, photographs and plans are for guidance only and are not necessarily comprehensive. It should not be assumed that the property has all the necessary planning, building regulation or other consents and we have not tested any services, equipment or facilities. Purchasers must satisfy themselves by inspection or otherwise.

Breteuil

REMARKABLE HOMES

RYECROFT STREET

Ryecroft Street

Approximate Gross Internal Area = 2239 sq ft / 207.8 sq m
(Excluding Reduced Headroom)
Reduced Headroom = 57 sq ft / 5.3 sq m
Total = 2296 sq ft / 213.1 sq m



Not to scale, for guidance only and must not be relied upon as a statement of fact.
All measurements and areas are approximate only and have been prepared in accordance with the current edition of the RICS Code of Measuring Practice.

£2,250 per week

TO LET

These particulars do not form part of any offer or contract and must not be relied upon as statements or representations of fact. Any areas, measurements or distances are approximate. The text, photographs and plans are for guidance only and are not necessarily comprehensive. It should not be assumed that the property has all the necessary planning, building regulation or other consents and we have not tested any services, equipment or facilities. Purchasers must satisfy themselves by inspection or otherwise.

Breteuil
REMARKABLE HOMES