

PRINCES GATE

LONDON



£15,000 per week
TO LET

Breteuil
REMARKABLE HOMES

PRINCES GATE



- Private swimming pool
- Large private terrace
- 5 bedrooms all en-suite
- Porter
- 6 reception rooms
- Period building
- Over 7,000 square feet
- High quality finish
- Furnished
- Available now

A truly outstanding property which has a private pool and large private terrace. It has been finished to a very high standard. With 6 reception rooms, this is an ideal apartment to entertain friends, family or anyone else. Luxury living in London!

PRINCES GATE

This is a truly outstanding property which has a private pool and large private terrace in a period, portered building. It has been finished to a very high standard. With 6 reception rooms including an extremely elegant reception room as well as a cinema room, this is an ideal apartment in which to entertain. It has been finished to a very high standard and such properties are rarely found on the market. There are 5 bedrooms which are all en-suite and at over 7000 square feet there is room for everyone even when working from home. Definitely luxury living in London!

This area is always much sought after as it is one of the most desirable parts of Prime Central London. There are fantastic schools close by including Knightsbridge School, Hill House and Eaton Square School. There is a plethora of great eateries moments away from Michelin starred restaurants to relaxed bistros and cosy cafes. Knightsbridge has also long been one of London's go-to shopping areas with its fabulous boutique designer shops as well as independent couturiers. The property is ideally located close to the open spaces of Hyde Park where you can walk, cycle, run or go horse riding. It is on one of Knightsbridge's most famous streets which is the home of the Natural History and Victoria and Albert Museums.

Holding deposit: Equal to 1 weeks rent
Security deposit: Equal to 6 weeks rent
Borough: Westminster
Council tax band: H
EPC rating: C
Lease length: Minimum term 6 months

£15,000 per week

TO LET

These particulars do not form part of any offer or contract and must not be relied upon as statements or representations of fact. Any areas, measurements or distances are approximate. The text, photographs and plans are for guidance only and are not necessarily comprehensive. It should not be assumed that the property has all the necessary planning, building regulation or other consents and we have not tested any services, equipment or facilities. Purchasers must satisfy themselves by inspection or otherwise.

Breteuil

REMARKABLE HOMES

PRINCES GATE

57A Princes Gate, SW7

Gross internal area (approx.)

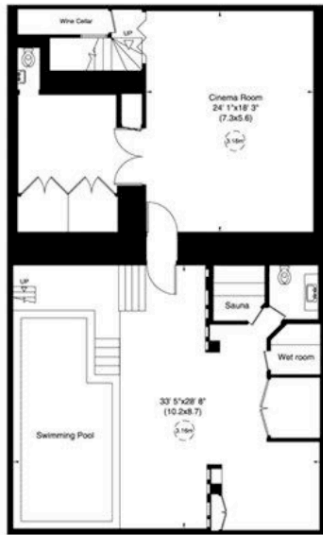
668 Sq m (7187 Sq ft)

For identification only. Not to Scale

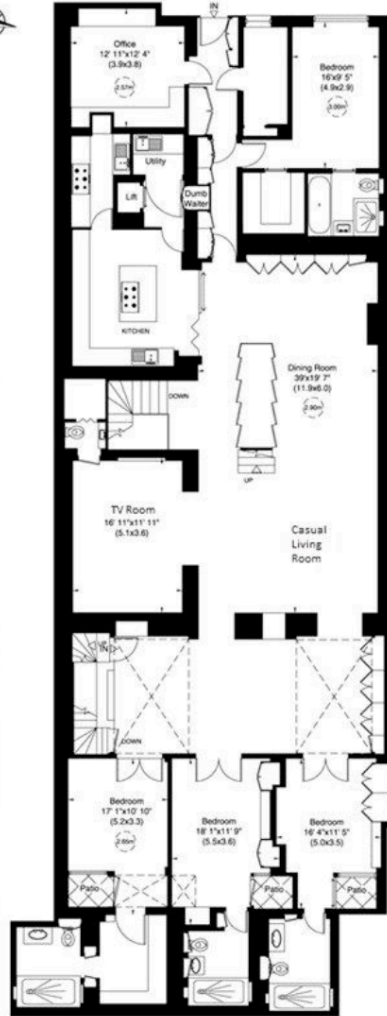
Floor Plan by **capital group** 020 9671 7722

ATTENTION HARRIET

Please check room names and then email to:
sue@capital-group.co.uk



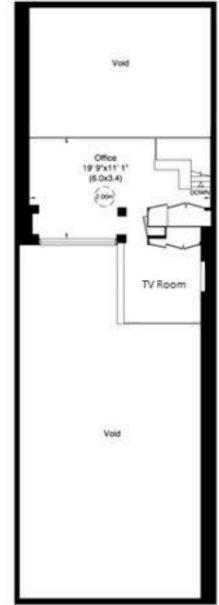
Basement



Lower Ground Floor



Ground Floor



Mezzanine

Not to scale, for guidance only and must not be relied upon as a statement of fact. All measurements and areas are approximate only (and have been prepared in accordance with the current edition of the RICS Code of Measuring Practice).

£15,000 per week

TO LET

These particulars do not form part of any offer or contract and must not be relied upon as statements or representations of fact. Any areas, measurements or distances are approximate. The text, photographs and plans are for guidance only and are not necessarily comprehensive. It should not be assumed that the property has all the necessary planning, building regulation or other consents and we have not tested any services, equipment or facilities. Purchasers must satisfy themselves by inspection or otherwise.

Breteuil

REMARKABLE HOMES