



HOPKINS & DAINTY

ESTATE AGENTS



Hastings Park, Coalville, LE67 3SH

£310,000

OPEN 7 DAYS A WEEK - HOPKINS & DAINTY of TICKNALL are pleased to offer THE ALFORD. A BRAND NEW DAVIDSONS HOME on the popular HASTINGS PARK development in Hugglescote.

The ALFORD is a 3 bedroom detached house with a single integral garage. Comprising entrance hall, lounge, kitchen/diner, utility room and WC to the ground floor. On the first floor there are 3 double bedrooms, an en-suite shower room and family bathroom with a four piece suite. Rear garden laid to lawn with a paved patio area. New build with 10 year NHBC guarantee, Gas central heating and Double Glazing.

Please be aware that the photos shown maybe from another version of this house, on the same development and not the actual plot for sale.

If you would like to see this home for yourself, feel free to let us know when you are available. We are open 7 days a week.

Entrance Hall

Lounge 15'8" x 10'11" (4.80 x 3.35)



Master Bedroom 14'3" x 12'5" (4.35 x 3.81)



En-Suite 7'8" x 6'6" (2.35 x 1.99)



Kitchen/Diner 14'3" x 12'4" (4.35 x 3.78)



Bedroom 2 12'11" x 8'8" (3.95 x 2.66)



Utility Room 5'4" x 5'1" (1.65 x 1.56)



Bedroom 3 13'3" x 8'5" (4.06 x 2.57)



Guest WC



Bath/Shower room 9'8" x 5'6" (2.95 x 1.70)



First Floor Landing



Parking

Garage

Garden



DAVIDSONS HOMES

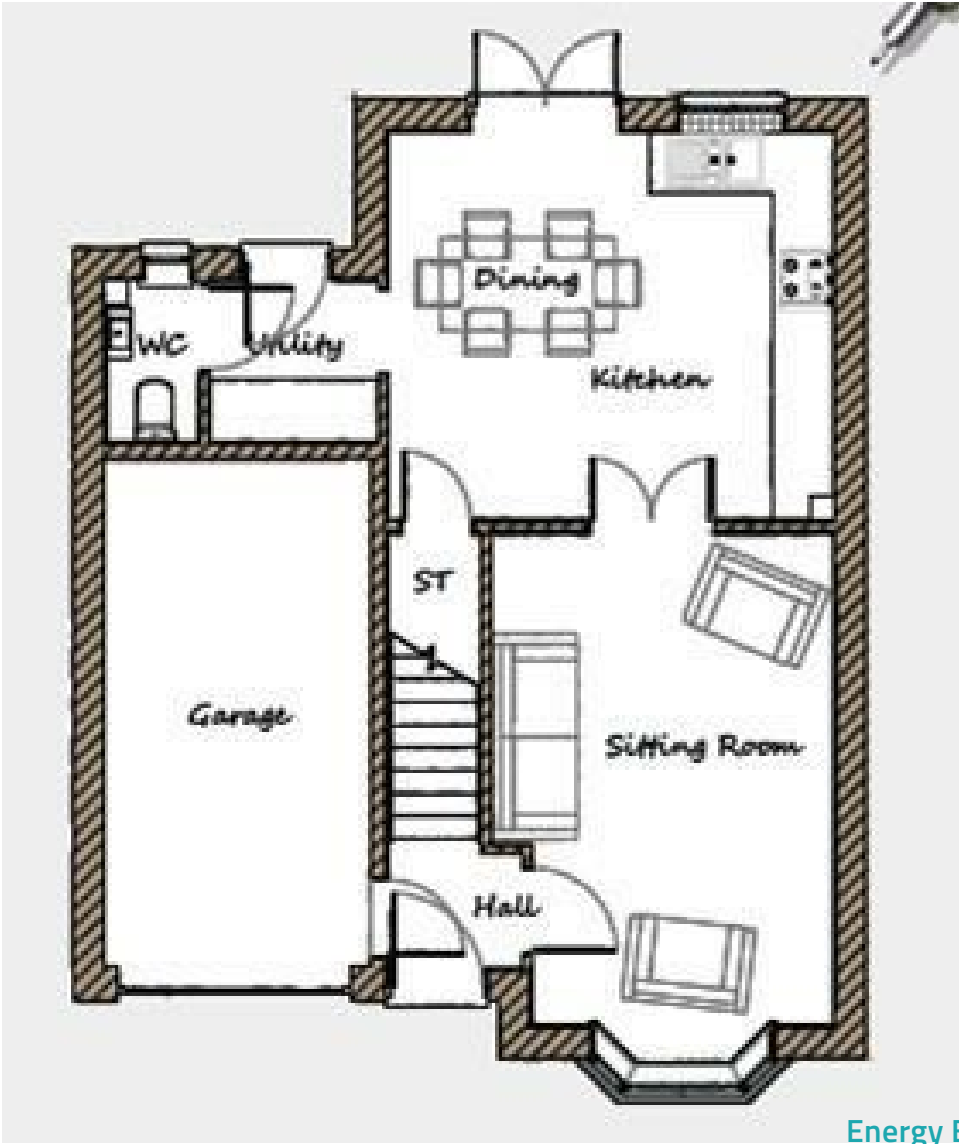
Please note images and descriptions are for representative purposes only. Davidsons Homes reserve the right to make amendments. For further information please contact the Sales Manager.

Reservation fees apply.

Important Information

These sales details are produced in good faith with the approval of the vendors and are given as a guide only. If there is any point which is of specific importance to you, please check with us first, particularly if travelling some distance to view the property. Please note that we have not tested any of the appliances or systems at this property and cannot verify them to be in working order. Unless otherwise stated fitted items are excluded from the sale, such as carpets, curtains, light fittings and sheds. These sales details, the descriptions and the measurements therein do not form part of any contract and whilst every effort is made to ensure accuracy this cannot be guaranteed. Nothing in these details shall be deemed to be a statement that the property is in good structural condition or otherwise. Purchasers should satisfy themselves on such matters prior to purchase. Any areas, measurements or distances are given as a guide only. Photographs are taken with a wide angle digital camera. Nothing herein contained shall be a warranty or condition and neither the vendor or ourselves will be liable to the purchaser in respect of any mis-statement or misrepresentation made at or before the date hereof by the vendor, agents or otherwise. Any floor plan included is intended as a guide layout only. Dimensions are approximate. Do Not Scale.

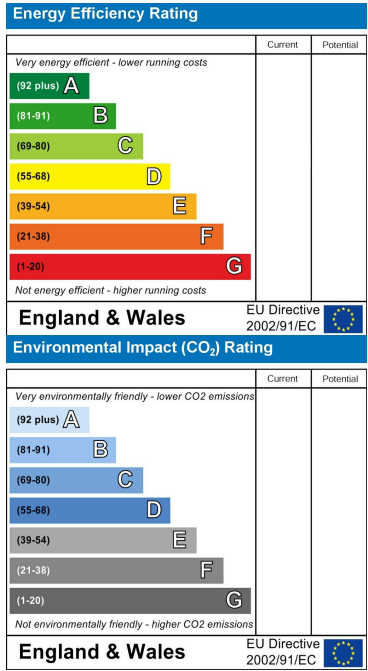
Floor Plan



Area Map



Energy Efficiency Graph



These particulars, whilst believed to be accurate are set out as a general outline only for guidance and do not constitute any part of an offer or contract. Intending purchasers should not rely on them as statements of representation of fact, but must satisfy themselves by inspection or otherwise as to their accuracy. No person in this firms employment has the authority to make or give any representation or warranty in respect of the property.