



Symonds
& Sampson

Old Chapel
High Street, Hinton St. George

Old Chapel

High Street
Hinton St. George
TA17 8SE

A stunning light-filled chapel conversion, set in grounds of 0.26 acres (0.10 hectares) and dating back to around 1875 in what is arguably South Somerset's prettiest street scene.



- Former chapel conversion dating back to around 1875
- Beautiful gardens extending to almost 150ft at the rear
- Spacious living room with shaker style panelling and open fireplace
 - Additional veranda for outside entertaining
 - Gas central heating
 - Many period features
- Set in a picturesque street with village amenities close at hand



Offers in excess of £750,000

Freehold

Ilminster Sales
01460 200790

ilminster@symondsandsampson.co.uk

THE DWELLING

Set in the picturesque high street, this former chapel, dating back to around 1875, offers unique, character accommodation over two spacious floors and opens onto a beautiful and generous garden at the rear. Retaining the grandeur of its ecclesiastical origins with beautiful window openings and high ceilings, it manages to maintain a homely feel throughout.

THE ACCOMMODATION

The front of the property is set back from the pretty street scene by way of an attractive front garden with clipped trees and cottage garden borders, edged with original cast iron railings. The front door is accessed via a charming porch, but on a day-to-day basis, you are likely to use the alternative side entrance. As you step inside, you are greeted by the charm and elegance of this unique home. You enter into a practical and spacious hall with built-in storage, ensuring the space remains clutter-free.

Across the hall, the quarry-tiled floor flows into a generous boot room/utility area, complete with a ceramic butler sink, ample space for white goods, and the new gas central heating boiler. A separate WC provides an extra set of facilities downstairs. The living room, situated at the front of the property, is a stunning dual-aspect space with period shaker-style panelling typical of the era and a stone chimney breast. This room provides the unusual opportunity to enjoy a real fire, adding a cosy and authentic touch to the conversion. Those who love a talking point will be thrilled with the discreet trap door underfoot. Look beneath and the original full body font is still in situ, perhaps the ideal spot for a vintage bottle or two?

From the hall, a beautiful stained glass door opens into a large, sociable kitchen and living space. This area is perfect for entertaining and for those who enjoy cooking and chatting. There is more than enough space for even the largest dining tables, with the open-plan layout flowing seamlessly into the dining area, and to the corner is a further feature modern gas stove (currently not in use). Presently with a range of freestanding units and dressers (potentially available at separate negotiation) this gives a new owner the chance to add their own freestanding pieces or choose their own fitted kitchen if they prefer. The units remaining will however include a double bowl single drainer ceramic sink unit, and incorporate space for both a dishwasher and an upright fridge freezer.

The property has been sympathetically extended at the rear with a beautiful garden room. This wonderfully light and usable space, featuring a triple aspect over the garden via windows, doors, and a glass roof, flows naturally from the dining area. The garden room offers a serene and bright atmosphere, making it an ideal spot for relaxation and enjoying the garden views.





On the first floor, the master bedroom truly has the WOW factor. The original windows with their stunning stained glass inserts sweep across the front elevation, letting in ample southerly light and offering a beautiful view of the picturesque street. There is a generous array of built-in storage cupboards and wardrobes on one side, and the solid wood flooring extends from the landing, enhancing the period feel. The adjoining en suite is attractively fitted with stone-effect ceramic tiling, giving it a timeless and neutral look. The suite includes a spacious corner shower, WC, and wash hand basin. The spacious landing provides access to the loft via a hatch and features an airing cupboard with a hot water cylinder and shelving for your linens.

A lower landing leads to three additional well-sized bedrooms, two of which offer equally lovely views of the rear gardens. The family

bathroom, located off the main landing, features tongue and groove paneling that adds to the heritage aesthetic. The bathroom includes a white suite with beautiful Fired Earth moorish tiles, a freestanding bath and period shower handset, a heritage-style wash hand basin, WC, and a chrome ladder towel radiator.

OUTSIDE

As well as the pretty frontage, edged with the original cast iron railings and gate, the side pathway widens to allow access through double timber gates to the rear garden. A flagstone patio extends across the back of the property, adjacent to the garden room and featuring a charming open veranda perfect for alfresco dining. A stone retaining wall includes steps leading up to the spacious garden, which extends almost 150 feet in length and is enclosed by timber fencing and mature hedgerows. Dotted with specimen trees, the garden is

primarily laid to lawn, offering a tranquil haven that both keen gardeners and active families will love.

SITUATION

Hinton St George is generally regarded as one of the most sought-after villages in the area. The pretty village centre is a real gem, with its mellow honey-coloured stone properties and much of it is designated a Conservation Area. The house is within 5 minutes walk of the lovely multi-award winning pub "The Lord Poulett Arms", excellent community run village shop, and a small and well-respected Primary School and Pre-School. The surrounding countryside offers plenty of public footpaths and bridleways, and the village has its very own Jubilee Wood, with over 3000 trees, shrubs and apple trees. Hinton St George lies within easy reach of the market town of Crewkerne with its mainline station and Waitrose supermarket. The A30 and A303 are also within c.5-10 minutes' drive of the property.



SERVICES

Mains electricity, gas, water and drainage are connected.

Superfast broadband is available in the area. Although mobile signal indoors may be limited or unavailable from some providers, a mobile signal outdoors at the property is likely from all four major networks. The vendor informs us that they are able to get mobile signal inside from EE and Vodafone,

MATERIAL INFORMATION

Somerset Council - Band E

As is common, the register includes mention of various covenants. The office is happy to supply a copy of the title register on request if a

prospective buyer would like to make further enquiries prior to booking a viewing.

The neighbouring cottage will retain an occasional right of way at the rear via a removable fence panel. Please ask us for further information.

The property is located in a designated conservation area.



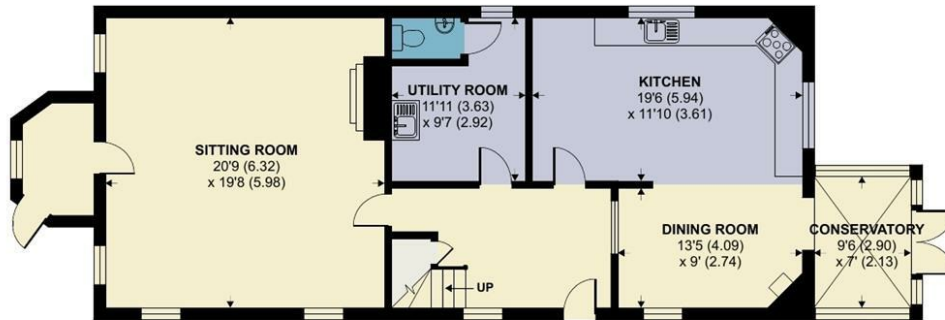
Energy Efficiency Rating		Current	Potential
Very energy efficient (lower ranking costs)	A		
Energy efficient	B		79
Decent	C	57	
Needs improvement	D		
Low energy efficiency (higher ranking costs)	F		
Very low energy efficiency (higher ranking costs)	G		
England & Wales		EU Directive 2002/91/EC	

Hinton St. George

Approximate Area = 2234 sq ft / 207.5 sq m
For identification only - Not to scale



FIRST FLOOR



GROUND FLOOR



Floor plan produced in accordance with RICS Property Measurement Standards incorporating International Property Measurement Standards (IPMS2 Residential). © ncthemcom 2024. Produced for Symonds & Sampson. REF: 1152294



Ilm/KS/230724



naei | propertymark
PROTECTED

www.
the
londonoffice.co.uk
40 ST JAMES'S PLACE SW1

01460 200790

ilminster@symondsandsampson.co.uk
Symonds & Sampson, 21 East Street,
Ilminster, Somerset TA19 0AN



Important Notice: Symonds & Sampson LLP and their Clients give notice that: 1. They have no authority to make or give any representations or warranties in relation to the property. These particulars do not form part of any offer or contract and must not be relied upon as statements or representations of fact. 2. Any areas, measurements or distances are approximate. The text, photographs and plans are for guidance only and are not necessarily comprehensive. It should not be assumed that the properties have all necessary planning, building regulation or other consents and Symonds and Sampson LLP have not tested any services, equipment of facilities. 3. We have not made any investigation into the existence or otherwise of any issues concerning pollution of the land, air or water contamination and the purchaser is responsible for making his/her own enquiries in this regard. 4. The property is sold subject to and with the benefit of all existing wayleaves, easements and rights of way whether public or private, specifically mentioned or not. The vendors shall not be required to define any such rights, privileges or advantages.

SALES | LETTINGS | AUCTIONS | FARMS & LAND | COMMERCIAL | NEW HOMES | PLANNING & DEVELOPMENT