



lettingInternational



737B Eastern Avenue

, Ilford, IG2 7RT

£1,400 Per Month



1



1



1



C

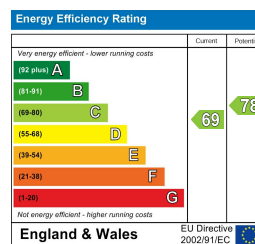




## Area Map

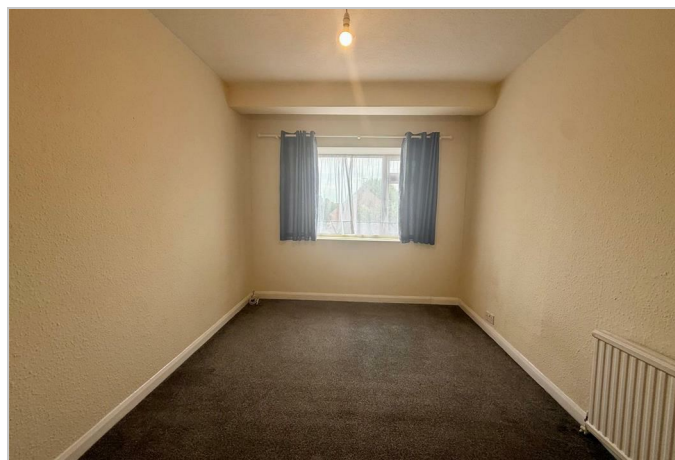
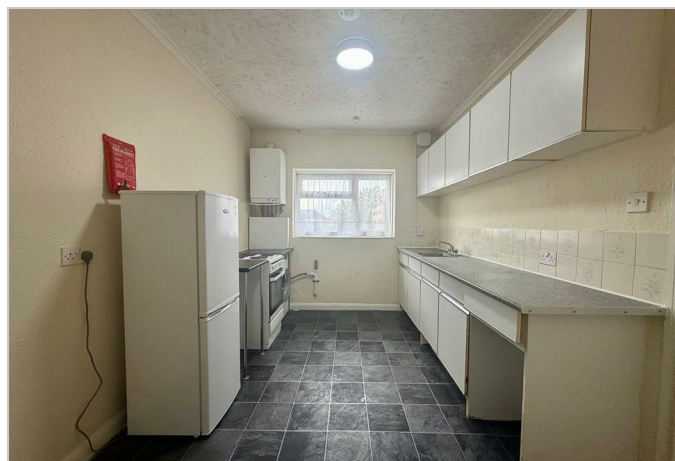


## Energy Efficiency Graph



## Viewing

Please contact our Office on 0208 554 9999 if you wish to arrange a viewing appointment for this property or require further information.



Spacious 1 Bedroom Flat to Rent – Eastern Avenue, Newbury Park – Recently Renovated

### Key Features:

- Large double bedroom
- Bright and spacious open-plan living area
- Recently refurbished and renovated throughout
- Modern fitted kitchen and bathroom
- Excellent location on Eastern Avenue
- Just 2 minutes' walk to Newbury Park Station (Central Line)
- Great access to local shops and amenities
- Available immediately

### Property Description:

A well-presented and spacious 1 bedroom flat located on Eastern Avenue, just a 2-minute walk from Newbury Park Station, offering direct Central Line access to Stratford and Central London.

The property has been recently refurbished and finished to a modern standard throughout. It features a

These particulars, whilst believed to be accurate are set out as a general outline only for guidance and do not constitute any part of an offer or contract. Intending purchasers should not rely on them as statements of representation of fact, but must satisfy themselves by inspection or otherwise as to their accuracy. No person in this firm's employment has the authority to make or give any representation or warranty in respect of the property.

332 - 336 Perth Road, Ilford, Essex, IG2 6FF

Tel: 02085549999 Email: [sales@lintgroup.com](mailto:sales@lintgroup.com) [www.lettinginternational.com](http://www.lettinginternational.com)