



lettingInternational



1, Gateway Court 5-7 Parham Drive

, Ilford, IG2 6LZ

Offers Over £335,000



2



2



1



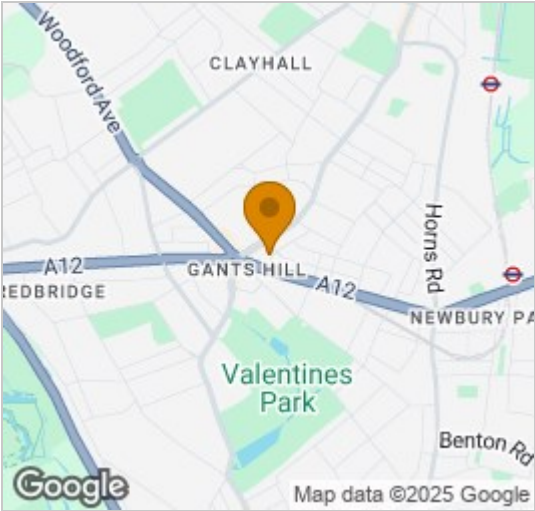
C



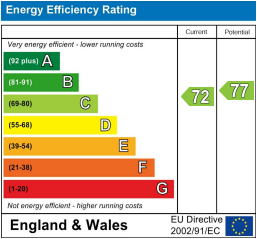
Floor Plan



Area Map



Energy Efficiency Graph



Viewing

Please contact our Letting International LTD Office on 02085549999 if you wish to arrange a viewing appointment for this property or require further information.



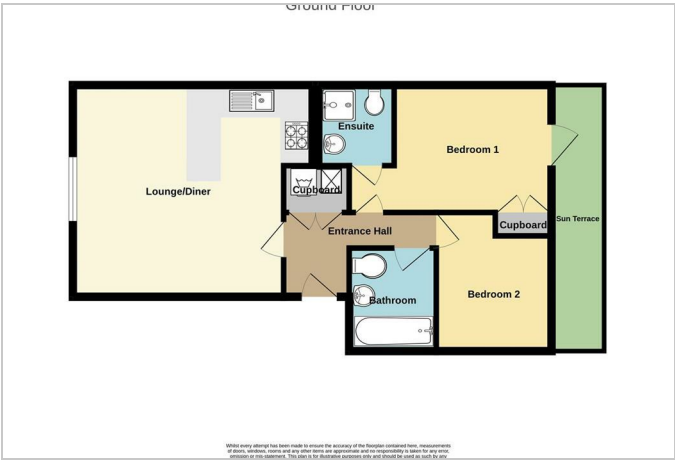
2 Bedroom Ground Floor Flat – Gateway Court, Parham Drive, IG2

Welcome to this well-presented two-bedroom, two-bathroom ground floor flat, ideally situated in the sought-after Gateway Court development on Parham Drive, IG2.

This spacious home features a modern open-plan kitchen and living area, perfect for entertaining and everyday living. The property offers two generously sized bedrooms, with the primary bedroom benefiting from a stylish en-suite. A second bathroom serves the remaining rooms, providing convenience and comfort for residents and guests alike. This property is one of 4 in the whole building which boasts its own small back yard !

Located just a 2-minute walk from Gants Hill Station (Central Line), commuting to Central London and beyond is effortless. The property is also ideally positioned adjacent to the A12, offering excellent road links across East London and Essex.

Local amenities include a wide range of restaurants, cafés, supermarkets, and retail outlets, all within walking distance. You'll also find several reputable schools, parks, and fitness centres nearby, making it a desirable choice for professionals, couples, or small families.



These particulars, whilst believed to be accurate are set out as a general outline only for guidance and do not constitute any part of an offer or contract. Intending purchasers should not rely on them as statements of representation of fact, but must satisfy themselves by inspection or otherwise as to their accuracy. No person in this firm's employment has the authority to make or give any representation or warranty in respect of the property.