



lettingInternational



183a Plashet Grove

, London, E6 1BX

£280,000



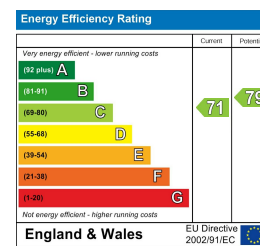
## Floor Plan



## Area Map



## Energy Efficiency Graph



## Viewing

Please contact our Letting International LTD Office on 02085549999 if you wish to arrange a viewing appointment for this property or require further information.



Situated in an ideal locale with excellent access to transportation, shopping, and recreational options, this two-bedroom flat offers convenience and practicality, a serene environment for relaxation and play, making it an appealing feature, especially for families.

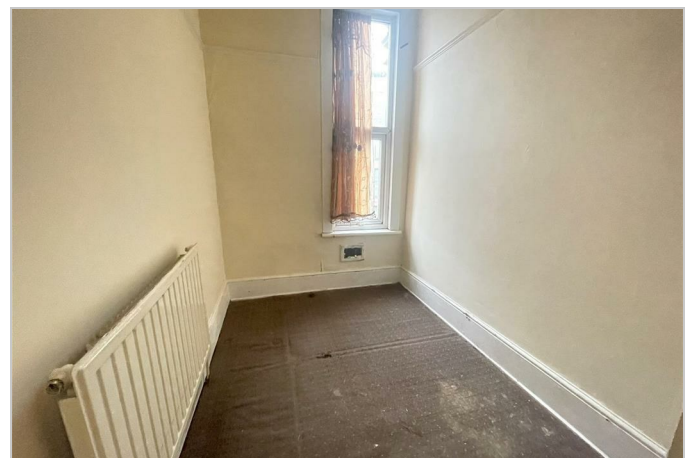
This first-floor residence, nestled in the heart of Upton Park, is just minutes away from Green Street, Queens Market, and the highly coveted Central Park. Its prime location makes it a great choice for those seeking a starter home or considering it for Buy-to-Let purposes. The abundance of local amenities ensures that the needs and desires of new occupants are well catered to.

The remaining lease term is 54 years

Service Charge: TBC

Ground Rent: TBC

Lease will be extended



These particulars, whilst believed to be accurate are set out as a general outline only for guidance and do not constitute any part of an offer or contract. Intending purchasers should not rely on them as statements of representation of fact, but must satisfy themselves by inspection or otherwise as to their accuracy. No person in this firm's employment has the authority to make or give any representation or warranty in respect of the property.

332 - 336 Perth Road, Ilford, Essex, IG2 6FF

Tel: 02085549999 Email: sales@lintgroup.com www.lettinginternational.com