

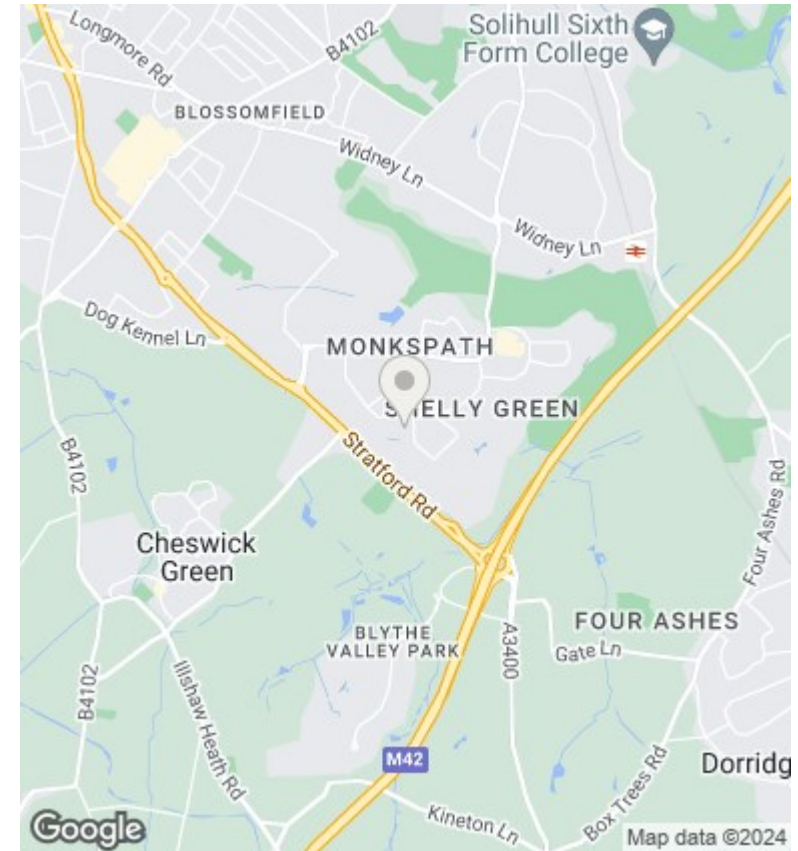
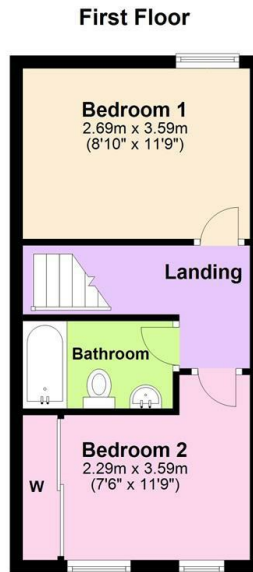
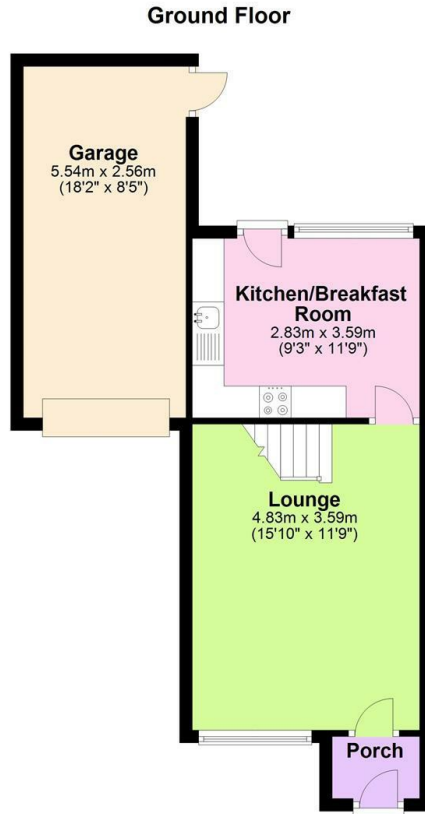
# Horton & Senate



8 Rochford Court, Monkspath, Solihull, B90 4XJ

£319,950

- Two Bedroom Semi Detached
- Off Road Parking
- Modern And Well Presented Throughout
- Ideal For First Time Buyers
- Single Garage
- Sought After Location



## Directions

## Viewings

Viewings by arrangement only. Call 0121 6630099 to make an appointment.

## Council Tax Band

C

## EPC Rating:

C

Energy Efficiency Rating		
	Current	Potential
Very energy efficient - lower running costs		
(92 plus) <b>A</b>		89
(81-91) <b>B</b>	73	
(69-80) <b>C</b>		
(55-68) <b>D</b>		
(39-54) <b>E</b>		
(21-38) <b>F</b>		
(1-20) <b>G</b>		
Not energy efficient - higher running costs		
<b>England &amp; Wales</b>	EU Directive 2002/91/EC	