

Horton & Senate



29 Millison Grove, Shirley, Solihull, B90 4UN

£659,950

- Five Bedroom Detached
- Generous Rear Garden
- Double Garage
- Study
- En Suite To Master Bedroom
- No Upward Chain
- Large Kitchen & Utility Area
- Downstairs WC
- Two Receptions
- Sought After Location

29 Millison Grove, Solihull B90 4UN

Welcome to this stunning detached house located in the desirable Millison Grove, Shirley, Solihull. This property boasts two spacious reception rooms, perfect for entertaining guests or relaxing with the family. With five bedrooms and two bathrooms, there is ample space for everyone in the household.

One of the highlights of this property is the through lounge, providing a seamless flow between the living spaces. Additionally, the double garage offers convenient parking for two vehicles, ensuring you never have to worry about finding a parking spot.

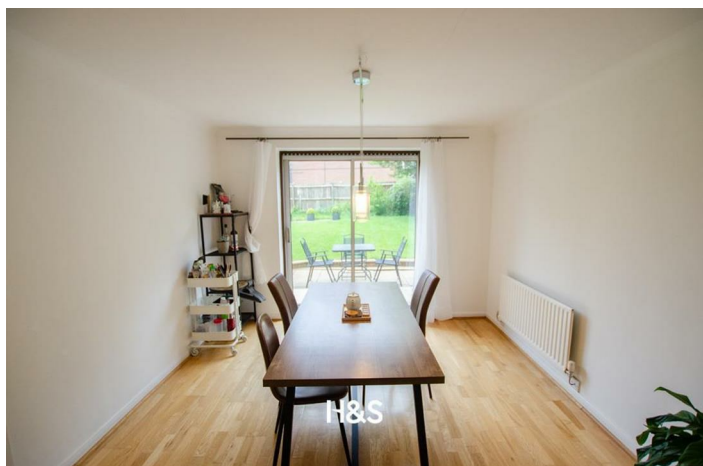
For those who work from home or enjoy a quiet space to study, the downstairs study provides the ideal environment. Imagine looking out of your window and enjoying the picturesque views of Hillfield Park, creating a serene and peaceful atmosphere.

Conveniently located near the M42 motorway, commuting to work or exploring the surrounding areas is a breeze. You'll also find a variety of local amenities just a stone's throw away, making daily errands and shopping trips effortless.

Don't miss out on the opportunity to make this beautiful property your new home. Contact us today to arrange a viewing and experience the charm and comfort this house has to offer.



Council Tax Band: F



Description

Approach

Via driveway with space for several vehicles, front lawn with mature bushes and shrubs. Access to the double garage.

First floor

Hallway

Reception hallway with doors to all ground floor rooms and stairs to the first floor.

Study

2.29m x 2.35

A double glazed window to the front elevation, a central heating radiator.

WC

WC and wash basin.

Kitchen

3.38m x 5.27m

A range of wall and floor based units, integrated appliances including dishwasher, oven, gas hob and extractor fan. Inset sink with mixer tap. Two double glazed windows to the rear elevation.

Utility area

Plumbing for a washing machine. Door leading to the rear garden.

Living room

5.25m x 4.04m

Central heating radiator, a double glazed window to the front elevation.

Dining room

3.41m x 3.34m

Central heating radiator, patio doors leading to rear garden. Door to the kitchen.

Double garage

5.25m x 5.24m

Rear Garden

Slabbed patio area. Generous sized lawn with mature bushes and shrubs to the borders.

First floor

Landing

Doors to first floor rooms. Access to the loft. Storage cupboard.

Bedroom one

3.28m x 3.87m

Double bedroom with a double glazed window to the front elevation. A central heating radiator.

En suite

Fully tiled floor and walls, a walk in corner shower, WC, wash basin and heated towel rail. Double glazed window to the side elevation.

Bedroom two

2.79m x 3.54m

Double bedroom with a double glazed window to the front elevation. A central heating radiator.

Bedroom three

3.41m x 3.33m

Double bedroom with a double glazed window to the rear elevation. A central heating radiator.

Bedroom four

3.41m x 2.53m

Double bedroom with a double glazed window to the rear elevation. A central heating radiator.

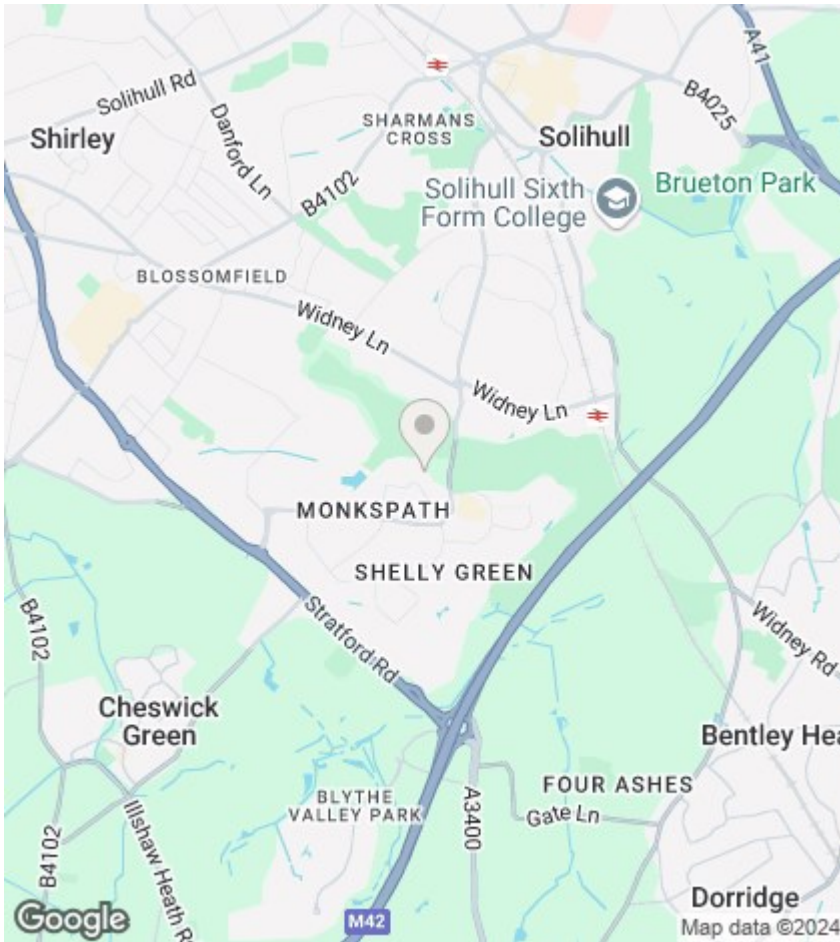
Bedroom five

3.41m x 2.81m

Double bedroom with a double glazed window to the rear elevation. A central heating radiator.

Bathroom

Fully tiled floor and walls, a panelled bath with shower over, WC, wash basin and central heating radiator. Double glazed window to the side elevation.



Directions

Viewings

Viewings by arrangement only. Call 0121 6630099 to make an appointment.

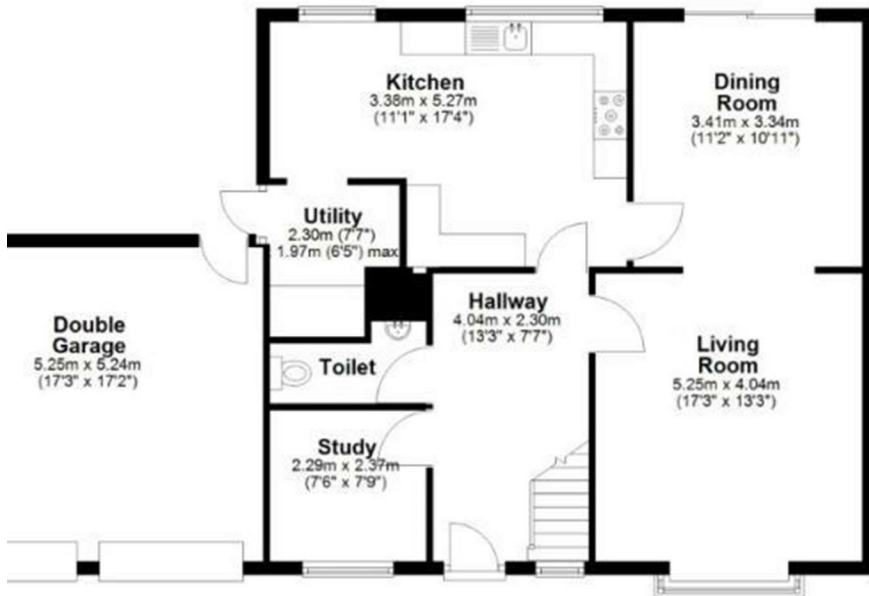
EPC Rating:

C

Energy Efficiency Rating		Current	Potential
Very energy efficient - lower running costs			
(92 plus)	A		
(81-91)	B		81
(69-80)	C	70	
(55-68)	D		
(39-54)	E		
(21-38)	F		
(1-20)	G		
Not energy efficient - higher running costs			
England & Wales		EU Directive 2002/91/EC	

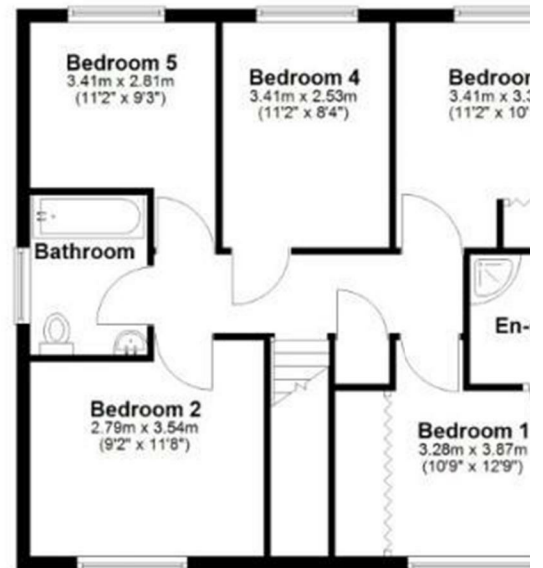
Ground Floor

Approx. 97.9 sq. metres (1054.1 sq. feet)



First Floor

Approx. 71.9 sq. metres (774.0 sq. feet)



Total area: approx. 169.8 sq. metres (1828.1 sq. feet)