





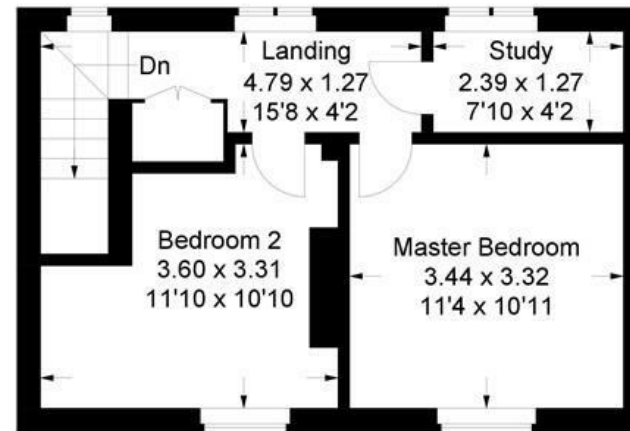
This charming two-bedroom Grade 2 listed cottage is conveniently located with easy access to Havant's amenities and commuter links. The property features a spacious lounge with wooden flooring, creating a warm and inviting living space. The modern kitchen is well-equipped with a gas hob, electric oven, plumbing for a washing machine, and space for a fridge/freezer.

- Grade 2 Listed Cottage
- 2 Bedrooms and Office
- Kitchen and Separate Lounge
- Convenient Havant Location
- Characterful Property
- Allocated Parking

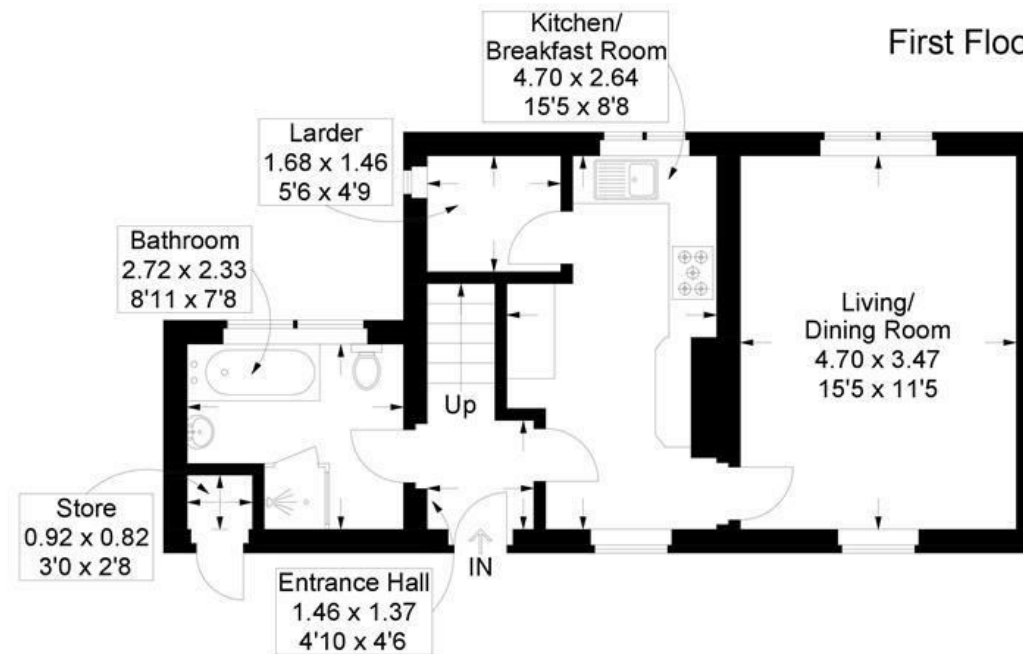


Elmleigh House, Leigh Road, Havant

Approximate Gross Internal Area = 76.9 sq m / 827 sq ft



First Floor



Ground Floor

This plan is for layout guidance only. Not drawn to scale unless stated. Windows and door openings are approximate. Whilst every care is taken in the preparation of this plan, please check all dimensions, shapes and compass bearings before making any decisions reliant upon them.