



GILES CLOSE

YAPTON



Asking Price Of £250,000
Yapton

T: 02392295046
W: nexaproperties.com
E: Jon@nexaproperties.com



- RECENTLY REFURBISHED
- 3 BEDROOMS
- END OF TERRACE
- LARGE REAR GARDEN
- NEW BATHROOM
- HUGE GARDEN WORKSHOP
- KITCHEN DINER WITH BREAKFAST BAR
- TREE LINED GREEN TO FRONT
- AMPLE LOCAL PARKING
- VENDORS HAVE ALREADY FOUND

Jon at NEXA Chichester is pleased to bring to market this lovely family home in Yapton.

Well proportioned and well presented, this 3 bed end of terrace house offers ample living space with a smart finish.





DESCRIPTION

Jon at NEXA Chichester presents this very well presented 3 bedroom end of terrace house opposite an attractive tree lined green. This ideal family home is surrounded by green spaces offering a safe haven for children to play and pets to roam! The house itself has recently been refurbished throughout including new carpets, family bathroom and redecoration. The downstairs is made up of a large living room, kitchen/diner with breakfast bar and space for a dining table, and a handy cloakroom. The wide entrance hall and stair way lead to the first floor which plays host to two double bedrooms, the newly refurbished family bathroom with stand alone shower and bath and a further single bedroom.

Register your interest early with Jon @ NEXA Chichester







THE PROPERTY




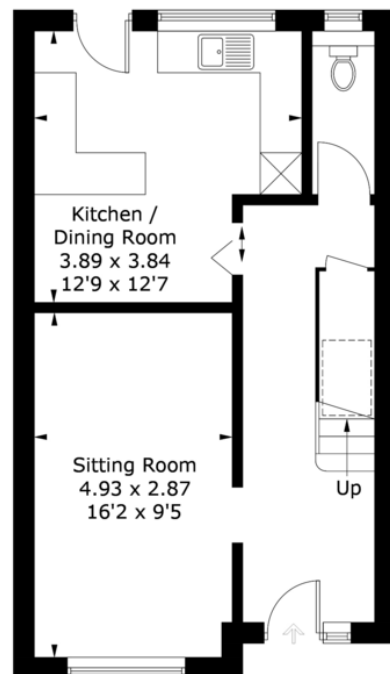


9 Giles Close, BN18 0LG

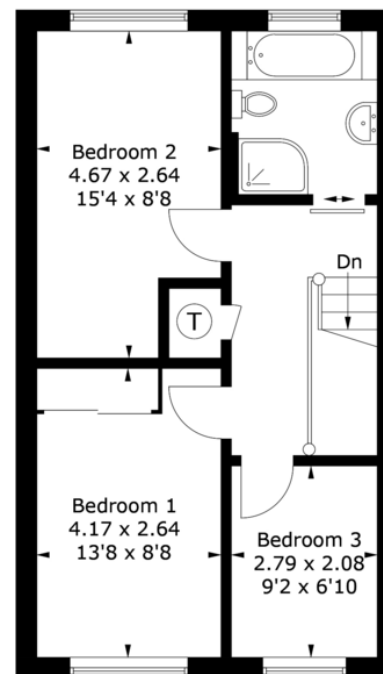
Approximate Gross Internal Area = 87.3 sq m / 940 sq ft



 = Reduced headroom below 1.5m / 5'0



Ground Floor



First Floor

PRODUCED FOR NEXA PROPERTIES

Whilst every attempt has been made to ensure the accuracy of the floorplan, measurements of doors, windows and rooms are approximate. These plans are for representation purposes only as defined by RICS Code of Measuring Practice and used as such by any prospective purchaser. (ID761624)

FLOORPLAN



WHY CHOOSE NEXA?

We are a different type of estate agency. We provide you with a **local industry professional** to act as your **dedicated account manager** who will be your **single point of contact**. This means you only ever deal with **one agent** and you receive a **seamless and transparent solution**.

Our unique business model rewards our account managers on a highly competitive **results-based structure** that enables us to source the best people for the job and create a **better experience** for you, and a more **rewarding and motivating** experience for our staff.

Your account manager is **personally assigned** to you and will provide a **personal service** from start to finish throughout the entire journey, **available any time of day**, enabling us to create a **high-performance culture** and a **customer-centric** estate agency.



NEED A MORTGAGE?

We work closely with a small, handpicked selection of professional mortgage brokers who can help you find the right mortgage. There are some great deals out there and a good mortgage broker can help you find them, whilst also revealing the loopholes and limitations that apply. This will help to ensure that you find the best lender and agreement for your particular circumstances and plans. Talk to your Nexa Agent and they will arrange your meeting with one of our excellent mortgage brokers.

NEED A SOLICITOR?

Having worked in property for many years here in Portsmouth, we have been fortunate enough to build relationships with a number of excellent legal firms and solicitors that specialise in property transactions and contracts. We now work closely with these firms to ensure that our clients have access to the best legal support available in the City. Simply talk to your Nexa agent who will help you find the best solicitor for your needs.





T: 02392295046
W: [nexaproperties.com](https://www.nexaproperties.com)
E: hello@nexaproperties.com

