



WATERHOUSE
ESTATE AGENTS
Local, Professional Property Services

62 Windermere Road - Carnforth





Features

- Three bedrooms
- Driveway parking for 1 / 2 vehicles
- Good sized gardens
- Impressive, un-interrupted rear views over countryside
- Offered with no onward chain
- Opportunity to add value and put your own stamp on the property

Nestled in the heart of Carnforth, this three bedroom terraced house is offered with no onward chain and offers spacious accommodation with countryside charm. With its spacious interior and generous outdoor space, this property offers an ideal home for families, first-time buyers, or those seeking a quieter pace of life. The ground floor benefits from a separate hallway, a dual aspect living room and a good sized kitchen/ diner with a walk-in pantry cupboard. Each bedroom is well-proportioned, providing ample space for family living, guests, or even as a home office setup if required. The bright and airy interiors create a warm and welcoming atmosphere throughout. There is a separate WC and a separate two piece bathroom,

both enjoying natural light. A rare find in many terraced properties, this home offers private parking for one/ two vehicles, ensuring easy access and convenience for homeowners and visitors alike. The generous rear garden offers plenty of space for outdoor activities, gardening, or simply for relaxing in the sun with wonderful open views out over countryside. The garden also benefits from an outhouse, providing additional storage or the opportunity for a workshop or hobby space. Carnforth offers a wide range of independent shops, pubs, cafés and supermarkets with both a cricket club and rugby club and three golf clubs to enjoy nearby. Three primary schools and a high school are

located within the town and Lancaster and Preston are a short drive away and offer outstanding universities. Lancaster, Morecambe and the M6 motorway are a short distance away bringing the Lake District, the Trough of Bowland and the larger cities of Manchester and Liverpool within easy reach. The wonderful Warton Crag overlooks Carnforth and offers various nature walks along with beautiful walks along the Lancaster canal and the RSPB's Leighton Moss Nature Reserve in Silverdale is a year-round haven for bird-life.



GROUND FLOOR

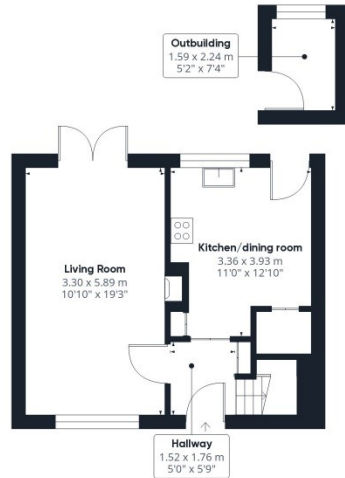
Hallway
A bright entrance into the home with space to remove shoes and coats with a built-in cupboard for storage.

Living room
A wonderful room bursting with natural light and spanning the whole depth of the home. French doors to one end of the room open up to reveal the good sized rear garden beyond, perfect for letting the outdoors, in. There is space here for all the family to gather and relax with a gas effect fireplace to add a cosy touch to the room.

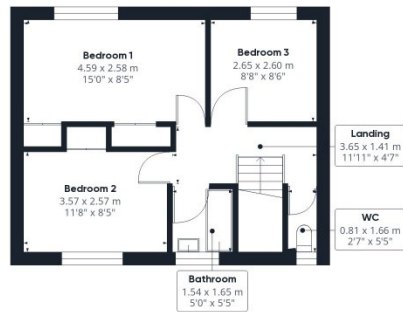
Kitchen/ dining room
A well appointed kitchen with wooden farmhouse style base and wall units and lighter work surfaces. Integrated appliances include an oven, 4 ring gas hob with extractor hood above and a dishwasher. A deep pantry cupboard offers room for additional storage and larger household contents/ appliances with fitted shelving present. A door leads out to the rear garden and there is room for a dining table.



62 Windermere Road - Carnforth



Ground Floor



Floor 1



Approximate total area⁽¹⁾

79.69 m²
857.78 ft²

(1) Excluding balconies and terraces

While every attempt has been made to ensure accuracy, all measurements are approximate, not to scale. This floor plan is for illustrative purposes only.

Calculations are based on RICS IPMS 3C standard.

GIRAFFE360

Waterhouse Estate Agents

10 Park Road, Milnthorpe
LA7 7AD

Tel: 01524 760048

info@waterhousestates.co.uk

www.waterhousestates.co.uk



**WATERHOUSE
ESTATE AGENTS**

Local, Professional Property Services

All rooms have been measured with electronic laser and are approximate measurements only. None of the services to the above property have been tested by ourselves, and we cannot guarantee that the installations described in the details are in perfect working order. Waterhouse Estate Agents for themselves, and for the vendors or lessors, produce these brochures in good faith, and are a guideline only. They do not constitute any part of a contract and are correct to the best of our knowledge at the time of going to press.