

Why use S J Smith Estate Agents? Here's some of our reviews to tell you why!

Hours: 8am–7pm Monday to Friday, 8am-5pm Saturday and 10am-2pm Sunday.
Phone: Ashford 01784 243 333 – Staines 01784 779 100
Email: ashford@sjsmithestateagents.co.uk - staines@sjsmithestateagents.co.uk



Sajid Abbasi

I have used SJSmith Estate agents for last 7 years, both as buyer and landlord. They always come across as professional, courteous, and understanding to customer's needs. I continue to use their services and have no complaints.



Abigail P

Our overall experience with s j smith has been great. Everyone we have dealt with has been brilliant and can't thank you enough especially Nicola who has kept us updated and constantly chased the chain for us after a difficult chain and original one falling through. Thank you!!



Robert Boyce

Great service from Amir and the team! We tried to sell through an online agent with no success.... We signed up with SJSmith and then 3 days later we had an offer! Highly recommend!



Lincoln Williamson

My partner and I recently bought our first home from S J Smith and from start to finish they were excellent. From arranging a viewing, to keeping us updated throughout the whole process and being able to answer all our questions and queries in a very timely manner. There was a number of difficulties with the sale, however Nicola went above and beyond in helping these difficulties get resolved, keep us in the loop, offer support and guidance and ensure that the sale happened as quick as possible. If not for Nicola, I honestly don't think the sale would have gone ahead! Thank-you Nicola and thank you S J Smith!



Katie Jameson

Great service, kept up to date throughout the whole process as the first time selling a home.



Louise Cambray

We bought and sold through SJ Smith and can't recommend them enough. Everyone at the office is great but we knew we were in safe hands with Louis from the off. He was so knowledgeable and took the time to listen to what was important to us. He was always available to talk things through and help solve any issues. Nothing was ever too much trouble, and he continually went over and above - genuinely a really nice guy! Nicola was also amazing, so efficient and made what was a very difficult process as painless as possible. We are very grateful to both of them for all of their help!



10A Clarence Street
Staines Upon Thames
Middlesex
TW18 4SP

t: 01784 779 100
e: staines@sjsmithestateagents.co.uk
www.sjsmithestateagents.co.uk

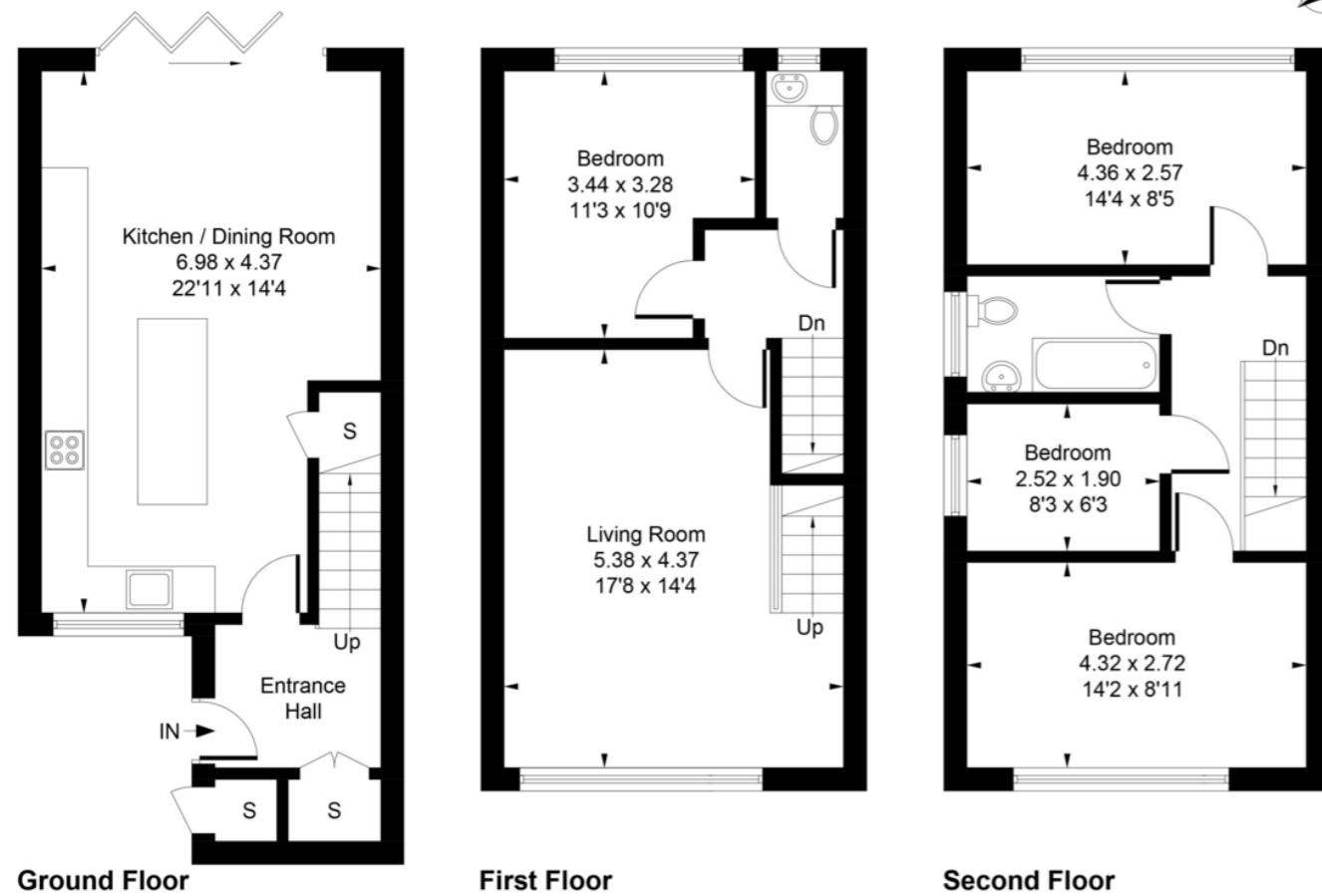


1 Dolphin Court, Bremer Road, Staines-upon-Thames, TW18 4HX
£500,000 - Freehold

A well-appointed four-bedroom terraced family home, conveniently situated in a desirable private close and within close proximity of Staines Mainline Railway Station and the many amenities of Staines shopping centre. Occupying approximately 117 sq/m of internal living space, this spacious property briefly comprises of entrance hallway, four good sized bedroom, first floor cloakroom/WC, large first floor reception room, family bathroom to the second floor, spacious fitted kitchen/dining room, and off-road parking. This impressive freehold property further boasts gas/central heating, double glazing, and a secluded private rear garden. Sole Agent.

- **FOUR-BEDROOM TERRACED HOUSE**
- **SPACIOUS FIRST FLOOR RECEPTION ROOM**
- **MODERN FITTED KITCHEN**
- **FIRST FLOOR CLOAKROOM WC**
- **OFF-ROAD PARKING**
- **SECLUDED PRIVATE REAR GARDEN**
- **DESIRABLE PRIVATE CLOSE LOCATION**
- **GAS/CENTRAL HEATING**
- **DOUBLE GLAZING**
- **CLOSE PROXIMITY TO STAINES HIGH STREET**

Approximate Gross Internal Area = 117.11 sq m / 1261 sq ft



Whilst every attempt has been made to ensure the accuracy of the floor plan contained here, measurements of doors, windows, rooms and any other items are approximate and no responsibility is taken for any error, omission, or mis-statement. This plan is for illustrative purposes only and should be used as such by any prospective purchase.



Council Tax

Spelthorne Borough Council, Tax Band D being £2,304.58 for 2024/25
 Council tax bands can be reassessed by local authorities at any point, the council tax band is only taken at point of listing and should not be relied on as current banding

Lease and service charge information, all to be confirmed via solicitors;

Tenure: Freehold
 Service Charge:
 Ground rent:

Agent note Under Consumer Protection Regulations we have endeavoured to make these details as reliable and as accurate as possible. The accuracy is not guaranteed and does not form part of any contract as the details are prepared as a general guide. We have not carried out a detailed survey or tested any appliances, specific fittings, or services (gas/electric). Room sizes should not be relied upon for carpets or furnishing nor should internal photos as these are intended as a guide only and may have changed since. It should not be assumed that any furniture/fittings are included. Lease, ground rent, maintenance or any other charges have been provided by the vendor and their accuracy cannot be guaranteed. We always advise a buyer should obtain verification on points via a solicitor.