

Why use S J Smith Estate Agents? Here's some of our reviews to tell you why!

Hours: 8am–7pm Monday to Friday, 8am-5pm Saturday and 10am-2pm Sunday.
Phone: Ashford 01784 243 333 – Staines 01784 779 100
Email: ashford@sjsmithestateagents.co.uk - staines@sjsmithestateagents.co.uk



Sajid Abbasi

I have used SJSmith Estate agents for last 7 years, both as buyer and landlord. They always come across as professional, courteous, and understanding to customer's needs. I continue to use their services and have no complaints.



Abigail P

Our overall experience with s j smith has been great. Everyone we have dealt with has been brilliant and can't thank you enough especially Nicola who has kept us updated and constantly chased the chain for us after a difficult chain and original one falling through. Thank you!!



Robert Boyce

Great service from Amir and the team! We tried to sell through an online agent with no success.... We signed up with SJSmith and then 3 days later we had an offer! Highly recommend!



Lincoln Williamson

My partner and I recently bought our first home from S J Smith and from start to finish they were excellent. From arranging a viewing, to keeping us updated throughout the whole process and being able to answer all our questions and queries in a very timely manner. There was a number of difficulties with the sale, however Nicola went above and beyond in helping these difficulties get resolved, keep us in the loop, offer support and guidance and ensure that the sale happened as quick as possible. If not for Nicola, I honestly don't think the sale would have gone ahead! Thank-you Nicola and thank you S J Smith!



Katie Jameson

Great service, kept up to date throughout the whole process as the first time selling a home.



Louise Cambray

We bought and sold through SJ Smith and can't recommend them enough. Everyone at the office is great but we knew we were in safe hands with Louis from the off. He was so knowledgeable and took the time to listen to what was important to us. He was always available to talk things through and help solve any issues. Nothing was ever too much trouble, and he continually went over and above - genuinely a really nice guy! Nicola was also amazing, so efficient and made what was a very difficult process as painless as possible. We are very grateful to both of them for all of their help!



10A Clarence Street
Staines Upon Thames
Middlesex
TW18 4SP

t: 01784 779 100
e: staines@sjsmithestateagents.co.uk
www.sjsmithestateagents.co.uk

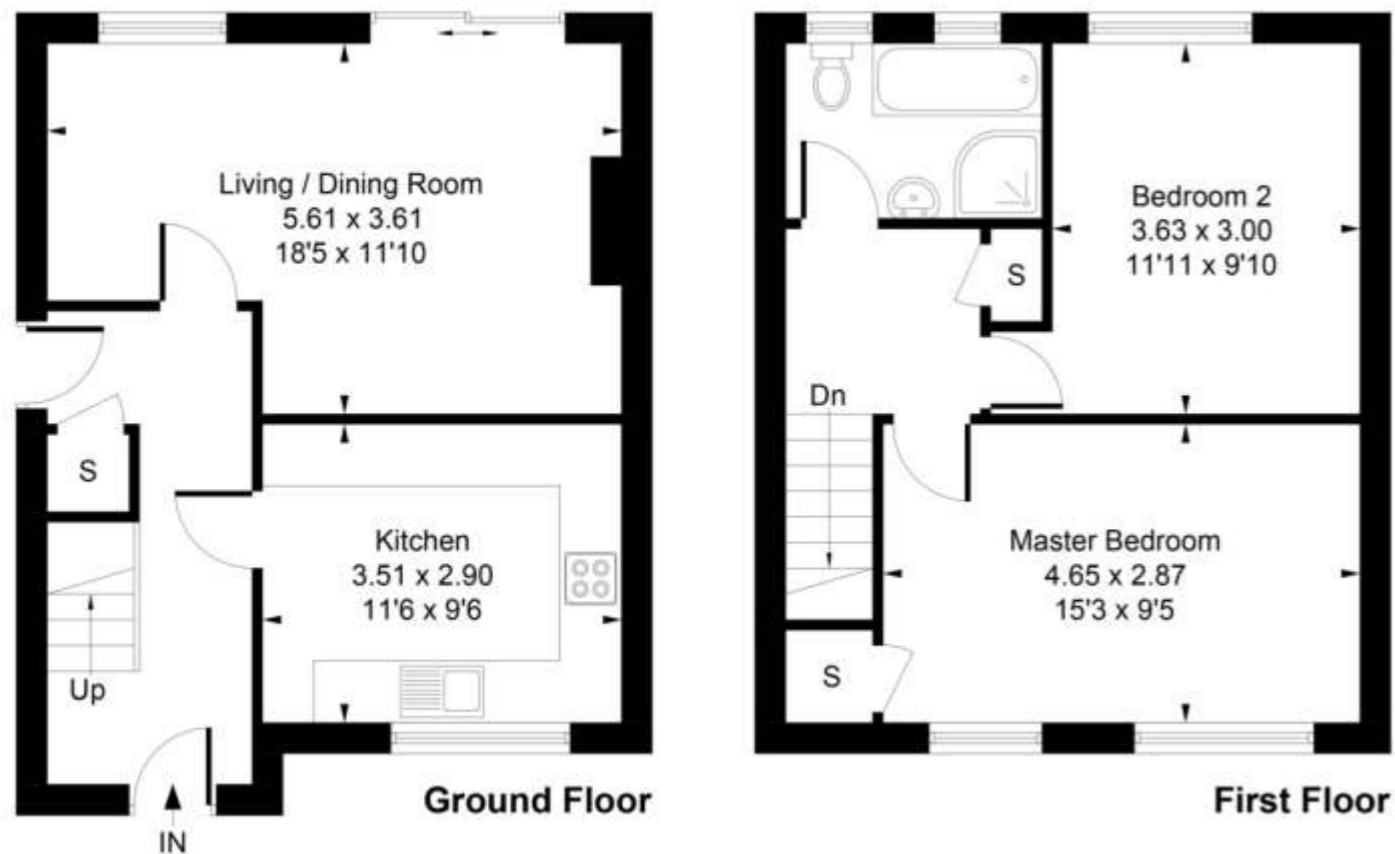


123 Elizabeth Avenue, Staines-upon-Thames, Surrey TW18 1JN
£425,000 - Freehold

A stunning two double bedroom mid-terrace family home, having undergone refurbishment by the current owners, making this very impressive throughout and offering potential to extend (STPP). Located on the Staines/Laleham and within walking distance to local shops and the popular Matthew Arnold School. The ground floor accommodation comprises of a spacious and bright entrance hall with storage and side access, a large modern kitchen with ample worktops, base and eye level units as well as ample space for white goods. Furthermore, there is a bright and airy living room with ample space for dining area, boasting patio doors out onto the rear garden and wood style flooring that runs throughout. To the first floor there are two spacious double bedrooms and a modern fully tiled four-piece bathroom with separate corner shower and stunning freestanding bath. Externally to the rear of the property there is a beautiful, landscaped rear garden measuring approx. 75ft in length, with patio area, ideal for outside entertaining. To the front there is off street parking and further area of lawn that could be turned into more parking (STPP), access to the rear of the property through gate which also gives access back into the hallway. This property really needs to be seen to appreciate what is on offer, call S J Smith now as the sole selling agent to arrange a viewing.

- TERRACED FAMILY HOME
- EXCELLENT CONDITION THROUGHOUT
- SPACIOUS MODERN KITCHEN
- BRIGHT AND AIRY LIVING/DINING AREA
- TWO DOUBLE BEDROOMS
- STUNNING FOUR PIECE BATHROOM SUITE
- LARGE PRIVATE GARDEN
- POTENTIAL TO EXTEND (STPP)
- WALKING DISTANCE TO SHOPS AND SCHOOLS
- EPC RATING TBC

Approximate Gross Internal Area
73.8 sq m / 795 sq ft



Whilst every attempt has been made to ensure the accuracy of the floor plan contained here, measurements of doors, windows, rooms and any other items are approximate and no responsibility is taken for any error, omission, or mis-statement. This plan is for illustrative purposes only and should be used as such by any prospective purchase.



Council Tax

Spelthorne Borough Council, Tax Band C being £2,048.52 for 2024/25

Council tax bands can be reassessed by local authorities at any point, the council tax band is only taken at point of listing and should not be relied on as current banding

Agent note Under Consumer Protection Regulations we have endeavoured to make these details as reliable and as accurate as possible. The accuracy is not guaranteed and does not form part of any contract as the details are prepared as a general guide. We have not carried out a detailed survey or tested any appliances, specific fittings, or services (gas/electric). Room sizes should not be relied upon for carpets or furnishing nor should internal photos as these are intended as a guide only and may have changed since. It should not be assumed that any furniture/fittings are included. Lease, ground rent, maintenance or any other charges have been provided by the vendor and their accuracy cannot be guaranteed. We always advise a buyer should obtain verification on points via a solicitor.