



2 Floors



4 Bedrooms



1 En suite

## HILLCOTT FOUR BEDROOM HOME

A four bedroom detached home with spacious lounge and fantastic open plan kitchen / dining and family area featuring a bay window and French doors leading to the rear garden.

Upstairs, there are four bedrooms with the master bedroom benefitting from fitted wardrobes and en suite facilities.

# HILLCOTT FOUR BEDROOM HOME

## ✦ DIMENSIONS

### First Floor:

#### Bedroom 1

2.82m x 3.28m  
9'3" x 10'9"

#### En Suite

#### Bedroom 2

3.16m x 3.18m  
10'4" x 10'5"

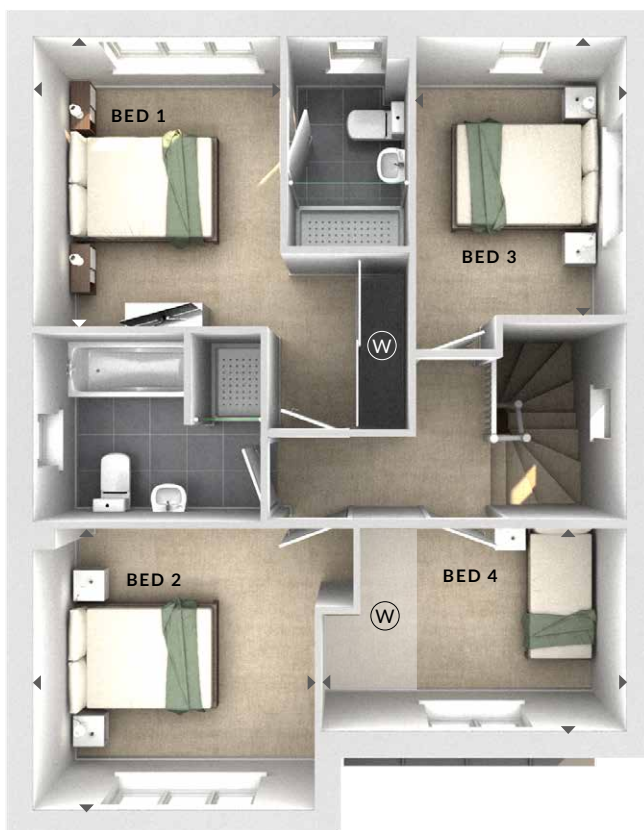
#### Bedroom 3

2.37m x 3.15m  
7'9" x 10'4"

#### Bedroom 4

3.48m x 2.28m  
11'5" x 7'6"

#### Bathroom



First Floor

### Ground Floor:

#### Lounge

3.76m x 4.77m  
12'4" x 15'8"

#### Kitchen / Dining

6.71m x 3.85m  
22'0" x 12'8"

#### (W) Wardrobes

\*Wardrobes to bed 4 indicated in selected plots only. Please speak to Sales Advisor for details.

#### (U) Utility Cupboard

#### (C) Cloaks

#### ◀▶ Measurement Points

#### △ External Access



Ground Floor