
TO LET

- ✔ 300 residential apartments
- ✔ High specification office space covering 37,476 sq ft
- ✔ A 4/5 star hotel
- ✔ Ground floor retail space
- ✔ 8 bar and restaurant units
- ✔ Health and Fitness/D2 leisure place
- ✔ A proposed 355 space multi story car park

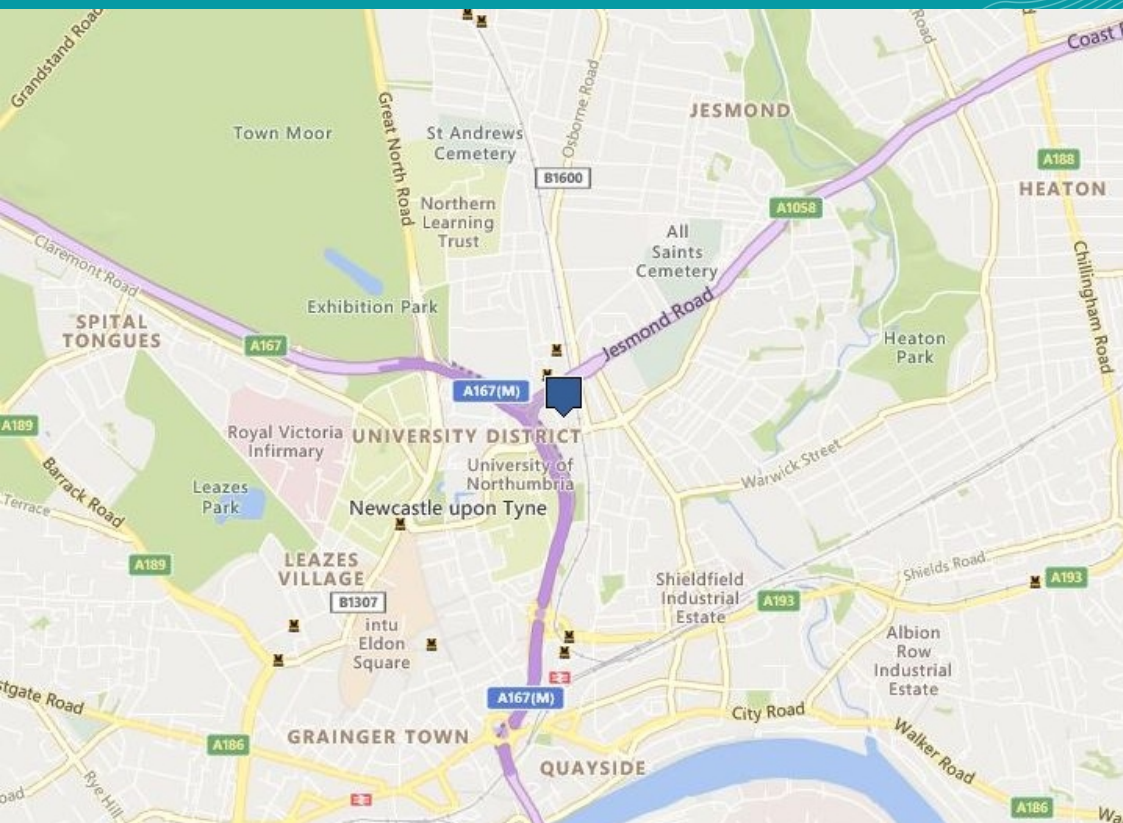


Jesmond Three Sixty, Newcastle Upon Tyne NE2 1DB

Bars, Restaurant and Gym Premises

4,176 - 20,321 Sq Ft
(388 - 1,888 Sq M)

Jesmond Three Sixty, Newcastle Upon Tyne NE2 1DB



DESCRIPTION

Jesmond Three Sixty is undergoing a comprehensive redevelopment, conversion and refurbishment to provide a significant mixed use scheme.

The first phase of the scheme is now complete and comprises 80 luxury apartments including three ground floor units totalling 10,203 sq ft. The units can be utilised for a variety of uses including A1, A3 or A4. There is also a basement suitable for a gym of 11,600 sq ft in the block opposite. The total scheme comprises:-

ACCOMMODATION

Net Internal Areas	sq ft	sq m
Unit 1	LET	
Unit 2	4,176	388
Unit 3	4,542	422
Gym (Basement)	11,603	1,078
Total	20,321	1,888

EPC

An EPC rating will be calculated upon completion of the development.

LOCATION

Jesmond Three Sixty is a high profile new development adjacent to Jesmond Metro Station. The scheme is on Jesmond Road (A1058) which leads directly to the A167(M) central motorway.

TERMS

Retail Units: £20.00 per sq ft / Gym Unit: £10.00 per sq ft

RENT

Retail units: £20.00 per sq ft / Gym: £10.00 per sq ft

BUSINESS RATES

The premises will need to be assessed following initial occupation.

VAT

All prices, premiums and rents, etc are quoted exclusive of VAT at the prevailing rate.

lsh.co.uk

© Lambert Smith Hampton. Details of Lambert Smith Hampton (LSH) can be viewed on our website www.lsh.co.uk. This document is for general informative purposes only. The information in it is believed to be correct, but no express or implied representation or warranty is made by LSH as to its accuracy or completeness, and the opinions in it constitute our judgement as of this date but are subject to change. Reliance should not be placed upon the information, forecasts and opinions for any purpose, and no responsibility or liability, whether in negligence or otherwise, is accepted by LSH or by any of its directors, officers, employees, agents or representatives for any loss arising from any use of this document or its contents or otherwise arising in connection with this document. All rights reserved. No part of this document may be transmitted or reproduced in any material form by any means, electronic, recording, mechanical, photocopying or otherwise, or stored in any information storage or retrieval system of any nature, without the prior written permission of the copyright holder, except in accordance with the provisions of the Copyright Designs and Patents Act 1988. Warning: the doing of an unauthorised act in relation to a copyright work may result in both a civil claim for damages and criminal prosecution. 02-Nov-2021

VIEWING & FURTHER INFORMATION

Viewing strictly by prior appointment:

**Lambert
Smith
Hampton**

Emily Wood
0191 338 8316
ewood@lsh.co.uk

Chris Pearson
0191 211 1555
chrisp@naylorsgavinblack.co.uk