



SILBURY
HOUSE

CENTRAL MILTON KEYNES · MK9 2AZ

silburyhousemk.co.uk

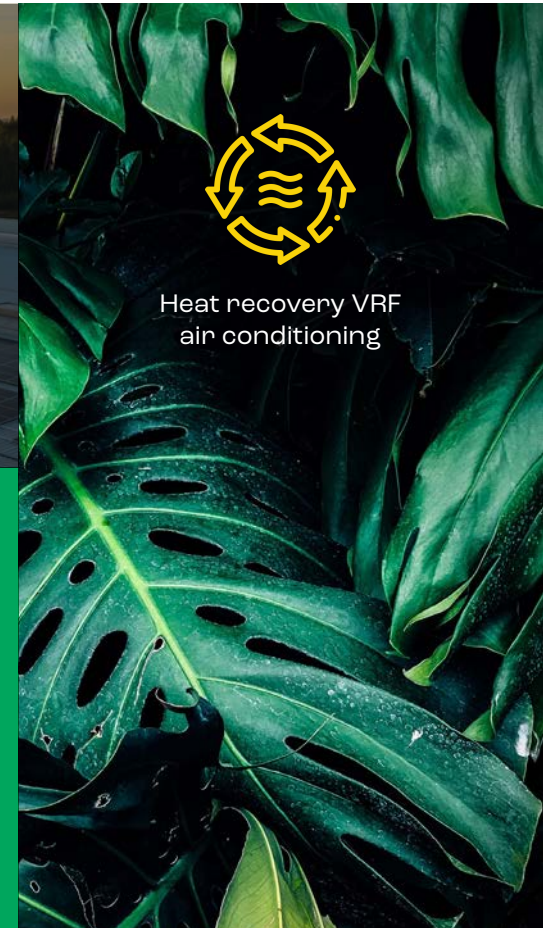
Sustainability Focused



Target EPC
A rating



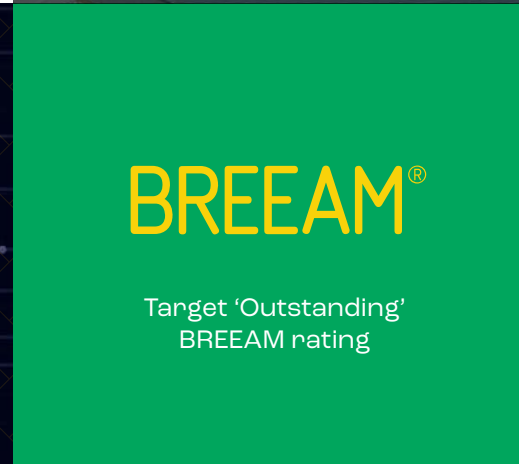
On-site PV solar
power generation



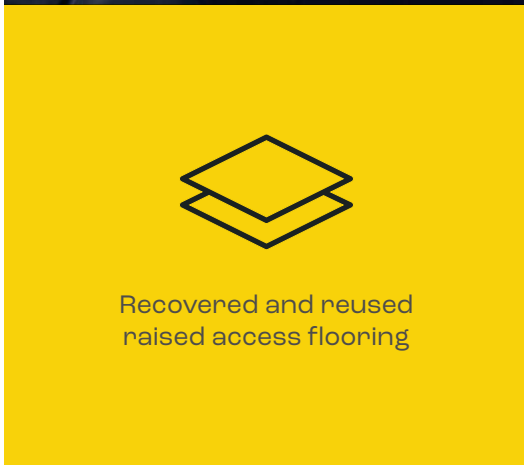
Heat recovery VRF
air conditioning



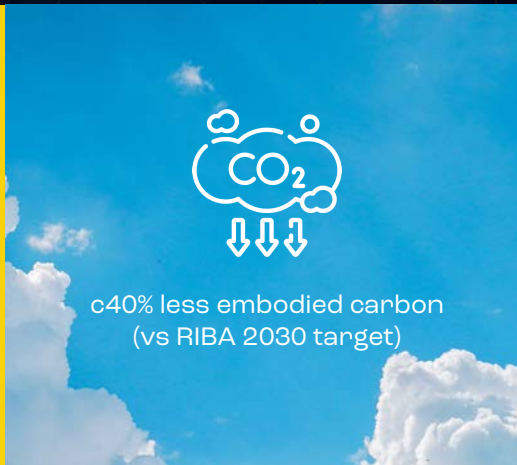
30% EV
charging provision



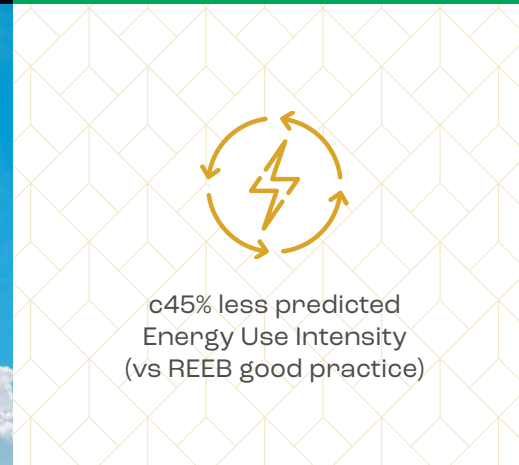
Target 'Outstanding'
BREEAM rating



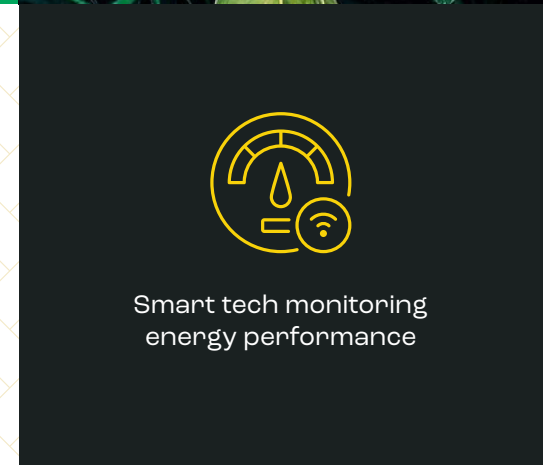
Recovered and reused
raised access flooring



c40% less embodied carbon
(vs RIBA 2030 target)



c45% less predicted
Energy Use Intensity
(vs REEB good practice)



Smart tech monitoring
energy performance



GNR8, Watford



In business to do business

The RO has a 30 year history of investing and developing in Milton Keynes. The location has held a longstanding appeal for us, with easy access to London, Oxford and Cambridge.

The city is set to benefit from improved rail connections to Oxford and Cambridge and combined with its commitment to sustainability, the appeal is significantly enhanced.

We are excited to be bringing forward this scheme in Milton Keynes that prioritises sustainability in all aspects, from design to operation.

As a business with a 90-year history, we have seen many evolutions in the economic landscape, and we believe that we are in the midst of the biggest one yet. This has resulted in a radical adjustment not only in our approach to development but also our activity at a wider Group level. At all times we are striving to remain conscious of environmental and social issues to create value for all stakeholders.

We are proud to be leading the way in providing Milton Keynes' most sustainable office building in a city that shares our commitment to making the necessary changes to preserve our planet's future.



One Dorset Street, Southampton



CONNECT WITH US

The most sustainable office in Milton Keynes



The future of work is employee wellbeing

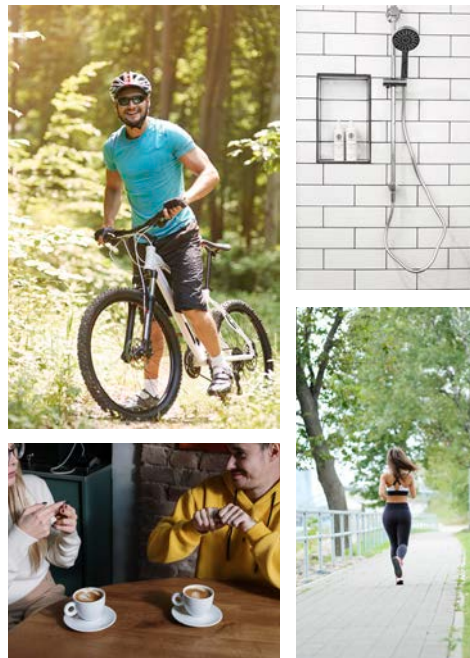
In the long term, workplace wellbeing can make or break a business. When employees feel overworked, tired or undervalued, they become disengaged and deliver poor quality work.

On the other hand, employees who feel happy, healthy and supported perform at their best, are more motivated and provide better results.

What is ?

Fitwel is a high impact building certification designed to support healthier workplace environments and improve occupant health and productivity.

SILBURY HOUSE
FITWEL CERTIFICATION



Fitwel 3 stars



RESET air quality



Secure cycle storage



Unisex showers on all floors



New business lounge and communal break out area



Attention to detail



New Grade A specification



New reconfigured reception and entrance



New city garden courtyard



New VRF air conditioning



New metal suspended ceilings & energy efficient LED lighting



New Electrak under floor power distribution



Fully DDA compliant



Cat A+ fitted suites on the ground floor



New WCs



Secure car parking with EV charging points



New lift



Sustainably sourced and responsibly made furniture



Smart technology for improved operating efficiency



Secure cycle storage



Showers

A new arrival experience

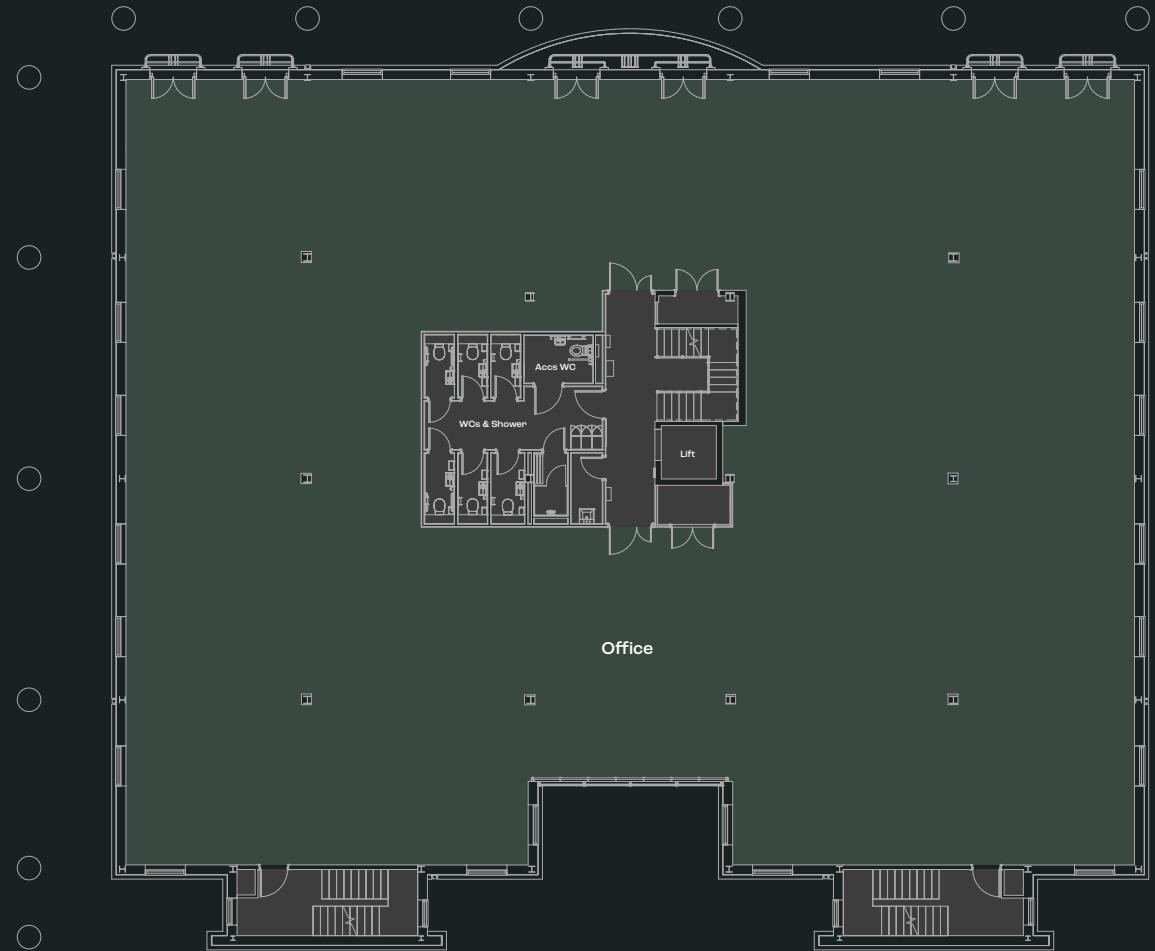


Reception CGI

Regular floorplates to maximise occupational efficiency

The first and second floors provide bright and efficient floor plates which are easily divisible, accommodating requirements from 4,270 to 17,502 sq ft.

Floor	Use	Sq ft	Sq m
Second	Office	8,751	813
First	Office	8,751	813



KEY

- Office
- Core

Typical upper floor plan



Open floor plates on the first and second floors

Second floor offices CGI

Communal business lounge



Business lounge CGI

Fully furnished & fitted

Silbury House will offer four Cat A+ fitted and furnished office suites to an exceptional standard situated on the ground floor.

- ❖ Furnished and cabled workstations
- ❖ Fully fitted kitchen & break out space
- ❖ Fitted meeting rooms
- ❖ Informal meeting pods
- ❖ Connected fibre up to 1GB bandwidth

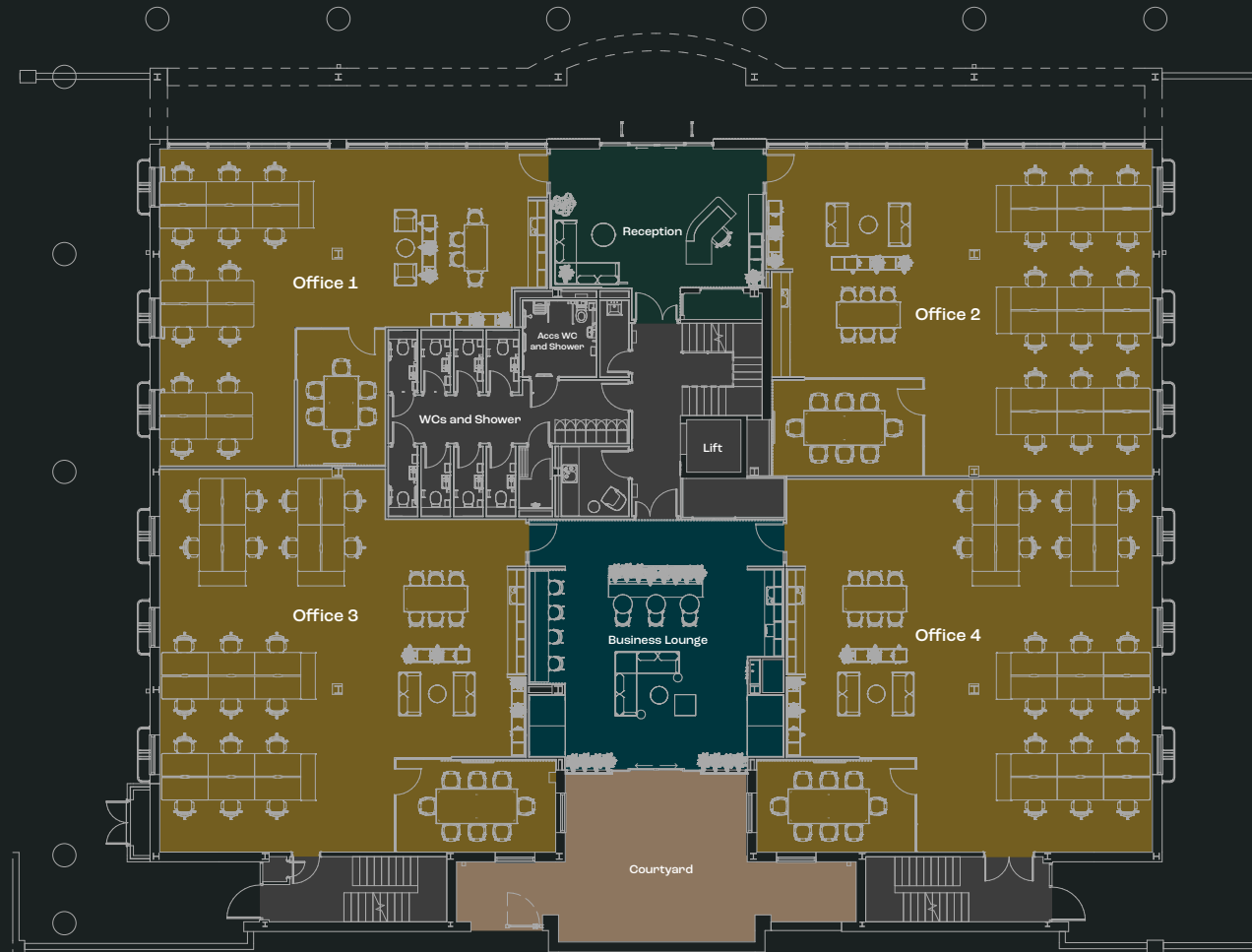


Ground floor suites CGI

Ground floor Cat A+ office suites

The ground floor suites will offer four exclusive office suites for occupiers seeking a high quality collaborative space from 14 to 20 workstations.

Floor	Use	Sq ft	Sq m
Ground	Office 1 – 14 workstations	1,101	102.3
	Office 2 – 18 workstations	1,405	130.5
	Office 3 – 20 workstations	1,537	142.8
	Office 4 – 20 workstations	1,582	147.0



KEY

- Reception
- Core
- Business Lounge
- Courtyard
- Cat A+ Offices

Ground floor plan

City garden courtyard space



Courtyard CGI

Better connected

ADDRESS: Silbury House, 300 Silbury Blvd,
Milton Keynes MK9 2AZ

GOOGLE MAPS: [CLICK HERE](#)

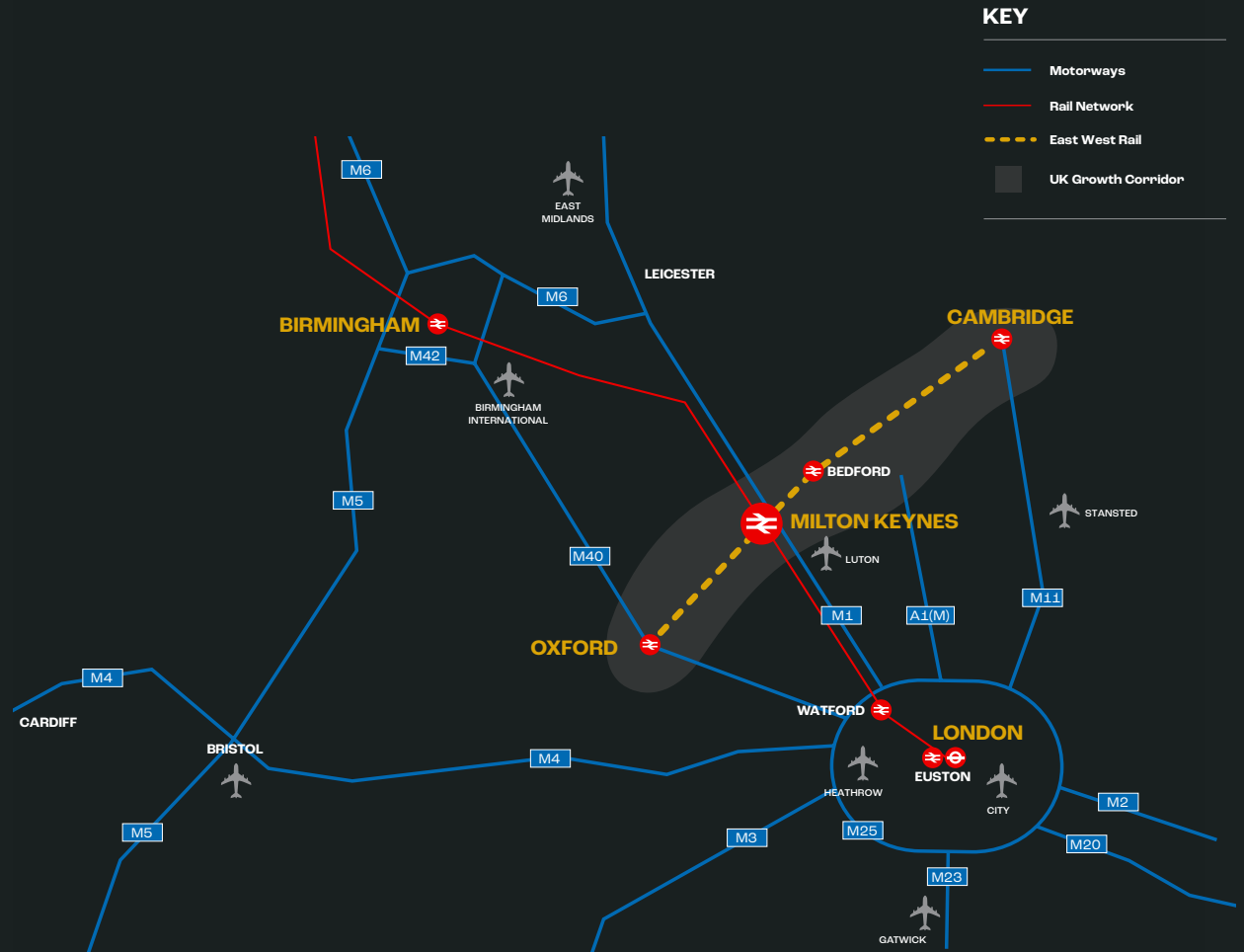
WHAT3WORDS: [///almost.delighted.inflit](#)

Situated at the heart of the growth corridor, Milton Keynes is poised for further growth and will benefit significantly from major infrastructure improvements between Oxford and Cambridge.



The new fast rail link will directly connect the cities of Cambridge, Milton Keynes and Oxford, cutting current journey times in half.

Phase One from Oxford to Milton Keynes is due to be operational in 2025 and the entire line operational by 2030.



KEY

- Motorways
- Rail Network
- - - East West Rail
- UK Growth Corridor

RAIL

London Euston	34 mins
Birmingham New Street	53 mins
Manchester Piccadilly	98 mins

Source: National Rail Enquiries

ROAD

M1 Junction 14	5 mins
M25 Junction 21	35 mins
Central London	50 mins
Oxford	60 mins
Cambridge	60 mins
Central Birmingham	70 mins

Source: Google Maps

AIRPORTS

London Luton	36 mins
Birmingham International	70 mins
London Stansted	75 mins
London Heathrow	90 mins
London Gatwick	120 mins

Source: Google Maps

Destination of choice

Local occupiers:



Mercedes-Benz

SHOOSMITHS



Green Energy

The Central Business District is supplied with low carbon district heating and electricity by a Heat and Power (CHP) energy station.



Super connected

Britain's fastest fibre optic network offering up to 1,000 Mbps. Full fibre connections are a policy requirement for all new developments.



UK top five

Recognised as the national hotspot for entrepreneurial activity and ranks in the UK's top five for concentration of high tech and digital SMEs.



Population

MK's population is projected to exceed 300,000 by 2027, with the demographic weighted towards the young and working age brackets.



Growth

One of the UK's fastest growing economies with a GVA of £14bn.



Innovation

MK is ranked 3rd of cities in the UK with the highest number of new economy firms.

The centre of attention

RESTAURANTS & BARS

- | | |
|-------------------|--------------------------|
| 1 THAI MODERN | 11 WETHERSPOONS |
| 2 OLIVE TREE | 12 SLUG & LETTUCE |
| 3 BAR & BLOCK | 13 BLOSSOM ROOM |
| 4 BRASSERIE BLANC | 14 BREWDOG |
| 5 DEROKA | 15 ALL BAR ONE |
| 6 ZIZZI | 16 BE AT ONE |
| 7 LAS IGUANAS | 17 HARRODS CHAMPAGNE BAR |
| 8 BROWNS | 18 MIDSUMMER TAP |
| 9 AKASAKA | 19 REVOLUCIÓN DE CUBA |
| 10 WAGAMAMA | 20 REVOLUTION |

GYMS & WELLNESS

- | | |
|-----------------|-------------------------------|
| 1 THE GYM GROUP | 3 BANNATYNE HEALTH CLUB & SPA |
| 2 BODY STREET | 4 F45 TRAINING |

COFFEE

- | | |
|---------------------|----------------------|
| 1 OUT OF OFFICE | 8 CARLO'S COFFEE BAR |
| 2 BOGOTA COFFEE CO. | 9 CORNERSTONE CAFE |
| 3 COSTA | 10 CAFFÈ NERO |
| 4 STARBUCKS | 11 ORI CAFFÈ |
| 5 UPPER REGENCY | 12 CAFE W |
| 6 CALABRIA COFFEE | 13 LAVAZZA COFFEE |
| 7 BV COFFEEHOUSE | 14 XPRESSONET |



SILBURY
HOUSE

OWNER / DEVELOPER



In business to do business

MEMBER ASSOCIATIONS



JOINT AGENTS

**Lambert
Smith
Hampton**

TOM HARKER

07702 884 405

tharker@lsh.co.uk

TOM PUGH

07938 737 487

tpugh@lsh.co.uk

**bray
fox
smith**

IAN LEATHER

07860 612 242

ianleather@brayfoxsmith.com

JOSS BURROWS

07342 341 727

jossburrows@brayfoxsmith.com