

THE CLOVE BUILDING

Third Floor, 4 Maguire Street,
London, SE1 2NQ

Expert-led workspace designed for your team, with self-contained meeting areas and amenities, which is ready for business as usual from move-in day plus on-going support from your workspace experience coordinator.



73 desks
For teams up to 105 people



Showers



Bike Racks



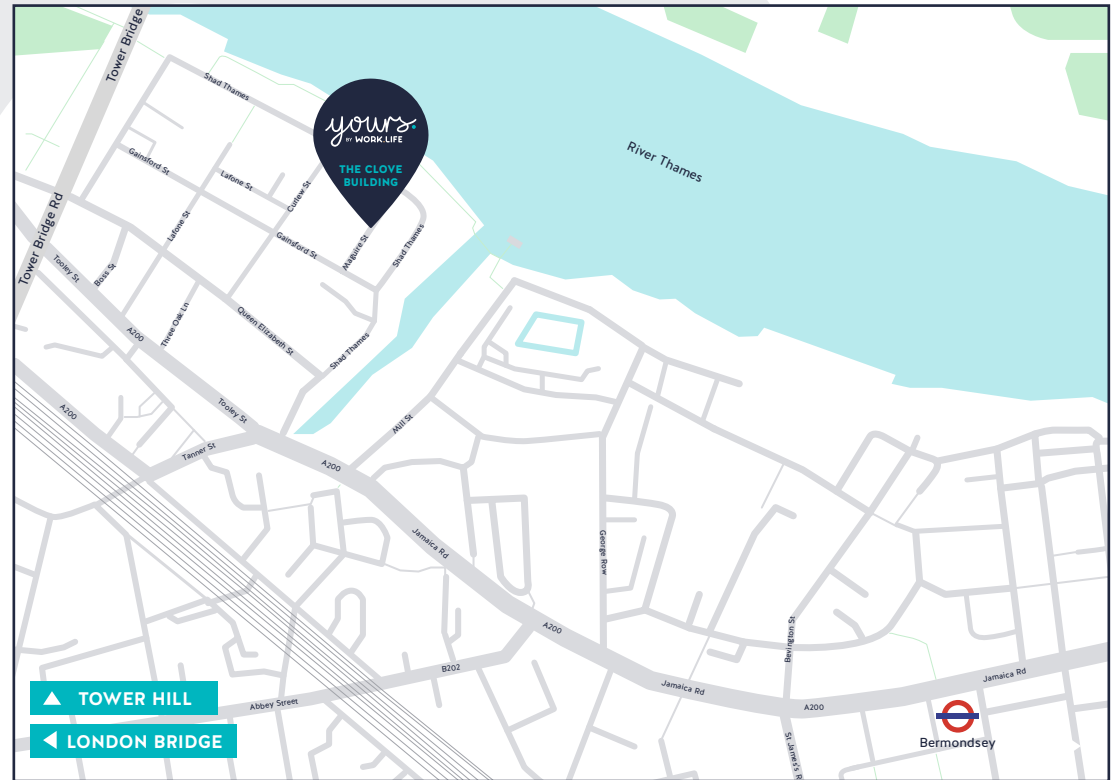
Parking

yours.
BY WORK LIFE

THE CLOVE BUILDING




Located conveniently close to the City and Central London.

The Clove Building has riverside tranquility and a bustling villagey feel boasting plenty of lovely independent shops, art galleries, bars and restaurants.



TRAVEL TIME

.....

-  **13 mins**
Bermondsey Station
-  **15 mins**
London Bridge Station
-  **15 mins**
Tower Hill Station

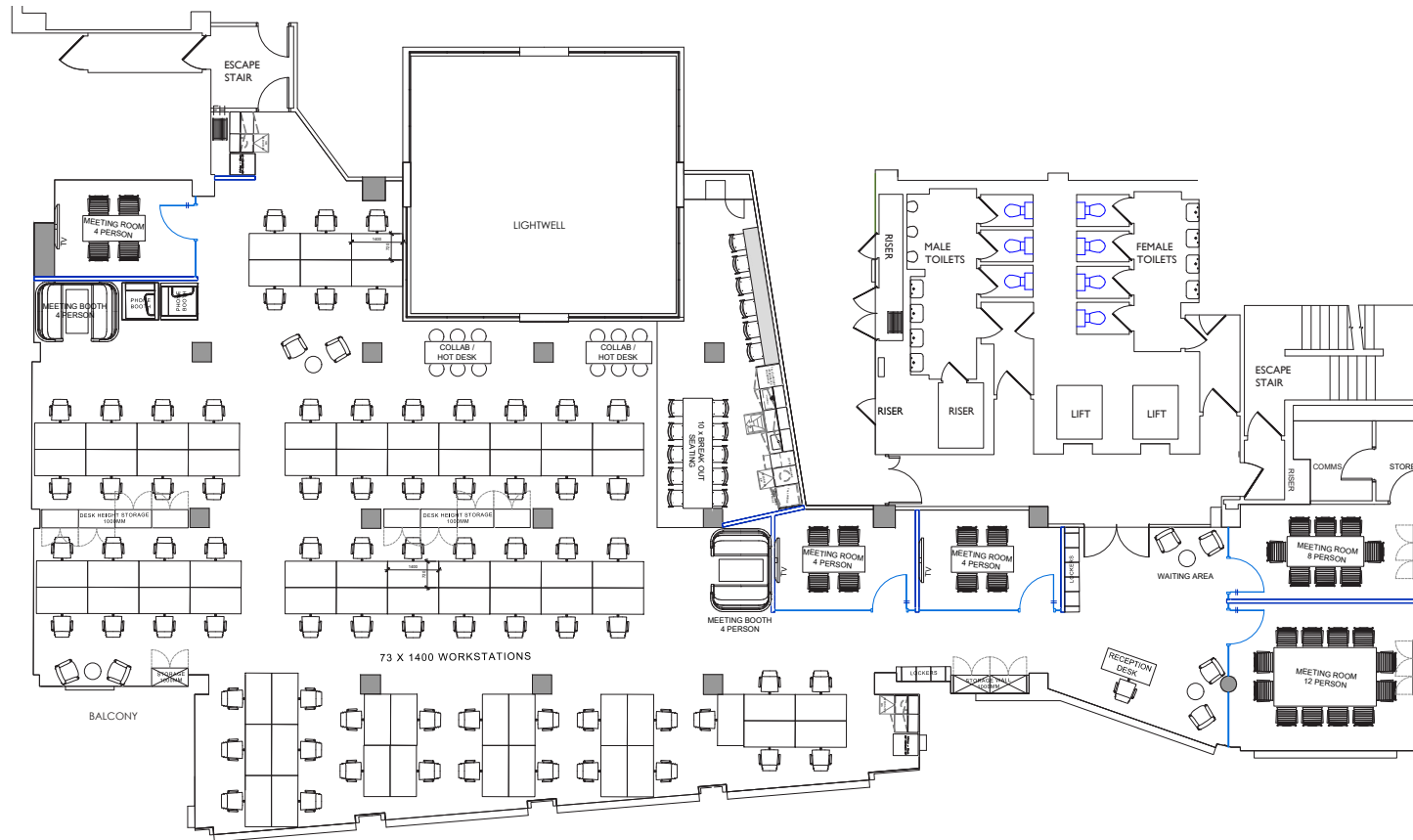
| Maltby Street Market - 8 mins walk



You and your team will never be short of something to do with The Scoop, Maltby Street Market and numerous bars, cafés and some of London's most fashionable restaurants nearby.

yours.
BY WORK LIFE

THE CLOVE BUILDING



Meeting rooms

- 1 x 12 person
- 1 x 8 person
- 3 x 4 person

2 x phone booths

Fully fitted kitchen

Breakout areas

Reception

Showers

Bike rack

Lifts

Parking

Pricing

4599 sq ft

73 desks | For teams up to 105*

3 year: £53,000 + VAT p/m

2 year: £55,800 + VAT p/m

1 year: £58,840 + VAT p/m

*70% desk occupancy ratio

Prices may be subject to change.

Floor plan above is for illustrative purposes only.