



White City Place, W12

Broadcast Centre

Part Ground floor
7,225 sq ft (671 sq m)

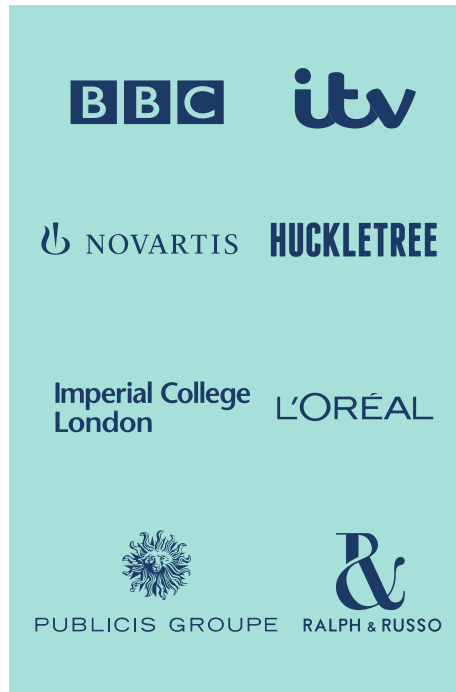


Broadcast Centre is positioned in the heart of the White City creative campus, hosting a diverse mix of businesses, life sciences, brands and cultural institutions.

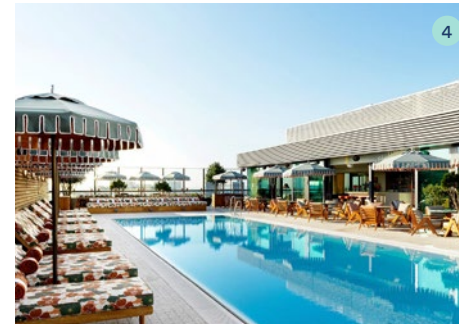
White City

An array of excellent leisure facilities, cafés, restaurants and bars on your doorstep.

Formally nicknamed BBC Media Village, the rich history of the area includes the 1908 Olympic Games held at the White City Stadium, the 1908 Franco-British Exhibition, and the long standing heritage of the BBC Broadcasting in both Broadcasting centre and Television Centre – a landmark of architectural significance.



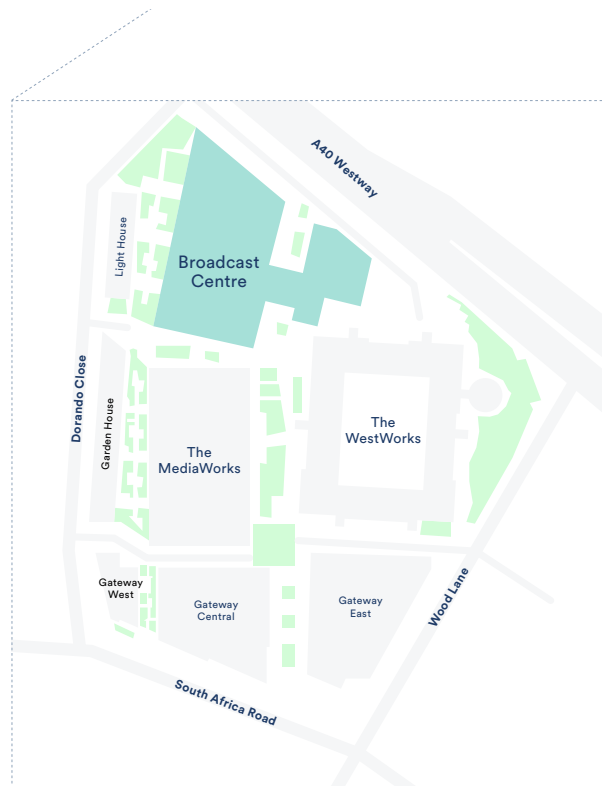
- 1 The Athenian
- 2 Potager
- 3 Starbucks
- 4 White City House
- 5 Public Realm
- 6 Waka



Connected

Excellent transport links with White City, Wood Lane and Shepherd's Bush stations within a short distance.

Westfield is nearby, offering a mix of premium and high street brands for those in need of a bit of retail therapy. Whilst, the sophisticated White City House members club, offers a welcome retreat from the working world – complete with cinema and rooftop pool.



- White City / Wood Lane
- Paddington
8 mins
- Bond Street
12 mins
- Clapham Junction
18 mins
- King's Cross St. Pancras
21 mins
- Farringdon
22 mins
- Liverpool Street
24 mins

Travel times from
White City / Wood Lane Tube Station

Highly Specified

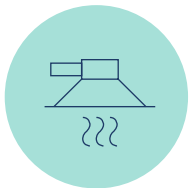
A stunning double height reception awaits you upon your arrival.

The part ground floor is accessed beyond the security gates in the impressive reception – with visitors being welcomed with a soft seating area and Simon Patterson’s art wall, based on First World War dazzle camouflage.

Summary Specification



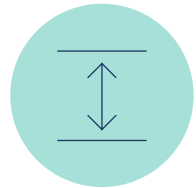
BREEAM Excellent & EPC Rating B



Air-conditioned chilled beam System



Double height reception



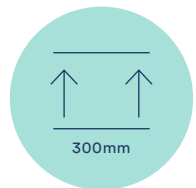
4.5m floor to ceiling height



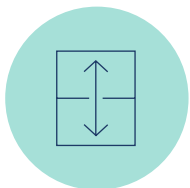
Direct access to communal courtyard



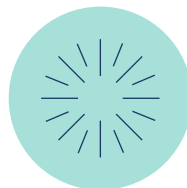
Secure bike racks and lockers



Raised floor



Floor to ceiling windows



Excellent natural light

Specification



Broadcast Centre

Page 5

Space to Create



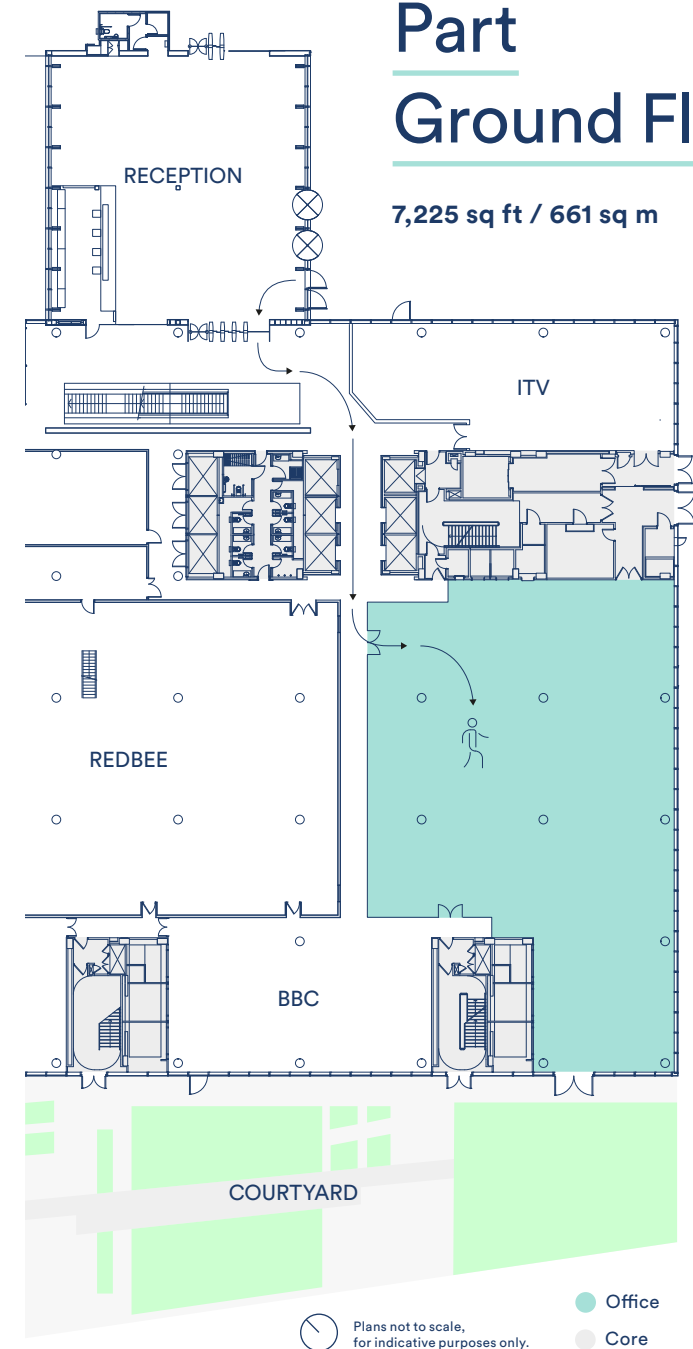
The Space

Clear bright open spaces with generous floor to ceiling heights.



Part Ground Floor

7,225 sq ft / 661 sq m



Get in Touch

Viewings

Strictly through sole letting agents

**Lambert
Smith
Hampton**

Lizzie Boswell
lboswell@lsh.co.uk
07731 528 980

Jay Moore
jamoore@lsh.co.uk
07840 020 072

Harry Gelder
hgelder@lsh.co.uk
07873 619 947

David Earle
dearle@lsh.co.uk
07850 056 626

© Lambert Smith Hampton. Details of Lambert Smith Hampton (LSH) can be viewed on our website www.lsh.co.uk. This document is for general informative purposes only. The information in it is believed to be correct, but no express or implied representation or warranty is made by LSH as to its accuracy or completeness, and the opinions in it constitute our judgement as of this date but are subject to change. Reliance should not be placed upon the information, forecasts and opinions for any the purpose, and no responsibility or liability, whether in negligence or otherwise, is accepted by LSH or by any of its directors, officers, employees, agents or representatives for any loss arising from any use of this document or its contents or otherwise arising in connection with this document. All rights reserved. No part of this document may be transmitted or reproduced in any material form by any means, electronic, recording, mechanical, photocopying or otherwise, or stored in any information storage or retrieval system of any nature, without the prior written permission of the copyright holder, except in accordance with the provisions of the Copyright Designs and Patents Act 1988. Warning: the doing of an unauthorised act in relation to a copyright work may result in both a civil claim for damages and criminal prosecution. March 2024.

