

matthew thomas

sales • management • lettings



19 Hopton Close, Ripley, DE5 3TQ

£295,000



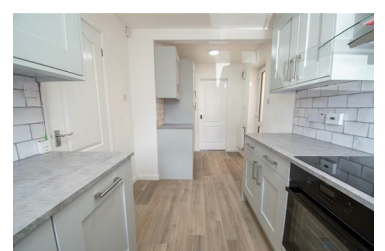
*** BEING SOLD CHAIN FREE *** is this newly refurbished FOUR BEDROOM detached house with driveway, garage and enclosed rear garden.

In brief, the property comprises to the ground floor of entrance hallway with guest WC, spacious lounge/diner with sliding doors to the garden and newly fitted modern kitchen with dishwasher, electric oven, four ring hob and extractor hood. The vendor has installed a new gas boiler and control programmer and central heating pump.

To the first floor is a newly fitted three piece family bathroom, four bedrooms with en-suite shower room and wardrobes to the master.

Externally to the front there is off street parking for two vehicles side by side and access to the single garage with up and over door. Gated side access

- Detached house
- En suite to master
- Low maintenance garden
- Four bedrooms
- Guest WC
- NO ONWARD CHAIN



2 Grosvenor Road, Ripley, Derbyshire, DE5 3JF

Tel: 01773252725 Email: info@mtresi.co.uk <https://matthewthomasresidential.co.uk/>