

matthew thomas

sales • management • lettings



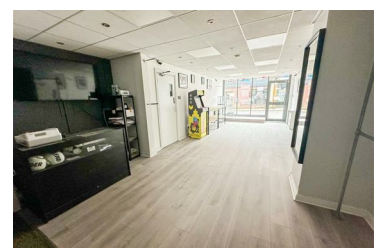
3 Grosvenor Road, Ripley, DE5 3JE

£8,200



Situated within Ripley town centre is this fantastic high street retail space with office/storage space, kitchen and w/c.

AVAILABLE FOR IMMEDIATE OCCUPATION.



2 Grosvenor Road, Ripley, Derbyshire, DE5 3JF

Tel: 01773252725 Email: info@mtresi.co.uk <https://matthewthomasresidential.co.uk/>