





Highland Road, Nazeing, Waltham Abbey, EN9 2PX

Westwood Leber are delighted to bring to the market this deceptively spacious and immaculately presented three-bedroom semi-detached family home located in a sought-after cul-de-sac in Nazeing.

This beautifully designed property has been significantly extended and upgraded by the current owners and offers a superb layout ideal for modern family living. The ground floor boasts a cozy separate living room, a versatile home office/playroom, a refitted shower room and a truly impressive open-plan kitchen/diner complete with a large central island, quartz worktops, high-gloss cabinetry, and skylights flooding the space with natural light.

Upstairs, there are three well-proportioned bedrooms, including a sizeable principal room with ample fitted storage, all served by a stylish family bathroom.

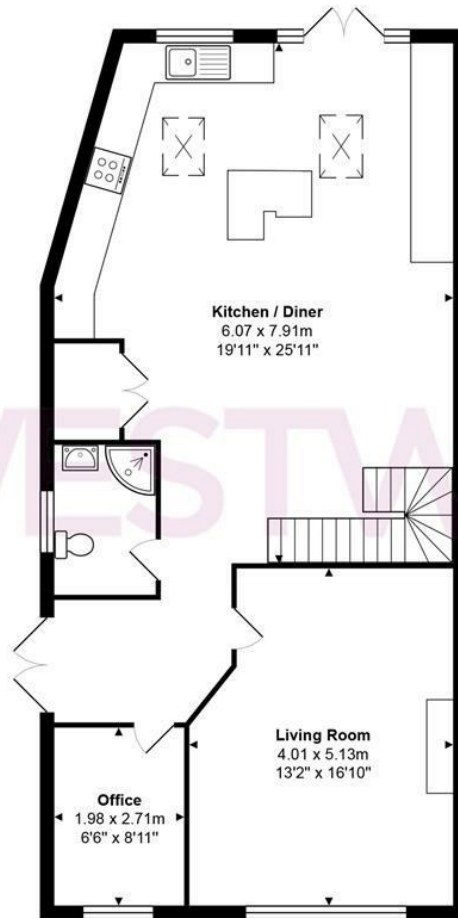
Externally, the property sits on an elevated plot with off-street parking, a private rear garden, and excellent scope for further enhancements (STPP).

Perfectly positioned within easy reach of local amenities, country walks, and highly regarded schooling, this home is ideal for growing families and commuters alike.

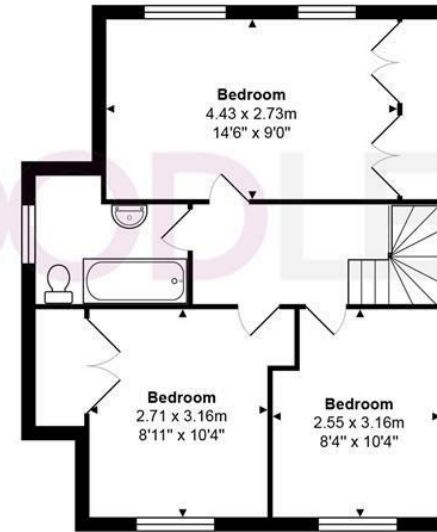
An internal viewing is highly recommended to appreciate the size and quality on offer.



WL WESTWOODLEBER



Ground Floor



First Floor

Total Area: approx. 120.6 m² ... 1298 ft²

THE FLOORPLAN IS FOR ILLUSTRATIVE PURPOSES ONLY AND IS NOT TO SCALE.
Measurements and features are approximate and may differ from the actual property. Verify all details independently; no liability is accepted for errors or omissions.

Property marketing provided by www.fotomarketing.co.uk











WESTWOODLEBER