





Cambridge Road, Sawbridgeworth, CM21 9BS

Westwood Leber are delighted to bring to the market this immaculately presented four-bedroom townhouse, located in the heart of Sawbridgeworth, is ideally situated near the train station and high street. The property features a modern kitchen, a lounge/dining room with bi-folding doors leading to the garden, and a ground floor cloakroom. Additionally, the ground floor boasts underfloor heating.

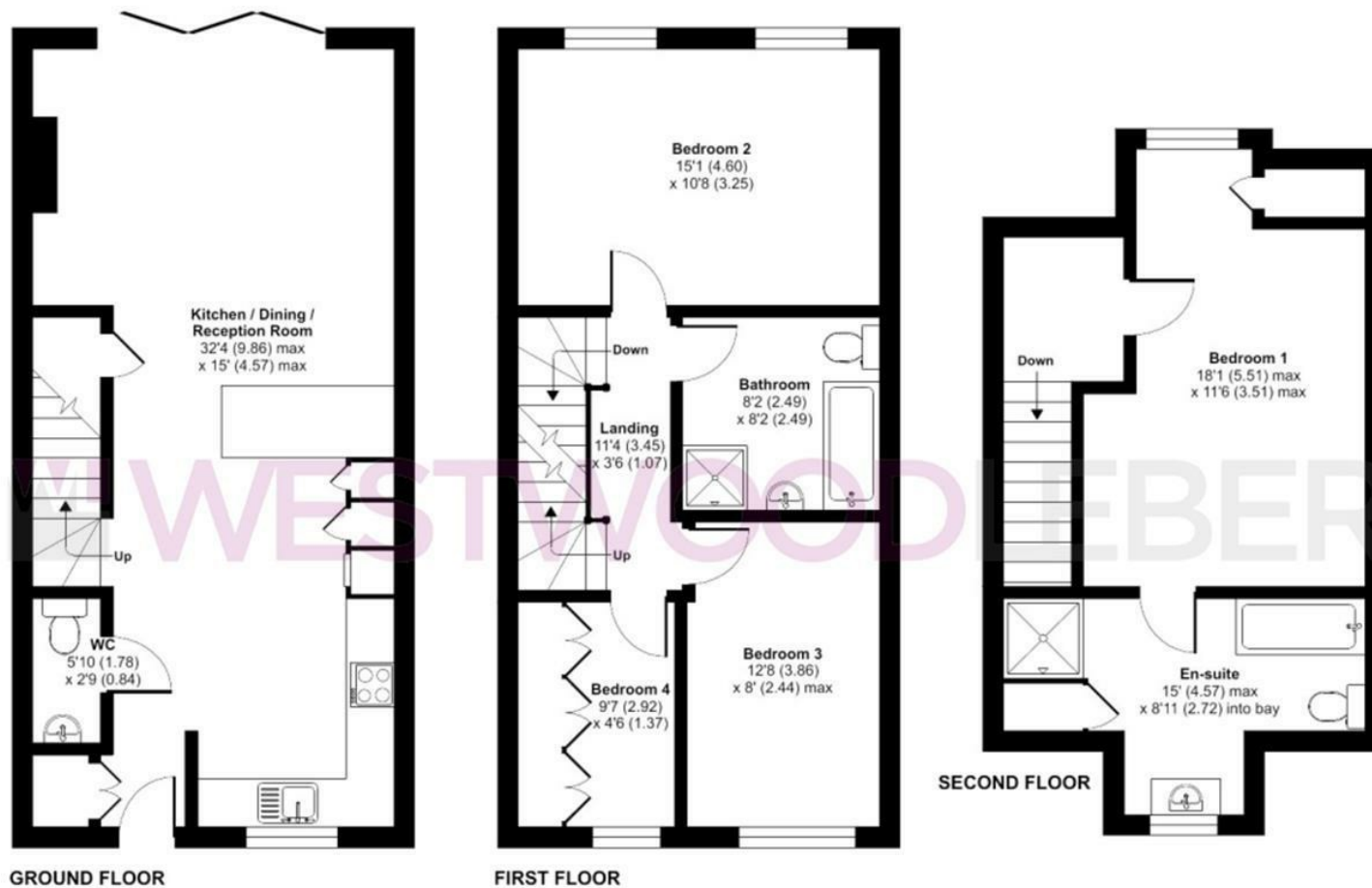
The first floor comprises two double bedrooms, a single bedroom, and a family bathroom. The second floor is home to a superb, modern principal bedroom with an ensuite bathroom.

Externally, the property offers a low-maintenance, secluded garden and two allocated parking spaces, adding to the overall appeal.



WESTWOODLEBER

WESTWOODLEBER
LET US GUIDE YOU HOME



Total area: approx. 123.2 sq. metres (1326.0 sq. feet)

THE FLOORPLAN IS FOR ILLUSTRATIVE PURPOSES ONLY AND IS NOT TO SCALE. Measurements and features are approximate and may differ from the actual property. Verify all details independently; no liability is accepted for errors or omissions.

[Property marketing provided by www.fotomarketing.co.uk](http://www.fotomarketing.co.uk)









WESTWOODLEBER



WESTWOODLEBER



WESTWOODLEBER



WESTWOODLEBER



WESTWOODLEBER