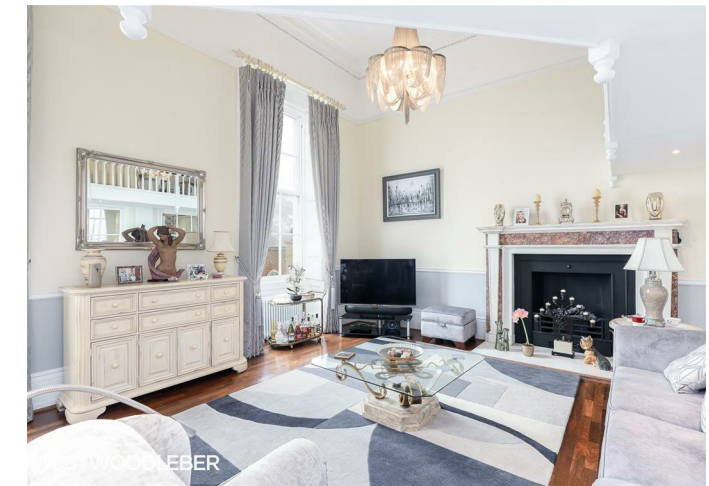




W WESTWOODLEBER

**W WESTWOODLEBER**  
LET US GUIDE YOU HOME

Wormleybury Manor, Broxbourne, EN10 7QE  
£599,995



## Wormleybury Manor, Broxbourne, EN10 7QE

Westwood Leber are delighted to bring to the market this truly stunning two double bedroom duplex apartment set over three floors with ample parking and a double garage. This beautiful home offers luxurious accommodation combining modern taste with a wealth of character features. Wormleybury Manor boasts communal grounds of approximately 56 acres and this stunning Grade I listed, 18th Century Manor, enjoys a unique setting surrounded by parkland with views of the lake, which residents enjoy fishing rights to, but remains conveniently located for access to London. Mylne provides the commuter with a peaceful country refuge within easy reach of London from a choice of rail stations (25 minutes from Broxbourne to Liverpool Street) and convenient for major road networks including the A10 and M25.



**W WESTWOODLEBER**

**W WESTWOODLEBER**  
LET US GUIDE YOU HOME

### Split Level Lower Ground Floor

Approx. 55.5 sq. metres (596.9 sq. feet)



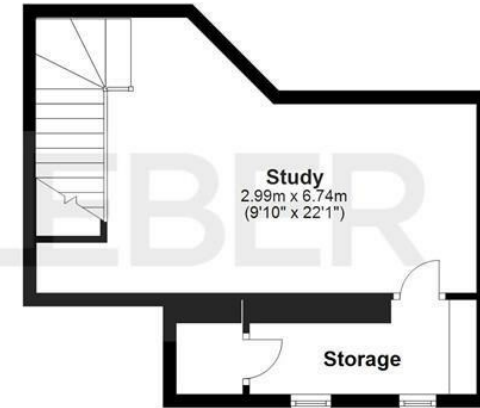
### Split Level Ground Floor

Approx. 57.1 sq. metres (615.1 sq. feet)



### Split Level First Floor

Approx. 30.5 sq. metres (328.3 sq. feet)



Total area: approx. 143.1 sq. metres (1540.4 sq. feet)

FOR ILLUSTRATIVE PURPOSES ONLY. NOT TO SCALE. Whilst every attempt had been made to ensure the accuracy of the floor plan shown, all measurements, positioning, fixtures, features, fittings and any other data shown are an approximate interpretation for illustrative purposes only and are not to scale. No responsibility is taken for any error, omission, miss-statement or use of data shown. Property marketing provided by Westwood Leber.  
Plan produced using PlanUp.







WESTWOODLEBER



WESTWOODLEBER



WESTWOODLEBER



WESTWOODLEBER







WESTWOODLEBER



WESTWOODLEBER



WESTWOODLEBER



WESTWOODLEBER



**W<sup>L</sup> WESTWOODLEBER**

**W<sup>L</sup> WESTWOODLEBER**  
LET US GUIDE YOU HOME