





Millers Lane, Stanstead Abbotts, Ware, SG12 8AF

Westwood Leber are delighted to bring to the market this well-presented one-bedroom apartment, ideally positioned within this popular development in the heart of Stanstead Abbotts. This charming property offers bright and well-arranged accommodation throughout, making it an ideal purchase for first-time buyers, investors, or those seeking a low-maintenance home in a highly convenient location.

The apartment features a spacious living room, providing an inviting space for both relaxation and dining, with a pleasant outlook and excellent natural light. From here, patio doors open directly onto the river, offering a peaceful and picturesque setting that enhances the overall appeal of the property. A separate fitted kitchen sits just off the living area, offering practical worktop space and storage. The property comprises a well-proportioned double bedroom along with a neatly presented bathroom. The layout is efficient and comfortable, perfectly suited to modern living.

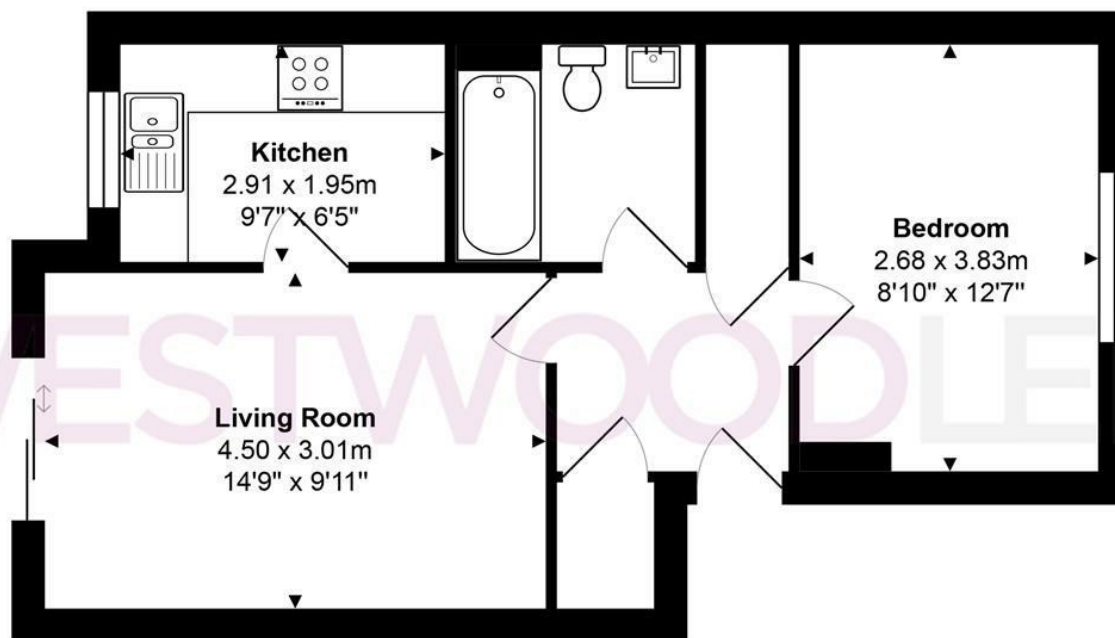
Externally, the apartment benefits from allocated parking, offering ease and convenience for residents. Millers Lane is superbly located within walking distance of St Margarets Station, providing direct links into London Liverpool Street, as well as the charming High Street of Stanstead Abbotts with its selection of cafés, restaurants, village shops and riverside walks. The surrounding area also offers beautiful countryside and excellent access to Ware, Hertford and major road networks.

An early viewing is highly recommended to appreciate the location and value this excellent apartment offers.



W^L WESTWOODLEBER

W^L WESTWOODLEBER
LET US GUIDE YOU HOME



Total Area: approx. 41.6 m² ... 447 ft²

THE FLOORPLAN IS FOR ILLUSTRATIVE PURPOSES ONLY AND IS NOT TO SCALE.
Measurements and features are approximate and may differ from the actual property. Verify all details independently; no liability is accepted for errors or omissions.

Property marketing provided by www.fotomarketing.co.uk





