

High Wych Road, Sawbridgeworth, CM21 0HH

****CHAIN-FREE*** We are delighted to present this exceptional semi-detached bungalow, enviably positioned in the highly sought-after village of High Wych. Offering over 1,700 sq. ft. of versatile and well-planned accommodation, this impressive home is perfectly suited to families, downsizers, or anyone seeking generous single-storey living.

The property opens with a bright and welcoming entrance hall, leading to a spacious sitting room and a separate open-plan kitchen/dining room. Centrally located within the home, the well-proportioned kitchen provides excellent workspace and enjoys direct access to the south-facing rear garden.

There are four double bedrooms in total, including a superb primary bedroom and three further well-sized doubles. These are served by a family bathroom and an additional separate WC. The layout offers outstanding flexibility for families, guests, or those requiring dedicated space for home working.

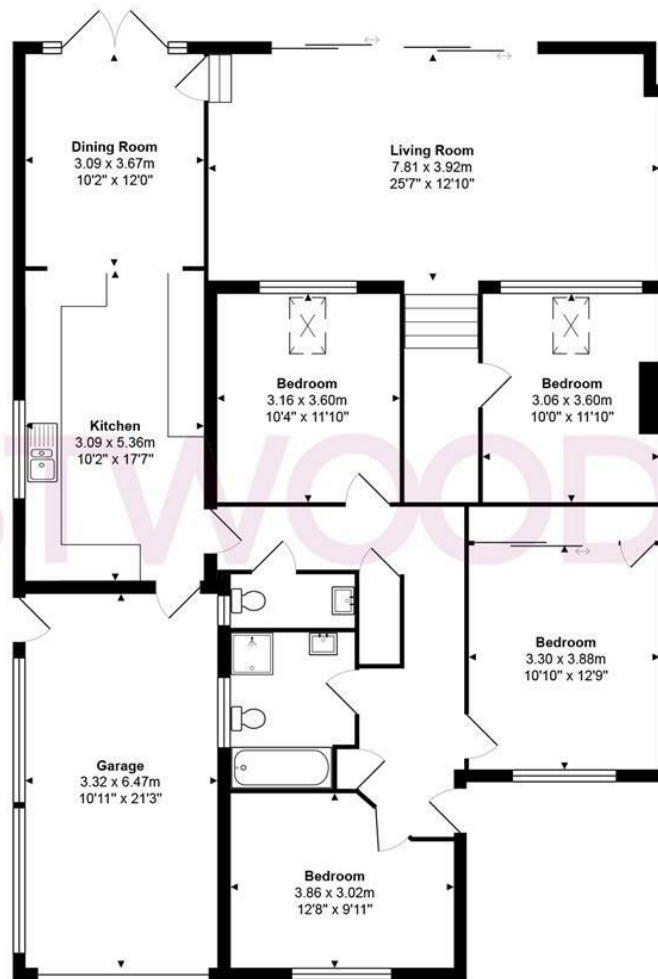
Externally, the bungalow features a beautifully private south-facing rear garden with a generous patio area—ideal for outdoor dining and relaxation. To the front, there is a lawned garden, a private driveway leading to a large integral garage, and further hard standing providing parking for up to three additional vehicles.

Occupying a substantial plot on a well-maintained and peaceful private road, the property also benefits from a large loft space offering excellent potential for conversion—creating the opportunity for up to two further bedrooms and an additional bathroom, subject to planning permission. An internal viewing is highly recommended!



 WESTWOODLEBER

 WESTWOODLEBER
LET US GUIDE YOU HOME



Total Area: approx. 161.2 m² ... 1735 ft²

THE FLOORPLAN IS FOR ILLUSTRATIVE PURPOSES ONLY AND IS NOT TO SCALE.
Measurements and features are approximate and may differ from the actual property. Verify all details independently; no liability is accepted for errors or omissions.

Property marketing provided by www.fotomarketing.co.uk











