





Park View, Hoddesdon, EN11 8PY

Westwood Leber are delighted to bring to the market this spacious and well-presented three-bedroom apartment, perfectly positioned within the highly sought-after Barclay Court development in Hoddesdon. This rarely available property offers generous accommodation throughout and represents an excellent opportunity for first-time buyers, downsizers, or investors.

Set on one level and measuring approximately 739 sq. ft, the apartment features a bright and airy lounge/diner offering ample space for both relaxation and entertaining. The separate fitted kitchen is conveniently positioned just off the main living area, providing good worktop space and storage.

The property includes three well-proportioned bedrooms, offering flexibility for family living, guest accommodation, or home office use. A well-maintained bathroom and a separate WC serve the bedrooms and complete the internal layout.

Externally, Barclay Court benefits from beautifully kept communal grounds, resident parking, and secure entry systems, all providing a comfortable and safe living environment. The development sits within easy reach of Hoddesdon town centre, where an array of shops, cafés, restaurants and leisure facilities are on offer.

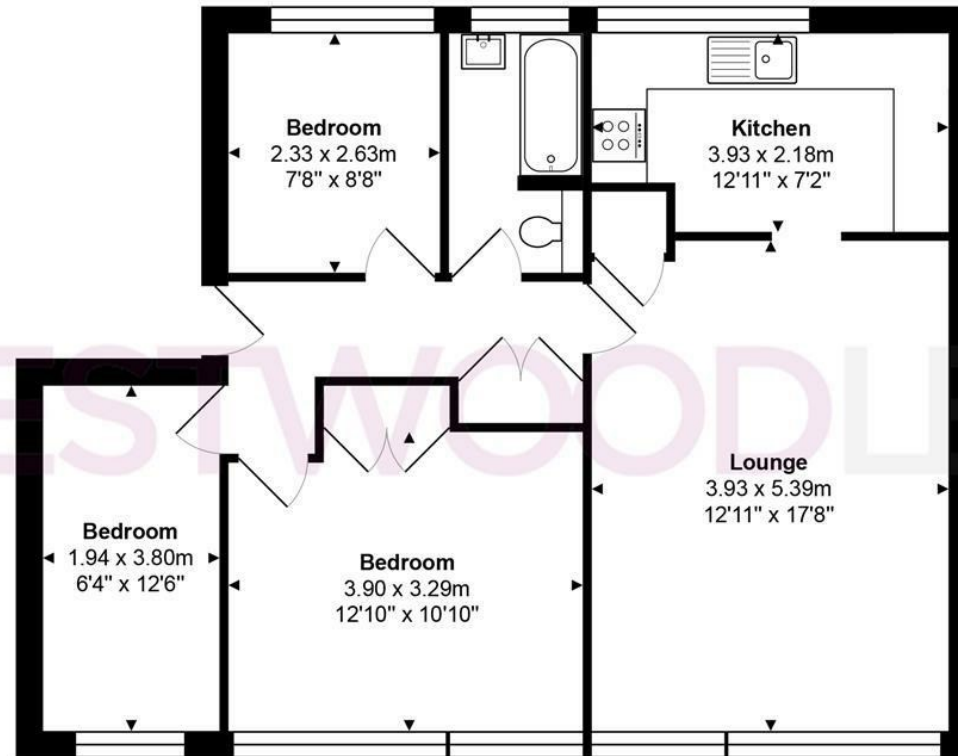
For commuters, both Rye House and Broxbourne mainline stations are close by, providing excellent links into London Liverpool Street. The location is also well served by local schools, parks, and bus routes, making it an ideal choice for a variety of buyers.

An early viewing is highly recommended to appreciate the generous accommodation and superb location this property has to offer.



WESTWOODLEBER

WESTWOODLEBER
LET US GUIDE YOU HOME



Total Area: approx. 68.6 m² ... 739 ft²

THE FLOORPLAN IS FOR ILLUSTRATIVE PURPOSES ONLY AND IS NOT TO SCALE.

Measurements and features are approximate and may differ from the actual property. Verify all details independently; no liability is accepted for errors or omissions.

Property marketing provided by www.fotomarketing.co.uk



