



WILWESTWOODLEBER

WILWESTWOODLEBER
LET US GUIDE YOU HOME

Mead Lane, Hertford, SG13 7GA
£325,000



Mead Lane, Hertford, SG13 7GA

Westwood Leber are delighted to bring to the market this chain-free well-presented two-bedroom apartment, ideally located within this popular riverside development in Hertford.

This stylish home offers bright and spacious accommodation throughout, featuring a welcoming entrance hallway, an impressive open-plan living room and kitchen with modern fittings, and two well-proportioned bedrooms. The property is further complemented by a contemporary bathroom, creating a superb layout for first-time buyers, professionals, or investors alike. Given the stylish interior, the property is being offered for sale fully furnished.

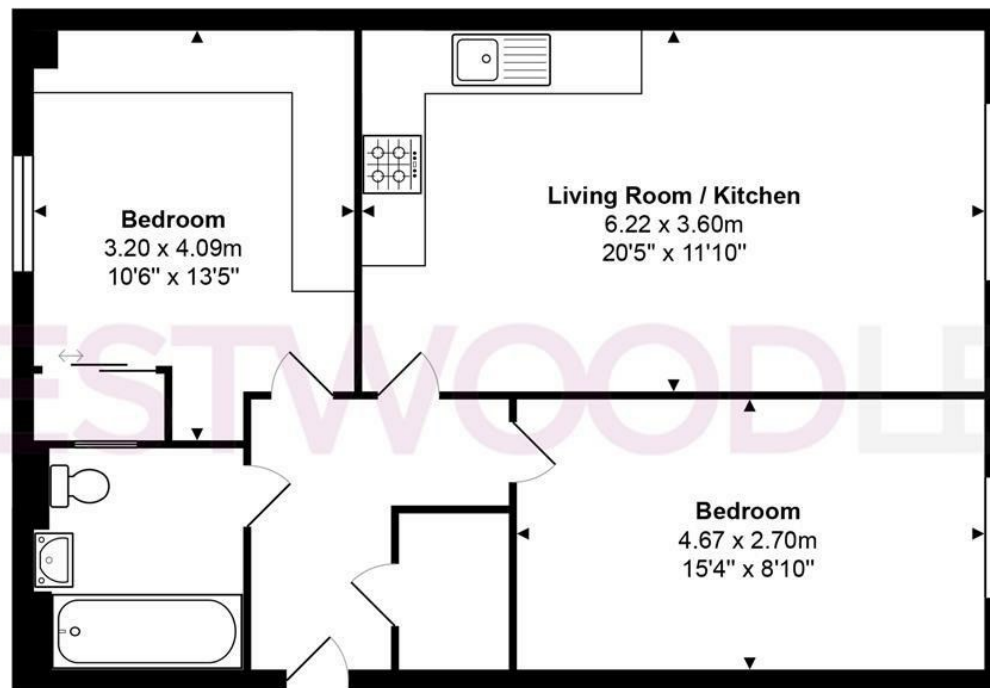
Externally, the apartment benefits from allocated parking, providing excellent convenience in this sought-after location.

Positioned within easy reach of Hertford town centre, local shops, restaurants, and leisure facilities, as well as both Hertford East and Hertford North stations with direct links into London, this property presents an ideal blend of comfort and connectivity. An internal viewing is highly recommended!



W WESTWOODLEBER

W WESTWOODLEBER
LET US GUIDE YOU HOME



Total Area: approx. 60.3 m² ... 649 ft²

THE FLOORPLAN IS FOR ILLUSTRATIVE PURPOSES ONLY AND IS NOT TO SCALE.
Measurements and features are approximate and may differ from the actual property. Verify all details independently; no liability is accepted for errors or omissions.

Property marketing provided by www.fotomarketing.co.uk







