





Beaumont Road, Broxbourne, EN10 7QJ

Westwood Leber are delighted to bring to the market this magnificent six-bedroom Grade II listed terraced home, nestled in a highly sought-after semi-rural position, offering unrivalled character, panoramic views, and the rare inclusion of a private 2.99-acre field.

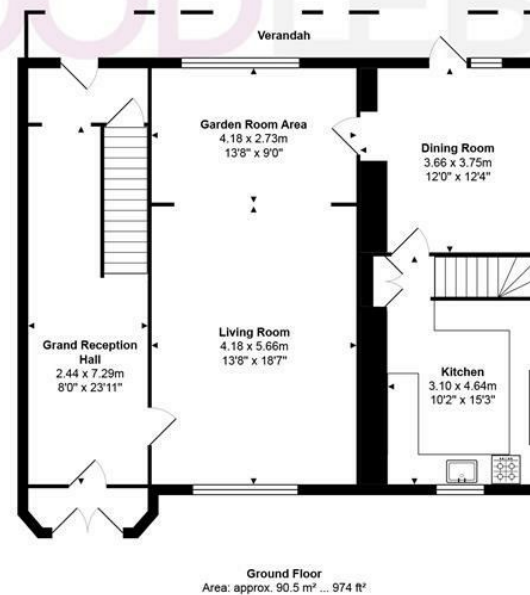
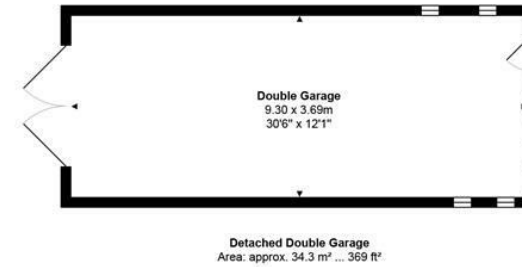
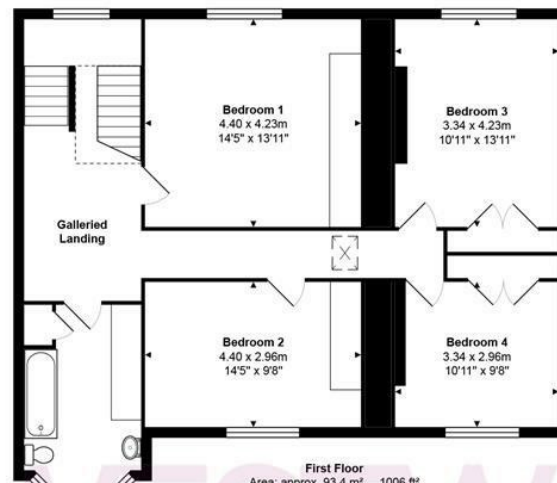
This historic residence forms part of an exclusive manor estate and offers beautifully appointed accommodation arranged over three expansive floors. The property boasts an elegant balance of original period features with sympathetic modern upgrades, showcasing high ceilings, original sash windows, ornate cornicing, and a stunning galleried landing.

Set behind private grounds, the home features six well-proportioned bedrooms, including a versatile layout on the lower ground floor with potential for guest accommodation or multi-generational living. The multiple reception rooms are filled with natural light and include a grand central hallway, two spacious lounges, and a formal dining room. A modern, fully fitted kitchen offers bespoke cabinetry, wooden countertops, and garden views.

Throughout the property, you'll find beautiful original features, including wood panelling, carved fireplaces, and traditional staircases, all thoughtfully preserved. A detached double garage provides ample parking and additional storage, while the spacious landscaped gardens lead seamlessly into an expansive 2.99-acre private field.



WESTWOODLEBER



Total Area: approx. 299.6 m² ... 3225 ft² (excluding verandah)

THE FLOORPLAN IS FOR ILLUSTRATIVE PURPOSES ONLY AND IS NOT TO SCALE.
Measurements and features are approximate and may differ from the actual property. Verify all details independently; no liability is accepted for errors or omissions.

Property marketing provided by www.fotomarketing.co.uk











W^L WESTWOODLEBER

W^L WESTWOODLEBER
LET US GUIDE YOU HOME