



WESTWOODLEBER

**WESTWOODLEBER**  
LET US GUIDE YOU HOME

Burn Side, Hoddesdon, EN11 8PG  
Offers in excess of £500,000





## Burn Side, Hoddesdon, EN11 8PG

Westwood Leber are delighted to bring to the market this immaculately presented four bedroom end of terrace townhouse in the heart of Hoddesdon. This property offers fantastic living accommodation comprising of a large kitchen/diner, downstairs w/c, a separate living room, four double bedrooms and two family bathrooms. Further benefits include a drive for two cars and a well sized rear garden. An internal viewing is highly recommended.



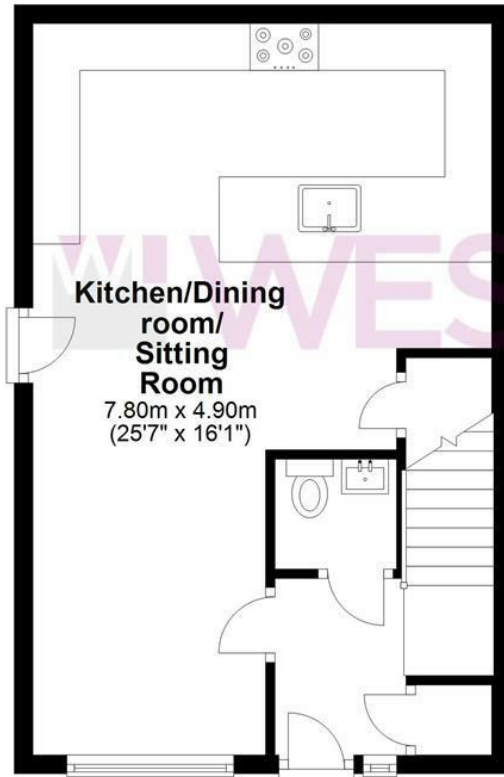


**WESTWOODLEBER**



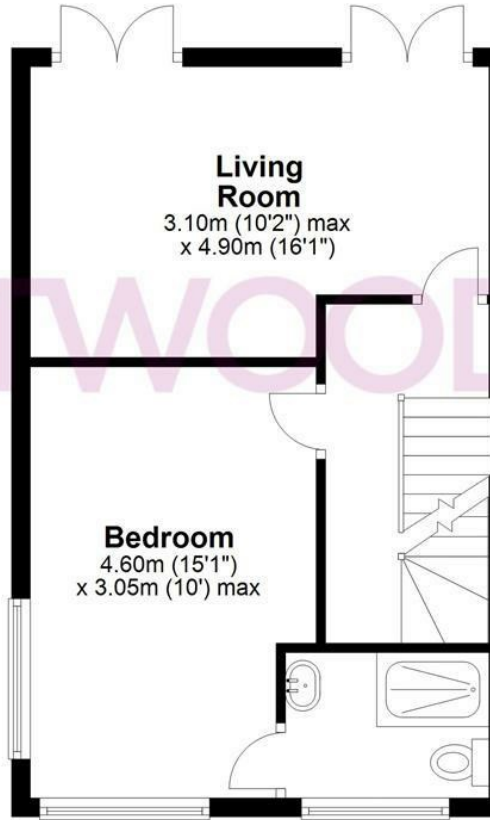
### Ground Floor

Approx. 38.2 sq. metres (411.3 sq. feet)



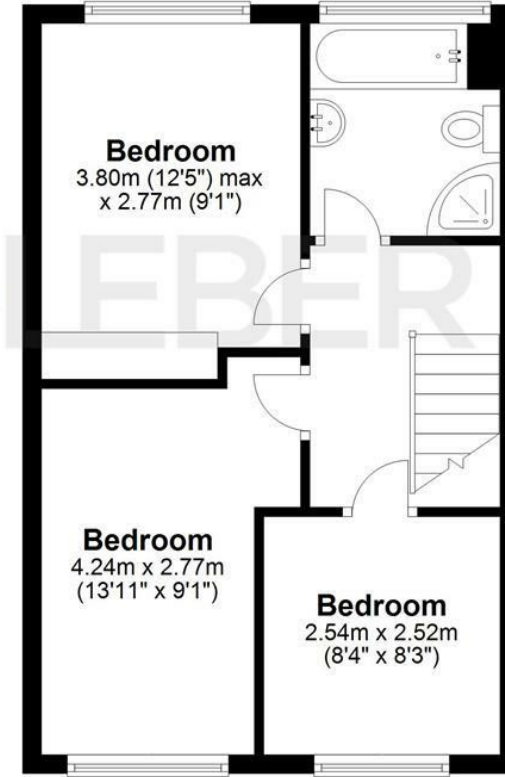
### First Floor

Approx. 38.2 sq. metres (411.3 sq. feet)



### Second Floor

Approx. 38.2 sq. metres (411.3 sq. feet)



Total area: approx. 114.6 sq. metres (1234.0 sq. feet)

FOR ILLUSTRATIVE PURPOSES ONLY. NOT TO SCALE. Whilst every attempt had been made to ensure the accuracy of the floor plan shown, all measurements, positioning, fixtures, features, fittings and any other data shown are an approximate interpretation for illustrative purposes only and are not to scale. No responsibility is taken for any error, omission, miss-statement or use of data shown. Property marketing provided by Westwood Leber. Plan produced using PlanUp.

























**WESTWOODLEBER**