







## Church Street, Ware, SG12 9EN

Westwood Leber are delighted to present this impeccably maintained two-bedroom second-floor apartment, ideally situated in an exclusive development at the heart of Ware.

Boasting spacious living accommodation throughout, this stunning property features two generously sized double bedrooms, an en-suite shower room to the master, a luxurious family bathroom, and a beautifully appointed open-plan kitchen/living area. Originally an ex-show home, the apartment was built in 2018 and offers a modern, stylish living space.

Additional benefits include allocated parking and breathtaking views of the picturesque Church Street.

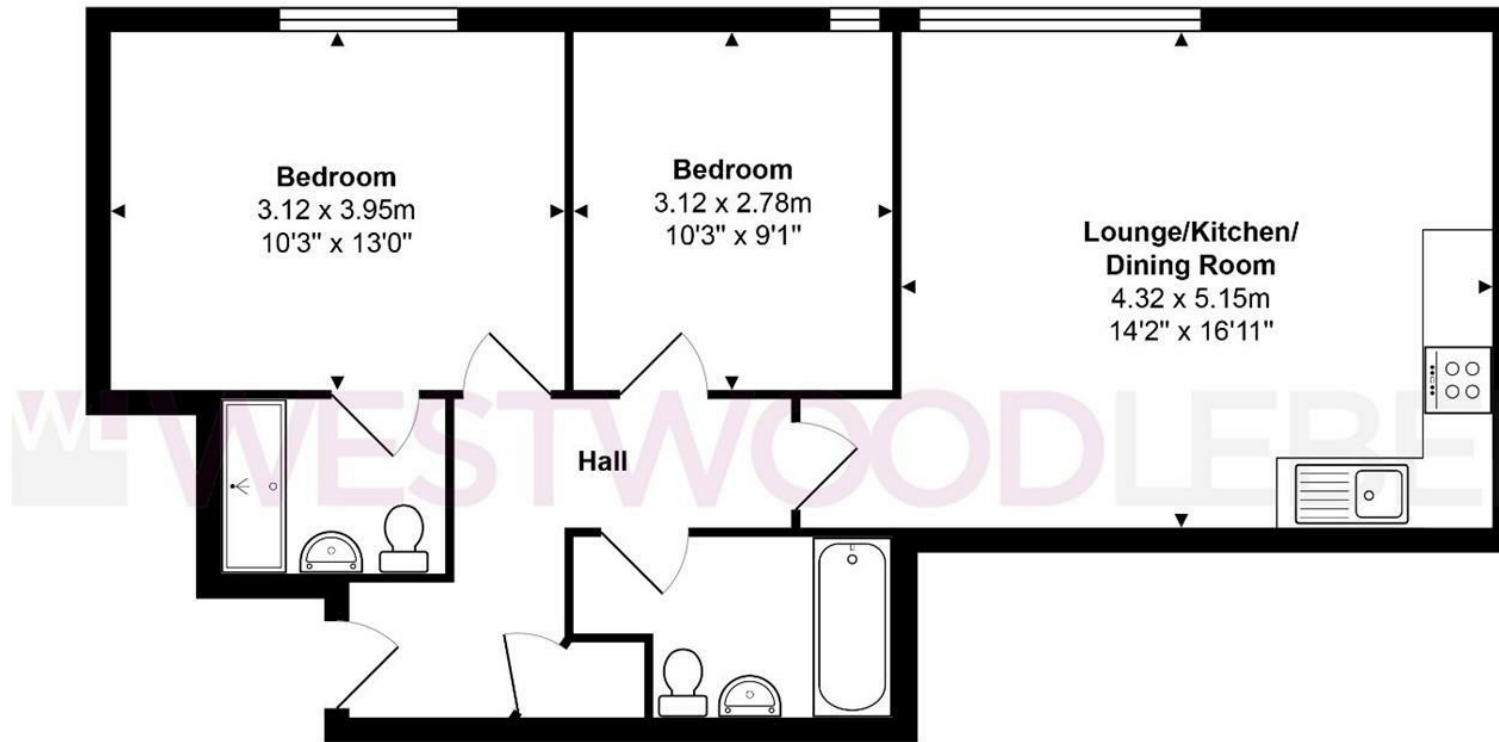
An internal viewing is highly recommended to fully appreciate this exceptional apartment.



**WESTWOODLEBER**

**WESTWOODLEBER**  
LET US GUIDE YOU HOME





### Apartment

Total Area: approx. 59.2 m<sup>2</sup> ... 637 ft<sup>2</sup>

THE FLOORPLAN IS FOR ILLUSTRATIVE PURPOSES ONLY AND IS NOT TO SCALE.  
Measurements and features are approximate and may differ from the actual property. Verify all details independently; no liability is accepted for errors or omissions.

Property marketing provided by [www.fotomarketing.co.uk](http://www.fotomarketing.co.uk)















