



£375,000



North Road, Hoddesdon, EN11 8JQ

Westwood Leber are pleased to present this beautifully refurbished two double bedroom Victorian home, ideally situated within walking distance of Rye House Rail Station and Hoddesdon Town Centre.

This charming property combines contemporary interiors with an abundance of period character. The home features a recently refitted kitchen, a stylishly reconfigured living room, and two generously sized double bedrooms—the master benefiting from a stunning en-suite. The main three-piece bathroom suite is conveniently located on the first floor.

Externally, the property offers a low-maintenance rear garden, perfect for relaxing or entertaining.

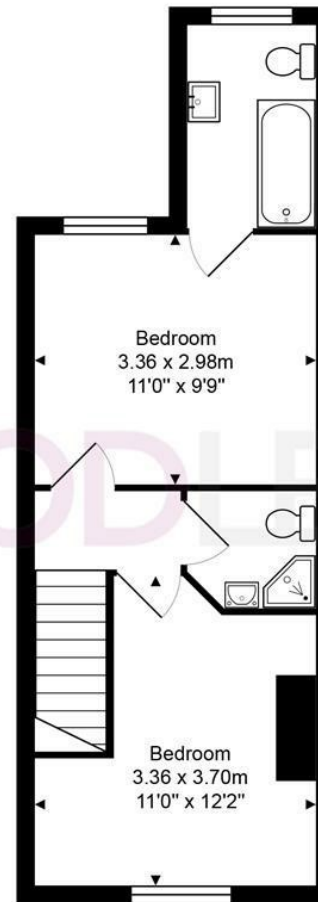
An internal viewing is highly recommended to fully appreciate all this exceptional home has to offer.



WESTWOODLEBER



Ground Floor

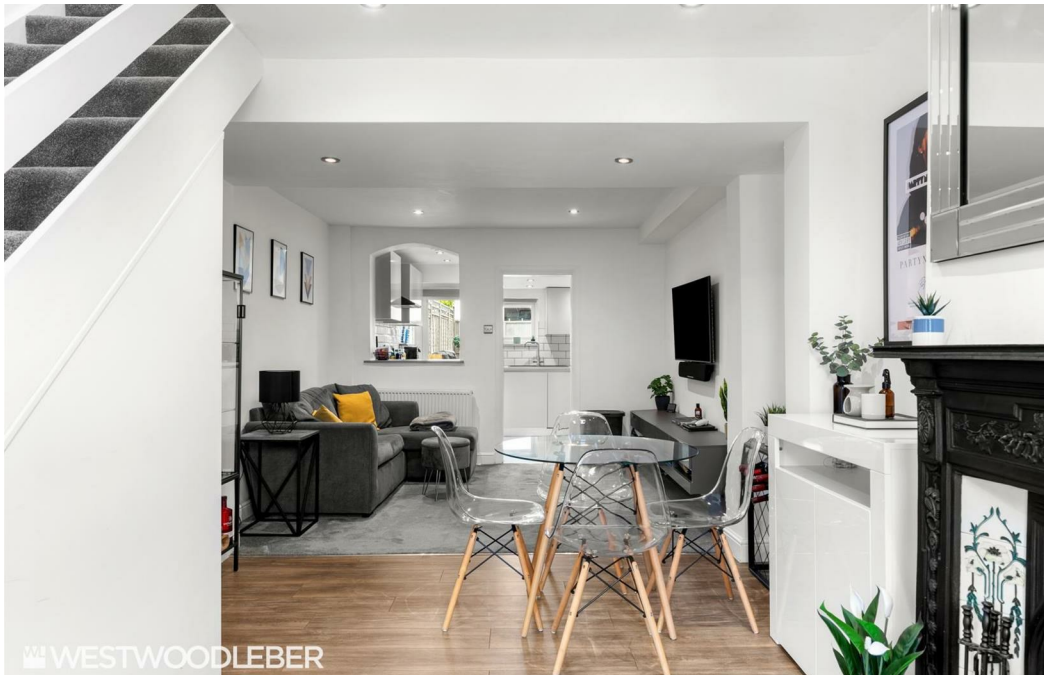


First Floor

Total Area: approx. 64.0 m² ... 688 ft²

THE FLOORPLAN IS FOR ILLUSTRATIVE PURPOSES ONLY AND IS NOT TO SCALE.
Measurements and features are approximate and may differ from the actual property. Verify all details independently; no liability is accepted for errors or omissions.

Property marketing provided by www.fotomarketing.co.uk







WESTWOODLEBER



WESTWOODLEBER



WESTWOODLEBER



WESTWOODLEBER



