





Cambridge Street, Thundridge, Ware, SG12 0SZ

This striking detached Victorian-style lodge delivers generous, character-rich living spaces that have been extensively renovated, extended, and enhanced in recent years to create a superb family residence. Nestled at the gateway of the renowned Hanbury Manor Golf and Country Club, the home sits on an expansive, mature plot measuring to a full acre.

A spacious entrance hall welcomes you in, showcasing stylish engineered oak flooring and a staircase rising to the upper floor. From here, three distinct reception rooms can be accessed. To the front, a cosy lounge features a charming bay window and a classic fireplace. Another front-facing room, currently used as a study. At the far end of the hallway, a bright and airy sitting room leading directly to the rear garden.

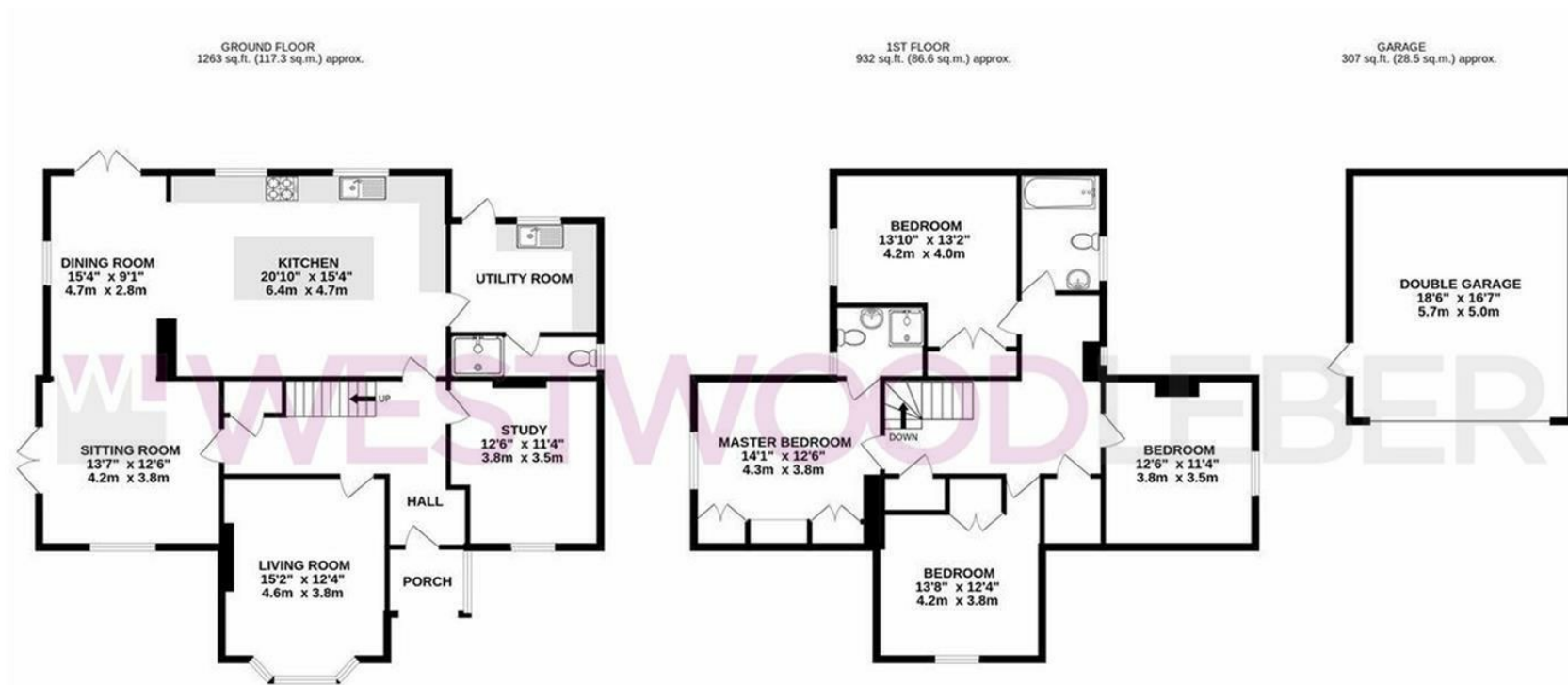
The oak flooring continues seamlessly into the standout kitchen and dining space. This impressive room features a modern wood-burning stove in the dining area and an expansive kitchen equipped with granite-style worktops and a central island with breakfast seating. Adjacent is a well-equipped utility room with outdoor access, along with a stylish downstairs shower room and WC.

Upstairs, the property offers four generously proportioned double bedrooms. The principal bedroom is enhanced by an en suite shower room, while a contemporary family bathroom serves the remaining rooms from a spacious landing.



WL WESTWOODLEBER

WL WESTWOODLEBER
LET US GUIDE YOU HOME



Total area: approx. 232.7 sq. metres (2505.2 sq. feet)

THE FLOORPLAN IS FOR ILLUSTRATIVE PURPOSES ONLY AND IS NOT TO SCALE. Measurements and features are approximate and may differ from the actual property. Verify all details independently; no liability is accepted for errors or omissions.

Property marketing provided by www.fotomarketing.co.uk























