





Church Street, Buntingford, SG9 9AS

Westwood Leber are delighted to bring to the market this immaculately presented Victorian cottage, set over three floors on a desirable road just off the popular Buntingford High Street.

Recently updated, this charming home features an inviting sitting room with a brick fireplace and a working log burner. The refitted kitchen showcases solid teak woodwork surfaces. The ground floor also includes a cloakroom and an extended dining room that opens onto the landscaped rear garden.

On the first floor, you'll find two spacious double bedrooms and a luxurious four-piece bathroom, complete with a separate shower. The principal bedroom is situated on the top floor and benefits from built-in wardrobes and additional storage space.

The rear garden has been fully landscaped for low maintenance, featuring a decking area. At the back of the garden, there is an outbuilding that can be used as an study or gym, equipped with power and lighting.

An internal viewing is highly recommended to fully appreciate this lovely home.



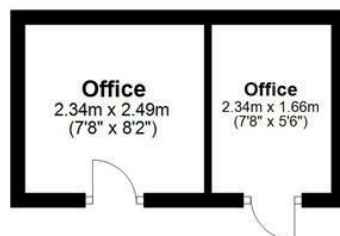
Ground Floor

Approx. 38.5 sq. metres (414.7 sq. feet)



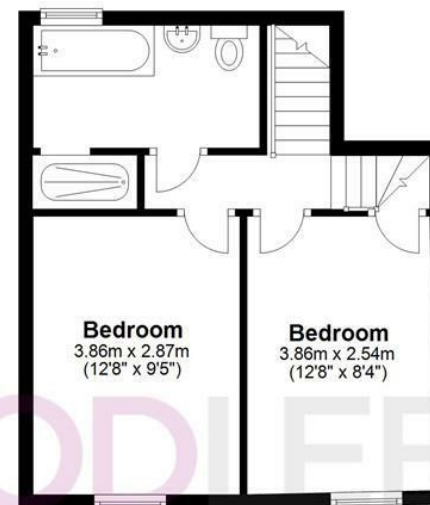
Outbuilding

Approx. 9.9 sq. metres (107.0 sq. feet)



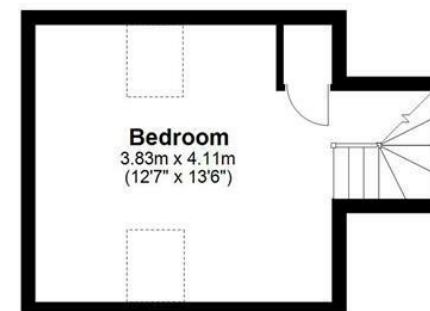
First Floor

Approx. 33.4 sq. metres (359.4 sq. feet)



Second Floor

Approx. 18.6 sq. metres (200.7 sq. feet)



Total area: approx. 100.5 sq. metres (1081.8 sq. feet)

THE FLOORPLAN IS FOR ILLUSTRATIVE PURPOSES ONLY AND IS NOT TO SCALE. Measurements and features are approximate and may differ from the actual property. Verify all details independently; no liability is accepted for errors or omissions.

[Property marketing provided by www.fotomarketing.co.uk](http://www.fotomarketing.co.uk)







WESTWOODLEBER



WESTWOODLEBER



WESTWOODLEBER



WESTWOODLEBER





