





Taverners Way, Hoddesdon, EN11 8UG

Westwood Leber are delighted to present this exceptional and generously proportioned two-bedroom apartment, ideally positioned in the heart of Hoddesdon Town Centre.

Located within a highly sought-after private gated development, this superb property offers modern and well-appointed accommodation throughout. The spacious open-plan living area features a stylish kitchen with integrated appliances and a Juliet balcony that brings in natural light and a sense of openness.

The principal bedroom benefits from a sleek en suite shower room, while a recently refitted main bathroom serves the second bedroom. Additional features include video entryphone security and allocated off-street parking, providing both convenience and peace of mind.

This fantastic apartment offers the perfect combination of space, style, and location—ideal for professionals, first-time buyers, or investors alike.

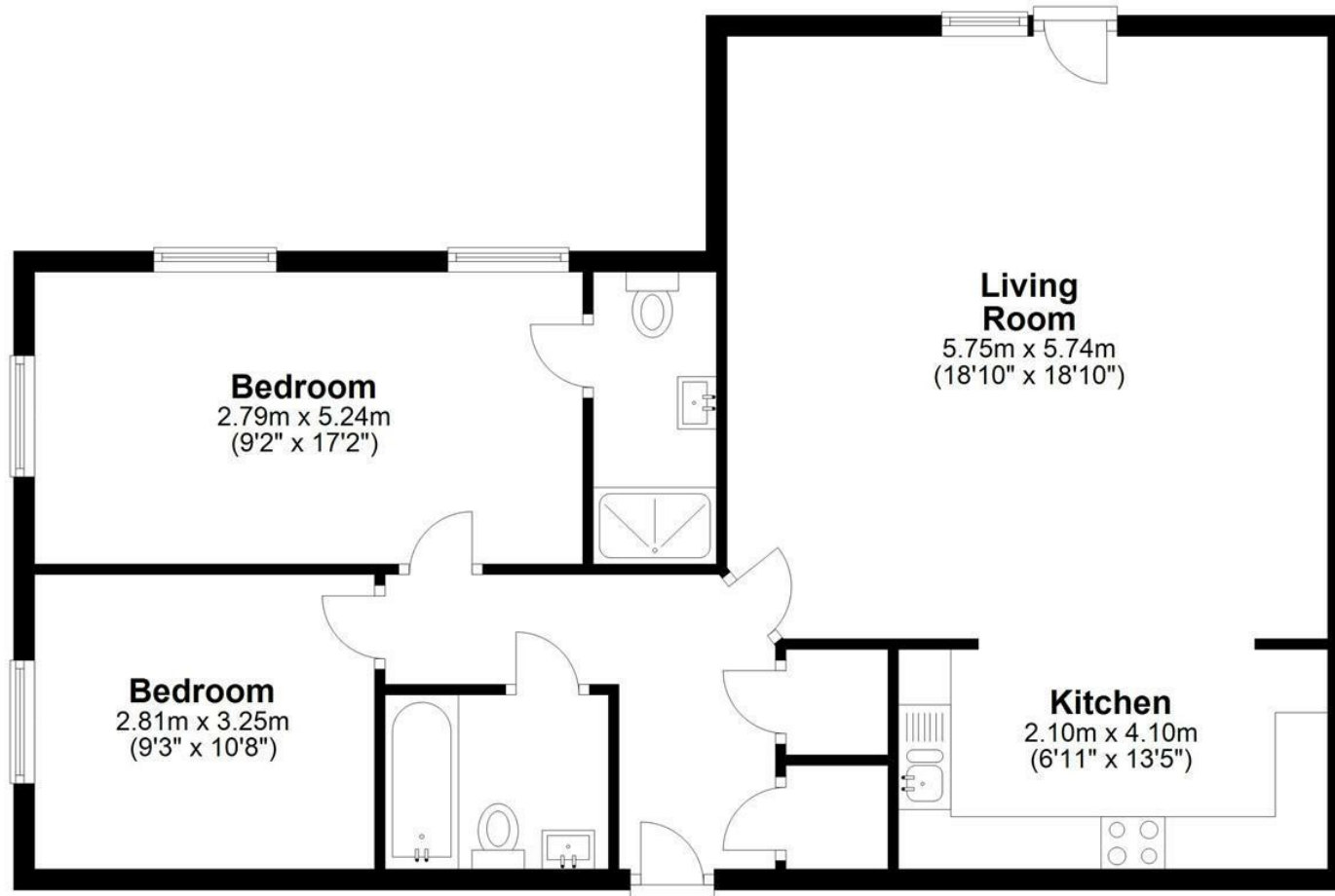


WL WESTWOODLEBER

WL WESTWOODLEBER
LET US GUIDE YOU HOME

Ground Floor

Approx. 83.3 sq. metres (896.4 sq. feet)



Total area: approx. 83.3 sq. metres (896.4 sq. feet)

FOR ILLUSTRATIVE PURPOSES ONLY. NOT TO SCALE. Whilst every attempt had been made to ensure the accuracy of the floor plan shown, all measurements, positioning, fixtures, features, fittings and any other data shown are an approximate interpretation for illustrative purposes only and are not to scale. No responsibility is taken for any error, omission, misstatement or use of data shown. Property marketing provided by Foto Ltd.

Plan produced using PlanUp.







