







## Ranworth Avenue, Hoddesdon, EN11 9NS

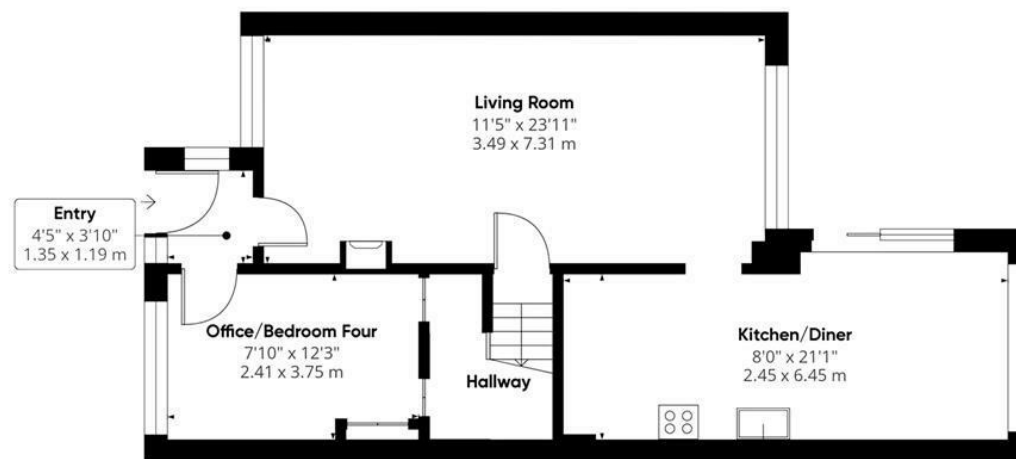
Westwood Leber is thrilled to present this beautifully appointed 3-bedroom semi-detached family home, located in the highly sought-after Hundred Acre development. This property boasts a spacious lounge/diner and a stylish kitchen/breakfast room, complete with windows and doors that open to the rear garden, filling the space with natural light. Additional highlights include off-street parking for multiple vehicles and a low-maintenance, south-facing rear garden. We highly recommend scheduling an internal viewing!





**WESTWOODLEBER**

**WESTWOODLEBER**  
LET US GUIDE YOU HOME



Total area: approx. 99.1 sq. metres (1066.9 sq. feet)

THE FLOORPLAN IS FOR ILLUSTRATIVE PURPOSES ONLY AND IS NOT TO SCALE. Measurements and features are approximate and may differ from the actual property. Verify all details independently; no liability is accepted for errors or omissions.

Property marketing provided by [www.fotomarketing.co.uk](http://www.fotomarketing.co.uk)





















**WESTWOODLEBER**